

# MetAP-2 (D-20): sc-49451

## BACKGROUND

Methionine aminopeptidases (MetAP), also designated peptidase M proteins, are members of the M24 family of proteins. Both MetAP-1 and MetAP-2 release N-terminal amino acids, usually methionine, from nascent peptides and arylamines. Eukaryotes contain both MetAP-1 and MetAP-2, whereas prokaryotes possess only the MetAP-1 enzyme. MetAP-1 and MetAP-2 control cell proliferation in mammalian cells. MetAP-2 is highly conserved between human and *Saccharomyces cerevisiae*. Neurofibromin (NF1) regulates MetAP-2 and increased expression of MetAP-2 correlates with several forms of cancer. Inhibitors of MetAP-2 are potential targets in cancer therapeutics, particularly in NF1-associated tumor proliferation. Chemotherapeutic drugs such as ovalicin and fumagillin bind to the active site of and inhibit MetAP-2.

## CHROMOSOMAL LOCATION

Genetic locus: METAP2 (human) mapping to 12q22; Metap2 (mouse) mapping to 10 C2.

## SOURCE

MetAP-2 (D-20) is an affinity purified goat polyclonal antibody raised against a peptide mapping within an internal region of MetAP-2 of human origin.

## PRODUCT

Each vial contains 200 µg IgG in 1.0 ml of PBS with < 0.1% sodium azide and 0.1% gelatin.

Blocking peptide available for competition studies, sc-49451 P, (100 µg peptide in 0.5 ml PBS containing < 0.1% sodium azide and 0.2% BSA).

## STORAGE

Store at 4° C, **\*\*DO NOT FREEZE\*\***. Stable for one year from the date of shipment. Non-hazardous. No MSDS required.

## APPLICATIONS

MetAP-2 (D-20) is recommended for detection of MetAP-2 of mouse, rat and human origin by Western Blotting (starting dilution 1:200, dilution range 1:100-1:1000), immunoprecipitation [1-2 µg per 100-500 µg of total protein (1 ml of cell lysate)], immunofluorescence (starting dilution 1:50, dilution range 1:50-1:500) and solid phase ELISA (starting dilution 1:30, dilution range 1:30-1:3000).

MetAP-2 (D-20) is also recommended for detection of MetAP-2 in additional species, including equine, canine, bovine, porcine and avian.

Suitable for use as control antibody for MetAP-2 siRNA (h): sc-61024, MetAP-2 siRNA (m): sc-61025, MetAP-2 shRNA Plasmid (h): sc-61024-SH, MetAP-2 shRNA Plasmid (m): sc-61025-SH, MetAP-2 shRNA (h) Lentiviral Particles: sc-61024-V and MetAP-2 shRNA (m) Lentiviral Particles: sc-61025-V.

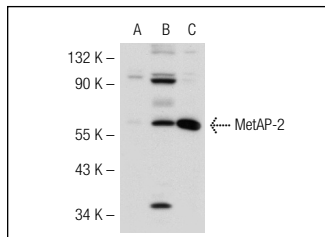
Molecular Weight of MetAP-2: 67 kDa.

Positive Controls: MetAP-2 (h): 293T Lysate: sc-113324, MetAP-2 (m): 293T Lysate: sc-121610 or HeLa whole cell lysate: sc-2200.

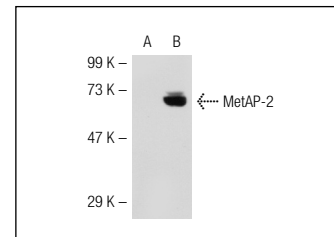
## RECOMMENDED SECONDARY REAGENTS

To ensure optimal results, the following support (secondary) reagents are recommended: 1) Western Blotting: use donkey anti-goat IgG-HRP: sc-2020 (dilution range: 1:2000-1:100,000) or Cruz Marker™ compatible donkey anti-goat IgG-HRP: sc-2033 (dilution range: 1:2000-1:5000), Cruz Marker™ Molecular Weight Standards: sc-2035, TBS Blotto A Blocking Reagent: sc-2333 and Western Blotting Luminol Reagent: sc-2048. 2) Immunoprecipitation: use Protein A/G PLUS-Agarose: sc-2003 (0.5 ml agarose/2.0 ml). 3) Immunofluorescence: use donkey anti-goat IgG-FITC: sc-2024 (dilution range: 1:100-1:400) or donkey anti-goat IgG-TR: sc-2783 (dilution range: 1:100-1:400) with UltraCruz™ Mounting Medium: sc-24941.

## DATA



MetAP-2 (D-20): sc-49451. Western blot analysis of MetAP-2 expression in non-transfected 293T: sc-117752 (A), human MetAP-2 transfected 293T: sc-113324 (B) and HeLa (C) whole cell lysates.



MetAP-2 (D-20): sc-49451. Western blot analysis of MetAP-2 expression in non-transfected 293T: sc-117752 (A) and mouse MetAP-2 transfected: sc-121610 (B) 293T whole cell lysates.

## RESEARCH USE

For research use only, not for use in diagnostic procedures.

## PROTOCOLS

See our web site at [www.scbt.com](http://www.scbt.com) or our catalog for detailed protocols and support products.



**MONOS**  
Satisfaction  
Guaranteed

Try **MetAP-2 (F-7): sc-365637** or **MetAP-2 (D-7): sc-166773**, our highly recommended monoclonal alternatives to MetAP-2 (D-20).