

XTRP3 (Y-12): sc-49580

BACKGROUND

The solute carrier (SLC6) family, also known as the neurotransmitter transporter family, is one of the largest transporter families in the human genome comprising 20 members. The sodium- and chloride-dependent transporter XTRP3, also designated neurotransmitter transporter rB21A homolog is expressed in the medullary layer of the brain, as well as in the kidney, lung, and small intestinal tissues. XTRP3 is a 616-amino acid membrane protein that contains 12 putative transmembrane domains and several glycosylation sites that may play a role in regulating cerebrospinal fluid (CSF) levels of its substrate. XTRP3 may be a candidate for transporter-based therapeutic agents aiding in neurological and psychiatric disorders.

REFERENCES

1. Smith, K.E., et al. 1995. Molecular cloning of an orphan transporter. A new member of the neurotransmitter transporter family. *FEBS Lett.* 357: 86-92.
2. Kiss, H., et al. 2002. Comparative human/murine sequence analysis of the common eliminated region 1 from human 3p21.3. *Mamm. Genome* 13: 646-655.

CHROMOSOMAL LOCATION

Genetic locus: SLC6A20 (human) mapping to 3p21.3; Slc6a20b/Slc6a20a (mouse) mapping to 9 F4.

SOURCE

XTRP3 (Y-12) is an affinity purified goat polyclonal antibody raised against a peptide mapping within an extracellular domain of XTRP3 of human origin.

PRODUCT

Each vial contains 200 µg IgG in 1.0 ml of PBS with < 0.1% sodium azide and 0.1% gelatin.

Blocking peptide available for competition studies, sc-49580 P, (100 µg peptide in 0.5 ml PBS containing < 0.1% sodium azide and 0.2% BSA).

APPLICATIONS

XTRP3 (Y-12) is recommended for detection of XTRP3 of mouse, rat and human origin and XTRP3S1 of mouse origin by Western Blotting (starting dilution 1:200, dilution range 1:100-1:1000), immunoprecipitation [1-2 µg per 100-500 µg of total protein (1 ml of cell lysate)], immunofluorescence (starting dilution 1:50, dilution range 1:50-1:500) and solid phase ELISA (starting dilution 1:30, dilution range 1:30-1:3000).

XTRP3 (Y-12) is also recommended for detection of XTRP3 in additional species, including equine, canine, bovine, porcine and avian.

Suitable for use as control antibody for XTRP3 siRNA (h): sc-61815, XTRP3 siRNA (m): sc-155397, XTRP3 shRNA Plasmid (h): sc-61815-SH, XTRP3 shRNA Plasmid (m): sc-155397-SH, XTRP3 shRNA (h) Lentiviral Particles: sc-61815-V and XTRP3 shRNA (m) Lentiviral Particles: sc-155397-V.

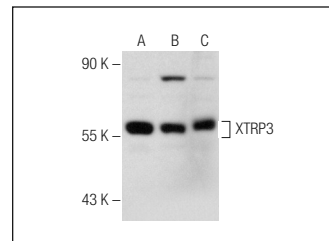
Molecular Weight of XTRP3: 66 kDa.

Positive Controls: CCRF-CEM cell lysate: sc-2225, Daudi cell lysate: sc-2415 or SKBR-3 whole cell lysate.

RECOMMENDED SECONDARY REAGENTS

To ensure optimal results, the following support (secondary) reagents are recommended: 1) Western Blotting: use donkey anti-goat IgG-HRP: sc-2020 (dilution range: 1:2000-1:100,000) or Cruz Marker™ compatible donkey anti-goat IgG-HRP: sc-2033 (dilution range: 1:2000-1:5000), Cruz Marker™ Molecular Weight Standards: sc-2035, TBS Blotto A Blocking Reagent: sc-2333 and Western Blotting Luminol Reagent: sc-2048. 2) Immunoprecipitation: use Protein A/G PLUS-Agarose: sc-2003 (0.5 ml agarose/2.0 ml). 3) Immunofluorescence: use donkey anti-goat IgG-FITC: sc-2024 (dilution range: 1:100-1:400) or donkey anti-goat IgG-TR: sc-2783 (dilution range: 1:100-1:400) with UltraCruz™ Mounting Medium: sc-24941.

DATA



XTRP3 (Y-12): sc-49580. Western blot analysis of XTRP3 expression in CCRF-CEM (A), Daudi (B) and SKBR-3 (C) whole cell lysates.

STORAGE

Store at 4° C, **DO NOT FREEZE** Stable for one year from the date of shipment. Non-hazardous. No MSDS required.

RESEARCH USE

For research use only, not for use in diagnostic procedures.

PROTOCOLS

See our web site at www.scbt.com or our catalog for detailed protocols and support products.

MONOS
Satisfaction
Guaranteed

Try **XTRP3 (C-11): sc-515119**, our highly recommended monoclonal alternative to XTRP3 (Y-12).