

ZP1 (F-16): sc-49581

BACKGROUND

The mammalian zona pellucida is composed of three major glycoproteins, ZP1, ZP2 and ZP3. ZP2 has been implicated as a secondary sperm receptor that binds sperm only after the induction of the sperm acrosome reaction. Both ZP2 and ZP3 are modified by the zona reaction; ZP2 undergoes a proteolytic cleavage and ZP3 loses its ability to induce the acrosome reaction and its sperm receptor activity. During the process of fertilization, the initial interaction between male and female gametes is mediated by a sperm receptor, ZP3, which resides in the extracellular glycoprotein matrix (zona pellucida) surrounding the oocyte. The sperm receptor function of the ZP3 molecule plays a key role in the first step of the fertilization process. Following sperm-oocyte binding, ZP3 triggers the sperm acrosome reaction that releases the protein machinery, enabling a spermatozoon to penetrate the zona pellucida.

REFERENCES

- Liang, L.F., Chamow, S.M. and Dean, J. 1990. Oocyte-specific expression of mouse ZP2: developmental regulation of the zona pellucida genes. *Mol. Cell. Biol.* 10: 1507-1515.
- Dean, J. 1992. Biology of mammalian fertilization: role of the zona pellucida. *J. Clin. Invest.* 89: 1055-1059.
- Kipersztok, S., Osawa, G.A., Liang, L.F., Modi, W.S. and Dean, J. 1995. POM-ZP3, a bipartite transcript derived from human ZP3 and POM121 homologue. *Genomics* 25: 354-359.
- Gupta, S.K., Choudhury, S., Srivastava, N. and Ravi, C. 2003. Zona pellucida glycoproteins based immunocontraceptive vaccines: strategies for development and their applications. *Indian J. Exp. Biol.* 41: 682-693.
- Jazwinska, A. and Affolter, M. 2004. A family of genes encoding zona pellucida (ZP) domain proteins is expressed in various epithelial tissues during *Drosophila* embryogenesis. *Gene Expr. Patterns* 4: 413-421.
- Wassarman, P.M., Jovine, L. and Litscher, E.S. 2004. Mouse zona pellucida genes and glycoproteins. *Cytogenet. Genome Res.* 105: 228-234.
- Wassarman, P.M., Jovine, L., Litscher, E.S., Qi, H. and Williams, Z. 2004. Egg-sperm interactions at fertilization in mammals. *Eur. J. Obstet. Gynecol. Reprod. Biol.* 115: S57-S60.

CHROMOSOMAL LOCATION

Genetic locus: ZP1 (human) mapping to 11q12.2; Zp1 (mouse) mapping to 19 A.

SOURCE

ZP1 (F-16) is an affinity purified goat polyclonal antibody raised against a peptide mapping within an internal region of ZP1 of human origin.

PRODUCT

Each vial contains 200 µg IgG in 1.0 ml of PBS with < 0.1% sodium azide and 0.1% gelatin.

Blocking peptide available for competition studies, sc-49581 P, (100 µg peptide in 0.5 ml PBS containing < 0.1% sodium azide and 0.2% BSA).

APPLICATIONS

ZP1 (F-16) is recommended for detection of ZP1 (zona pellucida glycoprotein 1) of mouse, rat and human origin by Western Blotting (starting dilution 1:200, dilution range 1:100-1:1000), immunoprecipitation [1-2 µg per 100-500 µg of total protein (1 ml of cell lysate)], immunofluorescence (starting dilution 1:50, dilution range 1:50-1:500) and solid phase ELISA (starting dilution 1:30, dilution range 1:30-1:3000).

ZP1 (F-16) is also recommended for detection of ZP1 (zona pellucida glycoprotein 1) in additional species, including equine.

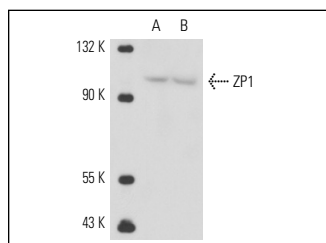
Suitable for use as control antibody for ZP1 siRNA (h): sc-61831, ZP1 siRNA (m): sc-41134, ZP1 shRNA Plasmid (h): sc-61831-SH, ZP1 shRNA Plasmid (m): sc-41134-SH, ZP1 shRNA (h) Lentiviral Particles: sc-61831-V and ZP1 shRNA (m) Lentiviral Particles: sc-41134-V.

Molecular Weight of glycosylated ZP1: 132 kDa.

Molecular Weight of ZP1 deglycosylated: 63 kDa.

Positive Controls: KNRK whole cell lysate: sc-2214, 3611-RF whole cell lysate: sc-2215 or mouse ovary extract: sc-2404.

DATA



ZP1 (F-16): sc-49581. Western blot analysis of deglycosylated ZP1 expression in KNRK (A) and 3611-RF (B) whole cell lysates.

STORAGE

Store at 4° C, ****DO NOT FREEZE****. Stable for one year from the date of shipment. Non-hazardous. No MSDS required.

RESEARCH USE

For research use only, not for use in diagnostic procedures.

PROTOCOLS

See our web site at www.scbt.com or our catalog for detailed protocols and support products.



Try **ZP1 (D-4): sc-365435** or **ZP1 (M1.4): sc-32751**, our highly recommended monoclonal alternatives to ZP1 (F-16).