

URE-B1 (Y-19): sc-49768

BACKGROUND

The ubiquitin (Ub) pathway involves three sequential enzymatic steps that facilitate the conjugation of Ub and Ub-like molecules to specific protein substrates. The first step requires the ATP-dependent activation of the Ub C-terminus and the assembly of multi-Ub chains by the Ub-activating enzyme known as the E1 component. The Ub chain is then conjugated to the Ub-conjugating enzyme (E2) to generate an intermediate Ub-E2 complex. The Ub-ligase (E3) then catalyzes the transfer of Ub from E2 to the appropriate protein substrate. A wide range of enzymes facilitate in the proteolytic Ub pathway, including upstream regulatory element binding protein 1 (URE-B1), which functions as a suppressor element in the regulation of dynorphin and macrophage inflammatory protein 1 β gene transcription. URE-B1 is also a negative regulator of p53 during the colorectal carcinoma progression through the ubiquitination pathway mediated by its HECT domain.

REFERENCES

- Gu, J., Ren, K., Dubner, R. and Iadarola, M.J. 1994. Cloning of a DNA binding protein that is a tyrosine kinase substrate and recognizes an upstream initiator-like sequence in the promoter of the preprodynorphin gene. *Brain Res. Mol. Brain Res.* 24: 77-88.
- Gu, J., Dubner, R., Fornace, A.J. and Iadarola, M.J. 1995. URE-B1, a tyrosine phosphorylated nuclear protein, inhibits p53 transactivation. *Oncogene* 11: 2175-2178.
- Gu, J., Irving, S.G. and Iadarola, M.J. 1997. URE, an initiator (Inr)-like site, suppresses the promoter of the rat dynorphin gene. *Biochem. Biophys. Res. Commun.* 231: 172-177.
- Online Mendelian Inheritance in Man, OMIM™. 2002. Johns Hopkins University, Baltimore, MD. MIM Number: 191170. World Wide Web URL: <http://www.ncbi.nlm.nih.gov/omim/>
- Solomon, S.S., Buss, N., Shull, J., Monnier, S., Majumdar, G., Wu, J. and Gerling, I.C. 2005. Proteome of H-411E (liver) cells exposed to Insulin and tumor necrosis factor α : analysis of proteins involved in insulin resistance. *J. Lab. Clin. Med.* 145: 275-283.

CHROMOSOMAL LOCATION

Genetic locus: HUWE1 (human) mapping to Xp11.22; Huwe1 (mouse) mapping to X F3.

SOURCE

URE-B1 (Y-19) is an affinity purified goat polyclonal antibody raised against a peptide mapping near the N-terminus of URE-B1 of human origin.

PRODUCT

Each vial contains 200 μ g IgG in 1.0 ml of PBS with < 0.1% sodium azide and 0.1% gelatin.

Blocking peptide available for competition studies, sc-49768 P, (100 μ g peptide in 0.5 ml PBS containing < 0.1% sodium azide and 0.2% BSA).

APPLICATIONS

URE-B1 (Y-19) is recommended for detection of isoforms 1-3 of URE-B1 of mouse, rat and human origin by Western Blotting (starting dilution 1:200, dilution range 1:100-1:1000), immunoprecipitation [1-2 μ g per 100-500 μ g of total protein (1 ml of cell lysate)], immunofluorescence (starting dilution 1:50, dilution range 1:50-1:500) and solid phase ELISA (starting dilution 1:30, dilution range 1:30-1:3000).

URE-B1 (Y-19) is also recommended for detection of URE-B1 (isoforms 1-3 reactive) in additional species, including equine, canine, bovine and porcine.

Suitable for use as control antibody for URE-B1 siRNA (h): sc-61758, URE-B1 siRNA (m): sc-61759, URE-B1 shRNA Plasmid (h): sc-61758-SH, URE-B1 shRNA Plasmid (m): sc-61759-SH, URE-B1 shRNA (h) Lentiviral Particles: sc-61758-V and URE-B1 shRNA (m) Lentiviral Particles: sc-61759-V.

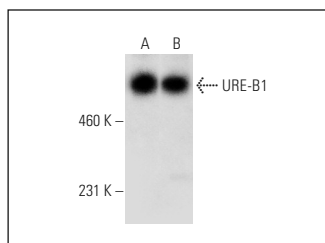
Molecular Weight of URE-B1: 483 kDa.

Positive Controls: HCT-116 whole cell lysate: sc-364175 or U-2 OS cell lysate: sc-2295.

RECOMMENDED SECONDARY REAGENTS

To ensure optimal results, the following support (secondary) reagents are recommended: 1) Western Blotting: use donkey anti-goat IgG-HRP: sc-2020 (dilution range: 1:2000-1:100,000) or Cruz Marker™ compatible donkey anti-goat IgG-HRP: sc-2033 (dilution range: 1:2000-1:5000), Cruz Marker™ Molecular Weight Standards: sc-2035, TBS Blotto A Blocking Reagent: sc-2333 and Western Blotting Luminol Reagent: sc-2048. 2) Immunoprecipitation: use Protein A/G PLUS-Agarose: sc-2003 (0.5 ml agarose/2.0 ml). 3) Immunofluorescence: use donkey anti-goat IgG-FITC: sc-2024 (dilution range: 1:100-1:400) or donkey anti-goat IgG-TR: sc-2783 (dilution range: 1:100-1:400) with UltraCruz™ Mounting Medium: sc-24941.

DATA



URE-B1 (Y-19): sc-49768. Western blot analysis of URE-B1 expression in HCT-116 (A) and U-2 OS (B) whole cell lysates.

STORAGE

Store at 4° C, **DO NOT FREEZE**. Stable for one year from the date of shipment. Non-hazardous. No MSDS required.

RESEARCH USE

For research use only, not for use in diagnostic procedures.