

CHD1 (N-16): sc-49813

BACKGROUND

Chromodomains participate in the recognition of lysine-methylated histone tails and nucleic acids. The CHD1 (chromodomain-helicase-DNA-binding protein 1) protein is named for its chromodomain, ATPase helicase-like domain and DNA-binding domain. CHD1 functions as an ATP-utilizing chromatin assembly factor. Unlike HP1 and Polycomb proteins that use single chromodomains to bind to their respective methylated Histone H3 tails, the two chromodomains of CHD1 cooperate to associate with one methylated H3 tail. Unique inserts within chromodomain 1 of CHD1 block the expected site of H3 tail binding seen in HP1 and Polycomb, and instead direct H3 binding to a groove at the interchromodomain junction. The human CHD1 gene maps to 5q15 and encodes a 1,709 amino acid deduced protein that shares 95.5% identity with the 1,711 amino acid mouse Chd1 polypeptide.

CHROMOSOMAL LOCATION

Genetic locus: CHD1 (human) mapping to 5q15; Chd1 (mouse) mapping to 17 A2.

SOURCE

CHD1 (N-16) is an affinity purified goat polyclonal antibody raised against a peptide mapping near the N-terminus of CHD1 of human origin.

PRODUCT

Each vial contains 100 µg IgG in 1.0 ml of PBS with < 0.1% sodium azide and 0.1% gelatin.

Blocking peptide available for competition studies, sc-49813 P, (100 µg peptide in 0.5 ml PBS containing < 0.1% sodium azide and 0.2% BSA).

STORAGE

Store at 4° C, ****DO NOT FREEZE****. Stable for one year from the date of shipment. Non-hazardous. No MSDS required.

APPLICATIONS

CHD1 (N-16) is recommended for detection of CHD1 of mouse, rat and human origin by Western Blotting (starting dilution 1:200, dilution range 1:100-1:1000), immunofluorescence (starting dilution 1:50, dilution range 1:50-1:500) and solid phase ELISA (starting dilution 1:30, dilution range 1:30-1:3000).

CHD1 (N-16) is also recommended for detection of CHD1 in additional species, including equine, canine, bovine, porcine and avian.

Suitable for use as control antibody for CHD1 siRNA (h): sc-60363, CHD1 siRNA (m): sc-60364, CHD1 shRNA Plasmid (h): sc-60363-SH, CHD1 shRNA Plasmid (m): sc-60364-SH, CHD1 shRNA (h) Lentiviral Particles: sc-60363-V and CHD1 shRNA (m) Lentiviral Particles: sc-60364-V.

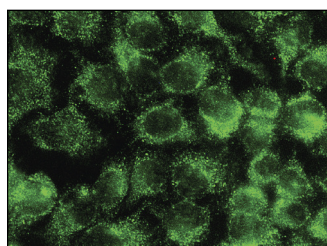
CHD1 (N-16) X TransCruz antibody is recommended for Gel Supershift and ChIP applications.

Molecular Weight of CHD1: 200 kDa.

RECOMMENDED SECONDARY REAGENTS

To ensure optimal results, the following support (secondary) reagents are recommended: 1) Western Blotting: use donkey anti-goat IgG-HRP: sc-2020 (dilution range: 1:2000-1:100,000) or Cruz Marker™ compatible donkey anti-goat IgG-HRP: sc-2033 (dilution range: 1:2000-1:5000), Cruz Marker™ Molecular Weight Standards: sc-2035, TBS Blotto A Blocking Reagent: sc-2333 and Western Blotting Luminol Reagent: sc-2048. 2) Immunofluorescence: use donkey anti-goat IgG-FITC: sc-2024 (dilution range: 1:100-1:400) or donkey anti-goat IgG-TR: sc-2783 (dilution range: 1:100-1:400) with UltraCruz™ Mounting Medium: sc-24941.

DATA



CHD1 (N-16): sc-49813. Immunofluorescence staining of methanol-fixed HeLa cells showing cytoplasmic localization.

SELECT PRODUCT CITATIONS

- Okada, M., et al. 2009. CENP-H-containing complex facilitates centromere deposition of CENP-A in cooperation with FACT and CHD1. *Mol. Biol. Cell* 20: 3986-3995.

RESEARCH USE

For research use only, not for use in diagnostic procedures.

PROTOCOLS

See our web site at www.scbt.com or our catalog for detailed protocols and support products.


 MONOS
Satisfaction
Guaranteed

Try **CHD1 (C-8): sc-271626**, our highly recommended monoclonal alternative to CHD1 (N-16).