

# CHMP3 (L-18): sc-49912

## BACKGROUND

The charged multivesicular body proteins, commonly designated CHMPs, belong to the vacuolar sorting protein family and function as chromatin-modifying proteins. CHMP1-6 are all components of ESCRT (endosomal sorting complex required for transport) I, II or III complexes. These complexes are crucial for sorting endosomal articles into multivesicular bodies (MVBs), as well as required for the formation of these bodies. CHMP3, also known as Vps24, associates directly with CHMP2 and CHMP4 for the disassembly of ESCRT-III complex in an ATP-dependent manner. During HIV-1 infection, the virus uses the ESCRT-III complex to mediate budding and exocytosis of viral proteins. Overexpression of CHMP3 strongly inhibits HIV-1 release. CHMP3 is expressed in brain, skeletal muscle, heart, lung, kidney and liver.

## REFERENCES

1. von Schwedler, U.K., Stuchell, M., Müller, B., Ward, D.M., Chung, H.Y., Morita, E., Wang, H.E., Davis, T., He, G.P., Cimbara, D.M., Scott, A., Kräusslich, H.G., Kaplan, J., Morham, S.G. and Sundquist, W.I. 2003. The protein network of HIV budding. *Cell* 114: 701-713.
2. Muziol, T., Pineda-Molina, E., Ravelli, R.B., Zamborlini, A., Usami, Y., Gottlinger, H. and Weissenhorn, W. 2006. Structural basis for budding by the ESCRT-III factor CHMP3. *Dev. Cell* 10: 821-830.
3. Bache, K.G., Stuffers, S., Malerod, L., Slagsvold, T., Raiborg, C., Lechardeur, D., Walchli, S., Lukacs, G.L., Brech, A. and Stenmark, H. 2006. The ESCRT-III subunit hVps24 is required for degradation but not silencing of the epidermal growth factor receptor. *Mol. Biol. Cell* 17: 2513-2523.
4. Agromayor, M. and Martin-Serrano, J. 2006. Interaction of AMSh with ESCRT-III and deubiquitination of endosomal cargo. *J. Biol. Chem.* 281: 23083-23091.

## CHROMOSOMAL LOCATION

Genetic locus: VPS24 (human) mapping to 2p11.2; Vps24 (mouse) mapping to 6 C1.

## SOURCE

CHMP3 (L-18) is an affinity purified goat polyclonal antibody raised against a peptide mapping within an internal region of CHMP3 of human origin.

## PRODUCT

Each vial contains 200 µg IgG in 1.0 ml of PBS with < 0.1% sodium azide and 0.1% gelatin.

Blocking peptide available for competition studies, sc-49912 P, (100 µg peptide in 0.5 ml PBS containing < 0.1% sodium azide and 0.2% BSA).

## STORAGE

Store at 4° C, **\*\*DO NOT FREEZE\*\***. Stable for one year from the date of shipment. Non-hazardous. No MSDS required.

## RESEARCH USE

For research use only, not for use in diagnostic procedures.

## APPLICATIONS

CHMP3 (L-18) is recommended for detection of CHMP3 of mouse, rat and human origin by Western Blotting (starting dilution 1:200, dilution range 1:100-1:1000), immunoprecipitation [1-2 µg per 100-500 µg of total protein (1 ml of cell lysate)], immunofluorescence (starting dilution 1:50, dilution range 1:50-1:500) and solid phase ELISA (starting dilution 1:30, dilution range 1:30-1:3000).

CHMP3 (L-18) is also recommended for detection of CHMP3 in additional species, including equine, canine, bovine and porcine.

Suitable for use as control antibody for CHMP3 siRNA (h): sc-60371, CHMP3 siRNA (m): sc-60372, CHMP3 shRNA Plasmid (h): sc-60371-SH, CHMP3 shRNA Plasmid (m): sc-60372-SH, CHMP3 shRNA (h) Lentiviral Particles: sc-60371-V and CHMP3 shRNA (m) Lentiviral Particles: sc-60372-V.

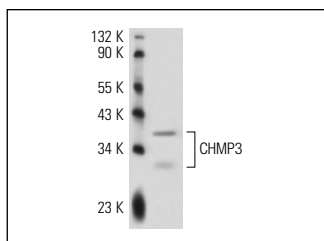
Molecular Weight of CHMP3: 33 kDa.

Positive Controls: 3T3-L1 cell lysate: sc-2243.

## RECOMMENDED SECONDARY REAGENTS

To ensure optimal results, the following support (secondary) reagents are recommended: 1) Western Blotting: use donkey anti-goat IgG-HRP: sc-2020 (dilution range: 1:2000-1:100,000) or Cruz Marker™ compatible donkey anti-goat IgG-HRP: sc-2033 (dilution range: 1:2000-1:5000), Cruz Marker™ Molecular Weight Standards: sc-2035, TBS Blotto A Blocking Reagent: sc-2333 and Western Blotting Luminol Reagent: sc-2048. 2) Immunoprecipitation: use Protein A/G PLUS-Agarose: sc-2003 (0.5 ml agarose/2.0 ml). 3) Immunofluorescence: use donkey anti-goat IgG-FITC: sc-2024 (dilution range: 1:100-1:400) or donkey anti-goat IgG-TR: sc-2783 (dilution range: 1:100-1:400) with UltraCruz™ Mounting Medium: sc-24941.

## DATA



CHMP3 (L-18): sc-49912. Western blot analysis of CHMP3 expression in 3T3-L1 whole cell lysate.

## PROTOCOLS

See our web site at [www.scbt.com](http://www.scbt.com) or our catalog for detailed protocols and support products.

**MONOS**  
Satisfaction  
Guaranteed

Try **CHMP3 (F-1): sc-166361** or **CHMP3 (C-1): sc-393541**, our highly recommended monoclonal alternatives to CHMP3 (L-18).