

Hugl-1 (C-15): sc-49990

BACKGROUND

Hugl-1 is a cortical cytoskeleton protein involved in the regulation of mitotic spindle orientation, differentiation, proliferation and tissue organization of neuroepithelial cells. It localizes to the cytoplasm and is found in a complex involved in maintaining cell polarity and epithelial integrity. Hugl-1 is associated with nonmuscle Myosin II heavy chain and interacts with PRKCI/aPKC, PARD6B/Par-6, PARD6A and STX4A. The Hugl-1 protein is expressed in kidney, brain and muscle. Expression of Hugl-1 increases cell adhesion and decreases cell migration. Hugl-1 functions as a tumor suppressor in humans, and loss of Hugl-1 expression contributes to colorectal cancer and melanoma progression. LLGL1, the gene encoding for Hugl-1, has significant homology to the *Drosophila* tumor suppressor gene, *l(2)gl*, which encodes the protein Lgl. Like Hugl-1, Lgl is also a cortical cytoskeleton protein involved in maintaining cell polarity and epithelial integrity.

CHROMOSOMAL LOCATION

Genetic locus: LLGL1 (human) mapping to 17p11.2; Llgl1 (mouse) mapping to 11 B2.

SOURCE

Hugl-1 (C-15) is an affinity purified goat polyclonal antibody raised against a peptide mapping near the C-terminus of Hugl-1 of human origin.

PRODUCT

Each vial contains 200 µg IgG in 1.0 ml of PBS with < 0.1% sodium azide and 0.1% gelatin.

Blocking peptide available for competition studies, sc-49990 P, (100 µg peptide in 0.5 ml PBS containing < 0.1% sodium azide and 0.2% BSA).

RESEARCH USE

For research use only, not for use in diagnostic procedures.

APPLICATIONS

Hugl-1 (C-15) is recommended for detection of Hugl-1 of mouse, rat and human origin by Western Blotting (starting dilution 1:200, dilution range 1:100-1:1000), immunofluorescence (starting dilution 1:50, dilution range 1:50-1:500), immunohistochemistry (including paraffin-embedded sections) (starting dilution 1:50, dilution range 1:50-1:500) and solid phase ELISA (starting dilution 1:30, dilution range 1:30-1:3000).

Hugl-1 (C-15) is also recommended for detection of Hugl-1 in additional species, including equine, canine and bovine.

Suitable for use as control antibody for Hugl-1 siRNA (h): sc-60818, Hugl-1 siRNA (m): sc-60819, Hugl-1 shRNA Plasmid (h): sc-60818-SH, Hugl-1 shRNA Plasmid (m): sc-60819-SH, Hugl-1 shRNA (h) Lentiviral Particles: sc-60818-V and Hugl-1 shRNA (m) Lentiviral Particles: sc-60819-V.

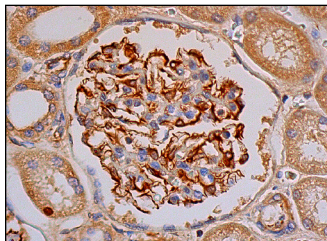
Molecular Weight of Hugl-1: 115 kDa.

Positive Controls: HeLa nuclear extract: sc-2120 or IMR-32 cell lysate: sc-2409.

RECOMMENDED SECONDARY REAGENTS

To ensure optimal results, the following support (secondary) reagents are recommended: 1) Western Blotting: use donkey anti-goat IgG-HRP: sc-2020 (dilution range: 1:2000-1:100,000) or Cruz Marker™ compatible donkey anti-goat IgG-HRP: sc-2033 (dilution range: 1:2000-1:5000), Cruz Marker™ Molecular Weight Standards: sc-2035, TBS Blotto A Blocking Reagent: sc-2333 and Western Blotting Luminol Reagent: sc-2048. 2) Immunofluorescence: use donkey anti-goat IgG-FITC: sc-2024 (dilution range: 1:100-1:400) or donkey anti-goat IgG-TR: sc-2783 (dilution range: 1:100-1:400) with UltraCruz™ Mounting Medium: sc-24941. 3) Immunohistochemistry: use ImmunoCruz™: sc-2053 or ABC: sc-2023 goat IgG Staining Systems.

DATA



Hugl-1 (C-15): sc-49990. Immunoperoxidase staining of formalin fixed, paraffin-embedded human kidney tissue showing membrane staining of cells in glomeruli and cytoplasmic staining of cells in tubules.

STORAGE

Store at 4° C, **DO NOT FREEZE**. Stable for one year from the date of shipment. Non-hazardous. No MSDS required.

PROTOCOLS

See our web site at www.scbt.com or our catalog for detailed protocols and support products.

MONOS
Satisfaction
Guaranteed

Try **Hugl-1 (B-6): sc-136993** or **Hugl-1 (A-2): sc-136992**, our highly recommended monoclonal alternatives to Hugl-1 (C-15).