

# Membralin (L-19): sc-50093

## BACKGROUND

The gene encoding human Membralin, C19orf6, localizes to chromosome 19p13.3. It contains 11 exons, which encode at least two splice variants in human cancer. Membralin is a multi-pass membrane protein and exists either as a long or short form. The long form of Membralin comprises all 11 exons, while the short form of Membralin contains all exons except for exon 10. Expression of different Membralin isoforms depends on tissue type. The long form is expressed in ovarian and colorectal carcinomas, whereas the short form is expressed in breast or pancreatic carcinomas. In ovarian carcinomas, Membralin expression is highest in serous carcinomas as compared to surface epithelium carcinomas and, therefore, may be used as a novel tumor-associated marker in ovarian serous carcinomas.

## CHROMOSOMAL LOCATION

Genetic locus: C19orf6 (human) mapping to 19p13.3; ORF61 (mouse) mapping to 10 C1.

## SOURCE

Membralin (L-19) is an affinity purified goat polyclonal antibody raised against a peptide mapping within an internal region of Membralin of human origin.

## PRODUCT

Each vial contains 200 µg IgG in 1.0 ml of PBS with < 0.1% sodium azide and 0.1% gelatin.

Blocking peptide available for competition studies, sc-50093 P, (100 µg peptide in 0.5 ml PBS containing < 0.1% sodium azide and 0.2% BSA).

## STORAGE

Store at 4° C, **\*\*DO NOT FREEZE\*\***. Stable for one year from the date of shipment. Non-hazardous. No MSDS required.

## APPLICATIONS

Membralin (L-19) is recommended for detection of Membralin isoforms 1 and 2 of mouse, rat and human origin by Western Blotting (starting dilution 1:200, dilution range 1:100-1:1000), immunoprecipitation [1-2 µg per 100-500 µg of total protein (1 ml of cell lysate)], immunofluorescence (starting dilution 1:50, dilution range 1:50-1:500) and solid phase ELISA (starting dilution 1:30, dilution range 1:30-1:3000).

Membralin (L-19) is also recommended for detection of Membralin isoforms 1 and 2 in additional species, including bovine, porcine and avian.

Suitable for use as control antibody for Membralin siRNA (h): sc-61018, Membralin siRNA (m): sc-61019, Membralin shRNA Plasmid (h): sc-61018-SH, Membralin shRNA Plasmid (m): sc-61019-SH, Membralin shRNA (h) Lentiviral Particles: sc-61018-V and Membralin shRNA (m) Lentiviral Particles: sc-61019-V.

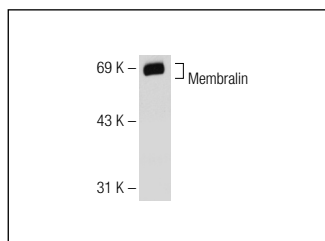
Molecular Weight of Membralin isoforms: 68/46 kDa.

Positive Controls: Jurkat whole cell lysate: sc-2204.

## RECOMMENDED SECONDARY REAGENTS

To ensure optimal results, the following support (secondary) reagents are recommended: 1) Western Blotting: use donkey anti-goat IgG-HRP: sc-2020 (dilution range: 1:2000-1:100,000) or Cruz Marker™ compatible donkey anti-goat IgG-HRP: sc-2033 (dilution range: 1:2000-1:5000), Cruz Marker™ Molecular Weight Standards: sc-2035, TBS Blotto A Blocking Reagent: sc-2333 and Western Blotting Luminol Reagent: sc-2048. 2) Immunoprecipitation: use Protein A/G PLUS-Agarose: sc-2003 (0.5 ml agarose/2.0 ml). 3) Immunofluorescence: use donkey anti-goat IgG-FITC: sc-2024 (dilution range: 1:100-1:400) or donkey anti-goat IgG-TR: sc-2783 (dilution range: 1:100-1:400) with UltraCruz™ Mounting Medium: sc-24941.

## DATA



Membralin (L-19): sc-50093. Western blot analysis of Membralin expression in Jurkat whole cell lysate.

## RESEARCH USE

For research use only, not for use in diagnostic procedures.

## PROTOCOLS

See our web site at [www.scbt.com](http://www.scbt.com) or our catalog for detailed protocols and support products.