

NDUFS1 (E-20): sc-50132

BACKGROUND

The multisubunit NADH:ubiquinone oxidoreductase (complex I) is the first enzyme complex in the electron transport chain of mitochondria. Through use of chaotropic agents, complex I can be separated into 3 different fractions: a flavoprotein fraction, an iron-sulfur protein (IP) fraction, and a hydrophobic protein (HP) fraction. The IP fraction contains NDUFS1-7. NDUFS1, a 75kD protein, is the largest subunit of complex I, and is thought to be the first of the Fe-S proteins to accept electrons from an NADH-flavoprotein reductase within the complex. NDUFS1 may even form part of the active site crevice where NADH is oxidized. NDUFS1 is also a critical caspase substrate in mitochondria, and caspase cleavage of NDUFS1 is required for several mitochondrial changes associated with apoptosis.

REFERENCES

1. Chow, W., et al. 1991. Determination of the cDNA sequence for the human mitochondrial 75 kDa Fe-S protein of NADH-coenzyme Q reductase. *Eur. J. Biochem.* 201: 547-550.
2. Duncan, A.M., et al. 1992. Localization of the human 75-kDa Fe-S protein of NADH-coenzyme Q reductase gene (NDUFS1) to 2q33-q34. *Cytogenet. Cell Genet.* 60: 212-213.
3. Benit, P., et al. 2001. Large-scale deletion and point mutations of the nuclear NDUFV1 and NDUFS1 genes in mitochondrial complex I deficiency. *Am. J. Hum. Genet.* 68: 1344-1352.
4. Karahan, O.I. et al. 2005. Ultrasound evaluation of peritoneal catheter tunnel in catheter related infections in CAPD. *Int. Urol. Nephrol.* 37: 363-366.
5. Martin, M.A., et al. 2005. Leigh syndrome associated with mitochondrial complex I deficiency due to a novel mutation in the NDUFS1 gene. *Arch. Neurol.* 62: 659-661.
6. Smeitink, J.A., et al. 2005. Cell biological consequences of mitochondrial NADH: ubiquinone deficiency. *Curr. Neurovasc. Res.* 1: 29-40.
7. Sparks, L.M., et al. 2005. A high-fat diet coordinately downregulates genes required for mitochondrial oxidative phosphorylation in skeletal muscle. *Diabetes* 54: 1926-1933.
8. Fleming, D., et al. 2006. A ubiquinone oxidoreductase (complex I). *J. Mol. Microbiol. Biotechnol.* 10: 208-222.

CHROMOSOMAL LOCATION

Genetic locus: NDUFS1 (human) mapping to 2q33.3; Ndufs1 (mouse) mapping to 1 C2.

SOURCE

NDUFS1 (E-20) is an affinity purified goat polyclonal antibody raised against a peptide mapping within an internal region of NDUFS1 of human origin.

STORAGE

Store at 4° C, ****DO NOT FREEZE****. Stable for one year from the date of shipment. Non-hazardous. No MSDS required.

PRODUCT

Each vial contains 200 µg IgG in 1.0 ml of PBS with < 0.1% sodium azide and 0.1% gelatin.

Blocking peptide available for competition studies, sc-50132 P, (100 µg peptide in 0.5 ml PBS containing < 0.1% sodium azide and 0.2% BSA).

APPLICATIONS

NDUFS1 (E-20) is recommended for detection of NDUFS1 of mouse, rat and human origin by Western Blotting (starting dilution 1:200, dilution range 1:100-1:1000), immunoprecipitation [1-2 µg per 100-500 µg of total protein (1 ml of cell lysate)], immunofluorescence (starting dilution 1:50, dilution range 1:50-1:500), immunohistochemistry (including paraffin-embedded sections) (starting dilution 1:50, dilution range 1:50-1:500) and solid phase ELISA (starting dilution 1:30, dilution range 1:30-1:3000).

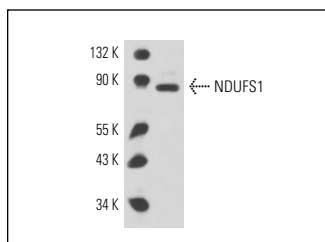
NDUFS1 (E-20) is also recommended for detection of NDUFS1 in additional species, including equine, canine, bovine, porcine and avian.

Suitable for use as control antibody for NDUFS1 siRNA (h): sc-61164, NDUFS1 siRNA (m): sc-61165, NDUFS1 shRNA Plasmid (h): sc-61164-SH, NDUFS1 shRNA Plasmid (m): sc-61165-SH, NDUFS1 shRNA (h) Lentiviral Particles: sc-61164-V and NDUFS1 shRNA (m) Lentiviral Particles: sc-61165-V.

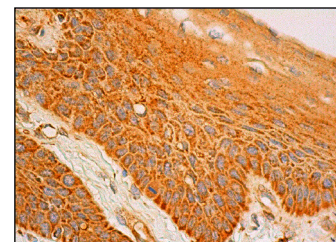
Molecular Weight of NDUFS1: 75 kDa.

Positive Controls: mouse heart extract: sc-2254 or HeLa whole cell lysate: sc-2200.

DATA



NDUFS1 (E-20): sc-50132. Western blot analysis of NDUFS1 expression in mouse heart tissue extract.



NDUFS1 (E-20): sc-50132. Immunoperoxidase staining of formalin fixed, paraffin-embedded human oral mucosa tissue showing cytoplasmic staining of squamous epithelial cells.

RESEARCH USE

For research use only, not for use in diagnostic procedures.



Try **NDUFS1 (E-8): sc-271510** or **NDUFS1 (G-6): sc-271387**, our highly recommended monoclonal alternatives to NDUFS1 (E-20).