

# GS1 (C-17): sc-50235

## BACKGROUND

The Adiponutrin family consists of Adiponutrin (ADPN), adipocyte triglyceride lipase (ATGL, also designated Desnutrin), GS1, GS2, GS2-like and PNPLA1. ADPN, ATGL and GS2 display lipase activity, which is dependent upon the presence of an activated serine residue. GS1, also designated DXF68S1E or haloacid dehalogenase-like hydrolase domain containing 1A (HDHD1A), is a 214 amino acid protein that is detected in human placenta and fibroblasts. The gene which encodes for GS1, HDHD1A, is of interest because it is an X-linked gene that escapes X-inactivation. This characteristic of the HDHD1A gene is particularly important in the understanding of human X chromosome structural organization as well as the mechanism of X-inactivation.

## REFERENCES

- Salido, E.C., Yen, P.H., Koprivnikar, K., Yu, L.C. and Shapiro, L.J. 1992. The human enamel protein gene amelogenin is expressed from both the X and the Y chromosomes. *Am. J. Hum. Genet.* 50: 303-316.
- Yen, P.H., Ellison, J., Salido, E.C., Mohandas, T. and Shapiro, L. 1993. Isolation of a new gene from the distal short arm of the human X chromosome that escapes X-inactivation. *Hum. Mol. Genet.* 1: 47-52.

## CHROMOSOMAL LOCATION

Genetic locus: HDHD1A (human) mapping to Xp22.31.

## SOURCE

GS1 (C-17) is an affinity purified goat polyclonal antibody raised against a peptide mapping at the C-terminus of GS1 of human origin.

## PRODUCT

Each vial contains 200 µg IgG in 1.0 ml of PBS with < 0.1% sodium azide and 0.1% gelatin.

Blocking peptide available for competition studies, sc-50235 P, (100 µg peptide in 0.5 ml PBS containing < 0.1% sodium azide and 0.2% BSA).

## APPLICATIONS

GS1 (C-17) is recommended for detection of GS1 of human origin by Western Blotting (starting dilution 1:200, dilution range 1:100-1:1000), immunoprecipitation [1-2 µg per 100-500 µg of total protein (1 ml of cell lysate)], immunofluorescence (starting dilution 1:50, dilution range 1:50-1:500) and solid phase ELISA (starting dilution 1:30, dilution range 1:30-1:3000).

GS1 (C-17) is also recommended for detection of GS1 in additional species, including equine, canine and porcine.

Suitable for use as control antibody for GS1 siRNA (h): sc-60768, GS1 shRNA Plasmid (h): sc-60768-SH and GS1 shRNA (h) Lentiviral Particles: sc-60768-V.

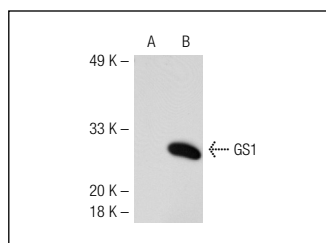
Molecular Weight of GS1: 24 kDa.

Positive Controls: GS1 (h): 293T Lysate: sc-113475, SW-13 cell lysate: sc-24778 or COLO 320DM cell lysate: sc-2226.

## RECOMMENDED SECONDARY REAGENTS

To ensure optimal results, the following support (secondary) reagents are recommended: 1) Western Blotting: use donkey anti-goat IgG-HRP: sc-2020 (dilution range: 1:2000-1:100,000) or Cruz Marker™ compatible donkey anti-goat IgG-HRP: sc-2033 (dilution range: 1:2000-1:5000), Cruz Marker™ Molecular Weight Standards: sc-2035, TBS Blotto A Blocking Reagent: sc-2333 and Western Blotting Luminol Reagent: sc-2048. 2) Immunoprecipitation: use Protein A/G PLUS-Agarose: sc-2003 (0.5 ml agarose/2.0 ml). 3) Immunofluorescence: use donkey anti-goat IgG-FITC: sc-2024 (dilution range: 1:100-1:400) or donkey anti-goat IgG-TR: sc-2783 (dilution range: 1:100-1:400) with UltraCruz™ Mounting Medium: sc-24941.

## DATA



GS1 (C-17): sc-50235. Western blot analysis of GS1 expression in non-transfected: sc-117752 (A) and human GS1 transfected: sc-113475 (B) 293T whole cell lysates.

## STORAGE

Store at 4° C, \*\*DO NOT FREEZE\*\*. Stable for one year from the date of shipment. Non-hazardous. No MSDS required.

## RESEARCH USE

For research use only, not for use in diagnostic procedures.

## PROTOCOLS

See our web site at [www.scbt.com](http://www.scbt.com) or our catalog for detailed protocols and support products.

**MONOS**  
Satisfaction  
Guaranteed

Try **GS1 (B-4): sc-166043** or **GS1 (G-10): sc-365005**, our highly recommended monoclonal alternatives to GS1 (C-17).