

GS1 (M-18): sc-50238

BACKGROUND

The Adiponutrin family consists of Adiponutrin (ADPN), adipocyte triglyceride lipase (ATGL, also designated desnutrin), GS1, GS2, GS2-like and PNPLA1. ADPN, ATGL and GS2 display lipase activity, which is dependent upon the presence of an activated serine residue. GS1, also designated DXF68S1E or haloacid dehalogenase-like hydrolase domain containing 1A (HDHD1A), is a 214-amino acid protein that is detected in human placenta and fibroblasts. The gene which encodes for GS1, HDHD1A, is of interest because it is an X-linked gene that escapes X-inactivation. This characteristic of the HDHD1A gene is particularly important in the understanding of human X chromosome structural organization as well as the mechanism of X-inactivation.

REFERENCES

- Salido, E.C., et al. 1992. The human enamel protein gene amelogenin is expressed from both the X and the Y chromosomes. *Am. J. Hum. Genet.* 50: 303-316.
- Yen, P.H., et al. 1993. Isolation of a new gene from the distal short arm of the human X chromosome that escapes X-inactivation. *Hum. Mol. Genet.* 1: 47-52.
- Soehnge, H., et al. 1997. Cloning and sequencing of ribosomal protein L27a and a gene similar to human GS1 in *Drosophila*. *Gene* 185: 257-263.
- Online Mendelian Inheritance in Man, OMIM™. 2002. Johns Hopkins University, Baltimore, MD. MIM Number: 306480. World Wide Web URL: <http://www.ncbi.nlm.nih.gov/omim/>
- van Noort, V., et al. 2003. Predicting gene function by conserved co-expression. *Trends Genet.* 19: 238-242.
- Wieland, I., et al. 2003. Further delineation of Wittwer syndrome and refinement of the mapping region. *Am. J. Med. Genet. A.* 116: 57-60.
- Gerhard, D.S., et al. 2004. The status, quality, and expansion of the NIH full-length cDNA project: the Mammalian Gene Collection (MGC). *Genome Res.* 14: 2121-2127.
- Szebeni, J. et al., 2005. Complement activation-Related Cardiac Anaphylaxis in Pigs: Role of C5a Anaphylatoxin and Adenosine in Liposome-Induced Abnormalities in ECG and Heart Function. *Am. J. Physiol. Heart. Circ. Physiol.* 290: H1050-1058.

CHROMOSOMAL LOCATION

Genetic locus: HDHD1A (human) mapping to Xp22.31; Hdhd1a (mouse) mapping to 18 C.

SOURCE

GS1 (M-18) is an affinity purified goat polyclonal antibody raised against a peptide mapping at the C-terminus of GS1 of mouse origin.

STORAGE

Store at 4° C, **DO NOT FREEZE**. Stable for one year from the date of shipment. Non-hazardous. No MSDS required.

PRODUCT

Each vial contains 200 µg IgG in 1.0 ml of PBS with < 0.1% sodium azide and 0.1% gelatin.

Blocking peptide available for competition studies, sc-50238 P, (100 µg peptide in 0.5 ml PBS containing < 0.1% sodium azide and 0.2% BSA).

APPLICATIONS

GS1 (M-18) is recommended for detection of GS1 of mouse, rat, and, to a lesser extent, human origin by Western Blotting (starting dilution 1:200, dilution range 1:100-1:1000), immunoprecipitation [1–2 µg per 100–500 µg of total protein (1 ml of cell lysate)], immunofluorescence (starting dilution 1:50, dilution range 1:50-1:500) and solid phase ELISA (starting dilution 1:30, dilution range 1:30-1:3000).

Suitable for use as control antibody for GS1 siRNA (h): sc-60768, GS1 siRNA (m): sc-60769, GS1 shRNA Plasmid (h): sc-60768-SH, GS1 shRNA Plasmid (m): sc-60769-SH, GS1 shRNA (h) Lentiviral Particles: sc-60768-V and GS1 shRNA (m) Lentiviral Particles: sc-60769-V.

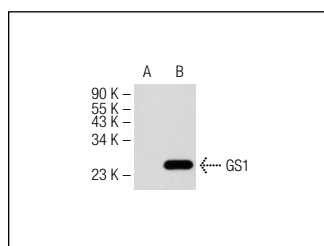
Molecular Weight of GS1: 24 kDa.

Positive Controls: GS1 (h): 293T Lysate: sc-113475, rat testis extract: sc-2400 or rat placenta tissue extract.

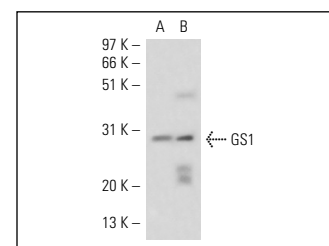
RECOMMENDED SECONDARY REAGENTS

To ensure optimal results, the following support (secondary) reagents are recommended: 1) Western Blotting: use donkey anti-goat IgG-HRP: sc-2020 (dilution range: 1:2000-1:100,000) or Cruz Marker™ compatible donkey anti-goat IgG-HRP: sc-2033 (dilution range: 1:2000-1:5000), Cruz Marker™ Molecular Weight Standards: sc-2035, TBS Blotto A Blocking Reagent: sc-2333 and Western Blotting Luminol Reagent: sc-2048. 2) Immunoprecipitation: use Protein A/G PLUS-Agarose: sc-2003 (0.5 ml agarose/2.0 ml). 3) Immunofluorescence: use donkey anti-goat IgG-FITC: sc-2024 (dilution range: 1:100-1:400) or donkey anti-goat IgG-TR: sc-2783 (dilution range: 1:100-1:400) with UltraCruz™ Mounting Medium: sc-24941.

DATA



GS1 (M-18): sc-50238. Western blot analysis of GS1 expression in non-transfected: sc-117752 (A) and human GS1 transfected: sc-113475 (B) 293T whole cell lysates.



GS1 (M-18): sc-50238. Western blot analysis of GS1 expression in rat placenta (A) and rat testis (B) tissue extracts.

RESEARCH USE

For research use only, not for use in diagnostic procedures.