

# Ribosomal Protein L28 (FL-137): sc-50362

## BACKGROUND

The genes encoding for mammalian ribosomal proteins comprise multigene families that consist predominantly of multiple processed pseudogenes and one functional intro-containing gene within their coding regions. Ribosomes, the organelles that catalyze protein synthesis, consist of a small 40S subunit and a large 60S subunit. 60S ribosomal protein L28 is encoded by the RPL28 gene. This protein, which is a structural constituent of the ribosome, is an RNA binding protein involved in protein biosynthesis.

## REFERENCES

- Gross, T., Nischt, R., Gatermann, K., Swida, U. and Kaufer, N.F. 1988. Primary structure of the ribosomal protein gene S6 from *Schizosaccharomyces pombe*. *Curr. Genet.* 13: 57-63.
- Lott, J.B. and Mackie, G.A. 1988. Isolation and characterization of cloned cDNAs that code for human ribosomal protein S6. *Gene* 65: 31-39.
- Heinze, H., Arnold, H.H., Fischer, D. and Kruppa, J. 1988. The primary structure of the human ribosomal protein S6 derived from a cloned cDNA. *J. Biol. Chem.* 263: 4139-4144.
- Wool, I.G., Chan, Y.L., Paz, V. and Olivera, J. 1990. The primary structure of rat ribosomal proteins: the amino acid sequences of L27a and L28 and corrections in the sequences of S4 and S12. *Biochim. Biophys. Acta* 1050: 69-73.
- Feo, S., Davies, B. and Fried, M. 1992. The mapping of seven intron-containing ribosomal protein genes shows they are unlinked in the human genome. *Genomics* 13: 201-207.
- Frigerio, J.M., Dagorn, J.C. and Lovanna, J.L. 1995. Cloning, sequencing and expression of the L5, L21, L27a, L28, S5, S9, S10 and S29 human ribosomal protein mRNAs. *Biochim. Biophys. Acta* 1262: 64-68.
- Hernandez, V.P. and Fallon, A.M. 1999. Ribosomal protein S6 cDNA from two *Aedes* mosquitoes encodes a carboxyl-terminal extension that resembles Histone H1 proteins. *Genetica* 106: 263-267.

## CHROMOSOMAL LOCATION

Genetic locus: RPL28 (human) mapping to 19q13.42; Rpl28 (mouse) mapping to 7 A1.

## SOURCE

Ribosomal Protein L28 (FL-137) is a rabbit polyclonal antibody raised against amino acids 1-137 representing full length Ribosomal Protein L28 of human origin.

## PRODUCT

Each vial contains 200 µg IgG in 1.0 ml of PBS with < 0.1% sodium azide and 0.1% gelatin.

## STORAGE

Store at 4° C, **\*\*DO NOT FREEZE\*\***. Stable for one year from the date of shipment. Non-hazardous. No MSDS required.

## APPLICATIONS

Ribosomal Protein L28 (FL-137) is recommended for detection of Ribosomal Protein L28 of mouse, rat and human origin by Western Blotting (starting dilution 1:200, dilution range 1:100-1:1000), immunoprecipitation [1-2 µg per 100-500 µg of total protein (1 ml of cell lysate)], immunofluorescence (starting dilution 1:50, dilution range 1:50-1:500) and solid phase ELISA (starting dilution 1:30, dilution range 1:30-1:3000).

Ribosomal Protein L28 (FL-137) is also recommended for detection of Ribosomal Protein L28 in additional species, including equine, canine and bovine.

Suitable for use as control antibody for Ribosomal Protein L28 siRNA (h): sc-44078, Ribosomal Protein L28 siRNA (m): sc-60079, Ribosomal Protein L28 shRNA Plasmid (h): sc-44078-SH, Ribosomal Protein L28 shRNA Plasmid (m): sc-60079-SH, Ribosomal Protein L28 shRNA (h) Lentiviral Particles: sc-44078-V and Ribosomal Protein L28 shRNA (m) Lentiviral Particles: sc-60079-V.

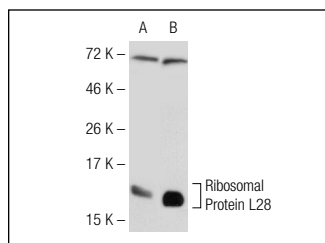
Molecular Weight of Ribosomal Protein L28: 16 kDa.

Positive Controls: NIH/3T3 whole cell lysate: sc-2210, Ribosomal Protein L28 (h2): 293T Lysate: sc-174734 or HeLa whole cell lysate: sc-2200.

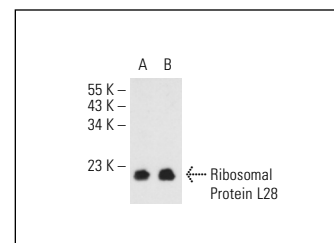
## RECOMMENDED SECONDARY REAGENTS

To ensure optimal results, the following support (secondary) reagents are recommended: 1) Western Blotting: use goat anti-rabbit IgG-HRP: sc-2004 (dilution range: 1:2000-1:100,000) or Cruz Marker™ compatible goat anti-rabbit IgG-HRP: sc-2030 (dilution range: 1:2000-1:5000), Cruz Marker™ Molecular Weight Standards: sc-2035, TBS Blotto A Blocking Reagent: sc-2333 and Western Blotting Luminol Reagent: sc-2048. 2) Immunoprecipitation: use Protein A/G PLUS-Agarose: sc-2003 (0.5 ml agarose/2.0 ml). 3) Immunofluorescence: use goat anti-rabbit IgG-FITC: sc-2012 (dilution range: 1:100-1:400) or goat anti-rabbit IgG-TR: sc-2780 (dilution range: 1:100-1:400) with UltraCruz™ Mounting Medium: sc-24941.

## DATA



Ribosomal Protein L28 (FL-137): sc-50362. Western blot analysis of Ribosomal Protein L28 expression in non-transfected: sc-117752 (A) and human Ribosomal Protein L28 transfected: sc-174734 (B) 293T whole cell lysates.



Ribosomal Protein L28 (FL-137): sc-50362. Western blot analysis of Ribosomal Protein L28 expression in HeLa (A) and NIH/3T3 (B) whole cell lysates.

## RESEARCH USE

For research use only, not for use in diagnostic procedures.