

envoplakin (H-145): sc-50448

BACKGROUND

Paraneoplastic pemphigus (PNP) is an autoimmune blistering disease that is associated with underlying neoplasms. PNP sera react with multiple plakin family proteins, among which only envoplakin and periplakin are constantly detected. Envoplakin, a membrane-associated precursor of the epidermal cornified envelope and desmosomes, is a member of the plakin family of proteins. Envoplakin is expressed in epidermal and esophageal keratinocytes and nonepithelial stratified squamous Epithelia, but not in simple epithelia or nonepithelial cells. Envoplakin co-localizes with desmoplakin at desmosomes and on keratin filaments throughout the differentiated layers of the epidermis, but mainly accumulates in nuclear and cytoplasmic aggregates with associated intermediate filaments. The envoplakin rod domain is required for aggregation and the linker domain is required for intermediate filament association. The distribution of envoplakin at the interdesmosomal plasma membrane depends on heterodimerization with periplakin.

CHROMOSOMAL LOCATION

Genetic locus: EVPL (human) mapping to 17q25.1; Evpl (mouse) mapping to 11 E2.

SOURCE

envoplakin (H-145) is a rabbit polyclonal antibody raised against amino acids 91-235 mapping near the N-terminus of envoplakin of human origin.

PRODUCT

Each vial contains 200 µg IgG in 1.0 ml of PBS with < 0.1% sodium azide and 0.1% gelatin.

STORAGE

Store at 4° C, ****DO NOT FREEZE****. Stable for one year from the date of shipment. Non-hazardous. No MSDS required.

APPLICATIONS

envoplakin (H-145) is recommended for detection of envoplakin of mouse, rat and human origin by Western Blotting (starting dilution 1:200, dilution range 1:100-1:1000), immunoprecipitation [1-2 µg per 100-500 µg of total protein (1 ml of cell lysate)], immunofluorescence (starting dilution 1:50, dilution range 1:50-1:500) and solid phase ELISA (starting dilution 1:30, dilution range 1:30-1:3000).

envoplakin (H-145) is also recommended for detection of envoplakin in additional species, including equine, canine, bovine and porcine.

Suitable for use as control antibody for envoplakin siRNA (h): sc-43412, envoplakin siRNA (m): sc-43413, envoplakin shRNA Plasmid (h): sc-43412-SH, envoplakin shRNA Plasmid (m): sc-43413-SH, envoplakin shRNA (h) Lentiviral Particles: sc-43412-V and envoplakin shRNA (m) Lentiviral Particles: sc-43413-V.

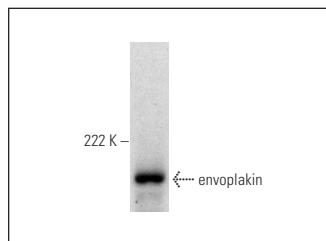
Molecular Weight of envoplakin: 210 kDa.

Positive Controls: HeLa whole cell lysate: sc-2200 or A549 cell lysate: sc-2413.

RECOMMENDED SECONDARY REAGENTS

To ensure optimal results, the following support (secondary) reagents are recommended: 1) Western Blotting: use goat anti-rabbit IgG-HRP: sc-2004 (dilution range: 1:2000-1:100,000) or Cruz Marker™ compatible goat anti-rabbit IgG-HRP: sc-2030 (dilution range: 1:2000-1:5000), Cruz Marker™ Molecular Weight Standards: sc-2035, TBS Blotto A Blocking Reagent: sc-2333 and Western Blotting Luminol Reagent: sc-2048. 2) Immunoprecipitation: use Protein A/G PLUS-Agarose: sc-2003 (0.5 ml agarose/2.0 ml). 3) Immunofluorescence: use goat anti-rabbit IgG-FITC: sc-2012 (dilution range: 1:100-1:400) or goat anti-rabbit IgG-TR: sc-2780 (dilution range: 1:100-1:400) with UltraCruz™ Mounting Medium: sc-24941.

DATA



envoplakin (H-145): sc-50448. Western blot analysis of envoplakin expression in MDCK whole cell lysate.

RESEARCH USE

For research use only, not for use in diagnostic procedures.

PROTOCOLS

See our web site at www.scbt.com or our catalog for detailed protocols and support products.


 MONOS
Satisfaction
Guaranteed

Try **envoplakin (F-4): sc-137033** or **envoplakin (CRENV-1): sc-53276**, our highly recommended monoclonal alternatives to envoplakin (H-145).