

NALP10 (S-19): sc-50610

BACKGROUND

The NACHT-, LRR- and PYD-containing protein (NALP) family functions in the regulation of apoptosis and inflammatory signaling pathways. Members of the NALP family (also designated Pyrin-containing APAF1-like proteins) include NALP1 through NALP11. Several family members, such as NALP1, NALP2, NALP3 and NALP6, influence NF κ B and caspase pathways as components of the inflammasome. NALP10 is a member of the NALP family that lacks the LRR region but also may play a regulatory role in the innate immune system. NALP10 inhibits NF κ B activation as well as apoptosis induced by ASC. It is highly expressed in brain, heart and skeletal muscle and is regulated by Annexin A7 in a mechanism that may be involved with tumorigenesis.

REFERENCES

1. Online Mendelian Inheritance in Man, OMIM[™]. 2002. Johns Hopkins University, Baltimore, MD. MIM Number: 609662. World Wide Web URL: <http://www.ncbi.nlm.nih.gov/omim/>
2. Chamailard, M., et al. 2003. Nods, NALPs and NAIP: intracellular regulators of bacterial-induced inflammation. *Cell. Microbiol.* 5: 581-592.
3. Tschopp, J., et al. 2003. NALPs: a novel protein family involved in inflammation. *Nat. Rev. Mol. Cell Biol.* 4: 95-104.
4. Hiller, S., et al. 2003. NMR structure of the apoptosis- and inflammation-related NALP1 Pyrin domain. *Structure* 11: 1199-1205.
5. Sanz, C., et al. 2004. NALP1 is a transcriptional target for cAMP-response-element-binding protein (CREB) in myeloid leukaemia cells. *Biochem. J.* 384: 281-286.
6. Liu, F., et al. 2004. Expression of NALP1 in cerebellar granule neurons stimulates apoptosis. *Cell. Signal.* 16: 1013-1021.
7. Damiano, J.S., et al. 2004. Heterotypic interactions among NACHT domains: implications for regulation of innate immune responses. *Biochem. J.* 381: 213-219.
8. Kinoshita, T., et al. 2005. PYPAF3, a Pyrin-containing APAF-1-like protein, is a feedback regulator of caspase-1-dependent interleukin-1 β secretion. *J. Biol. Chem.* 280: 21720-21725.

CHROMOSOMAL LOCATION

Genetic locus: Nlrp10 (mouse) mapping to 7 E3.

SOURCE

NALP10 (S-19) is an affinity purified goat polyclonal antibody raised against a peptide mapping near the C-terminus of NALP10 of mouse origin.

PRODUCT

Each vial contains 200 μ g IgG in 1.0 ml of PBS with < 0.1% sodium azide and 0.1% gelatin.

Blocking peptide available for competition studies, sc-50610 P, (100 μ g peptide in 0.5 ml PBS containing < 0.1% sodium azide and 0.2% BSA).

APPLICATIONS

NALP10 (S-19) is recommended for detection of NALP10 of mouse origin by Western Blotting (starting dilution 1:200, dilution range 1:100-1:1000), immunofluorescence (starting dilution 1:50, dilution range 1:50-1:500), immunohistochemistry (including paraffin-embedded sections) (starting dilution 1:50, dilution range 1:50-1:500) and solid phase ELISA (starting dilution 1:30, dilution range 1:30-1:3000).

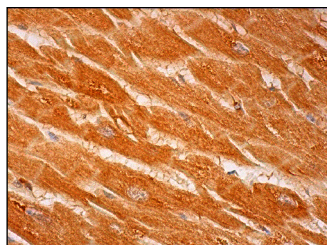
Suitable for use as control antibody for NALP10 siRNA (m): sc-61141, NALP10 shRNA Plasmid (m): sc-61141-SH and NALP10 shRNA (m) Lentiviral Particles: sc-61141-V.

Molecular Weight of NALP10: 75 kDa.

RECOMMENDED SECONDARY REAGENTS

To ensure optimal results, the following support (secondary) reagents are recommended: 1) Western Blotting: use donkey anti-goat IgG-HRP: sc-2020 (dilution range: 1:2000-1:100,000) or Cruz Marker[™] compatible donkey anti-goat IgG-HRP: sc-2033 (dilution range: 1:2000-1:5000), Cruz Marker[™] Molecular Weight Standards: sc-2035, TBS Blotto A Blocking Reagent: sc-2333 and Western Blotting Luminol Reagent: sc-2048. 2) Immunofluorescence: use donkey anti-goat IgG-FITC: sc-2024 (dilution range: 1:100-1:400) or donkey anti-goat IgG-TR: sc-2783 (dilution range: 1:100-1:400) with UltraCruz[™] Mounting Medium: sc-24941. 3) Immunohistochemistry: use ImmunoCruz[™]: sc-2053 or ABC: sc-2023 goat IgG Staining Systems.

DATA



NALP10 (S-19): sc-50610. Immunoperoxidase staining of formalin fixed, paraffin-embedded human heart muscle tissue showing cytoplasmic staining of myocytes.

STORAGE

Store at 4° C, ****DO NOT FREEZE****. Stable for one year from the date of shipment. Non-hazardous. No MSDS required.

RESEARCH USE

For research use only, not for use in diagnostic procedures.

PROTOCOLS

See our web site at www.scbt.com or our catalog for detailed protocols and support products.