

# NALP6 (D-20): sc-50634

## BACKGROUND

The NACHT-, LRR- and PYD-containing protein (NALP) family functions in the regulation of apoptosis and inflammatory signaling pathways. Members of the NALP family (also designated Pyrin-containing APAF1-like proteins) include NALP1 through NALP11. Most short NALPs, such as NALP6, have a C-terminal leucine-rich repeat (LRR) region, an N-terminal pyrin (MEFV) domain (PYD), followed by a NACHT domain and a NACHT-associated domain (NAD). The predicted 892-amino acid NALP6 protein has an N-terminal PYD, a central NACHT-type nucleotide-binding site domain, and a C-terminal domain containing at least 5 LRR motifs. NALP6 is a putative mediator in the activation of CASP1 via ASC (PYD and CARD domain-containing protein) and promotes activation of NF $\kappa$ B. NALP6 binds to ASC with its DAPIN domain. Predominant expression of NALP6 is observed in granulocytes whereas lower levels of expression are detected in T-cells.

## REFERENCES

1. Grenier, J.M., Wang, L., Manji, G.A., Huang, W.J., Al-Garawi, A., Kelly, R., Carlson, A., Merriam, S., Lora, J.M., Briskin, M., DiStefano, P.S. and Bertin, J. 2002. Functional screening of five PYPAF family members identifies PYPAF5 as a novel regulator of NF $\kappa$ B and caspase-1. *FEBS Lett.* 530: 73-78.
2. Online Mendelian Inheritance in Man, OMIM™. 2002. Johns Hopkins University, Baltimore, MD. MIM Number: 606838. World Wide Web URL: <http://www.ncbi.nlm.nih.gov/omim/>
3. Albrecht, M., Domingues, F.S., Schreiber, S. and Lengauer, T. 2003. Identification of mammalian orthologs associates PYPAF5 with distinct functional roles. *FEBS Lett.* 538: 173-177.
4. Drygin, D., Koo, S., Perera, R., Barone, S. and Bennett, C.F. 2005. Induction of oligonucleotides in lung epithelial carcinoma cells. *Oligonucleotides* 15: 105-108.

## CHROMOSOMAL LOCATION

Genetic locus: Nlrp6 (mouse) mapping to 7 F5.

## SOURCE

NALP6 (D-20) is an affinity purified goat polyclonal antibody raised against a peptide mapping within an internal region of NALP6 of mouse origin.

## PRODUCT

Each vial contains 200  $\mu$ g IgG in 1.0 ml of PBS with < 0.1% sodium azide and 0.1% gelatin.

Blocking peptide available for competition studies, sc-50634 P, (100  $\mu$ g peptide in 0.5 ml PBS containing < 0.1% sodium azide and 0.2% BSA).

## STORAGE

Store at 4° C, \*\*DO NOT FREEZE\*\*. Stable for one year from the date of shipment. Non-hazardous. No MSDS required.

## RESEARCH USE

For research use only, not for use in diagnostic procedures.

## APPLICATIONS

NALP6 (D-20) is recommended for detection of NALP6 of mouse and rat origin by Western Blotting (starting dilution 1:200, dilution range 1:100-1:1000), immunoprecipitation [1-2  $\mu$ g per 100-500  $\mu$ g of total protein (1 ml of cell lysate)], immunofluorescence (starting dilution 1:50, dilution range 1:50-1:500), immunohistochemistry (including paraffin-embedded sections) (starting dilution 1:50, dilution range 1:50-1:500) and solid phase ELISA (starting dilution 1:30, dilution range 1:30-1:3000).

NALP6 (D-20) is also recommended for detection of NALP6 in additional species, including canine.

Suitable for use as control antibody for NALP6 siRNA (m): sc-61148, NALP6 shRNA Plasmid (m): sc-61148-SH and NALP6 shRNA (m) Lentiviral Particles: sc-61148-V.

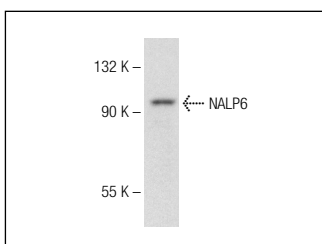
Molecular Weight of NALP6: 99 kDa.

Positive Controls: RBL-1 whole cell lysate: sc-364790.

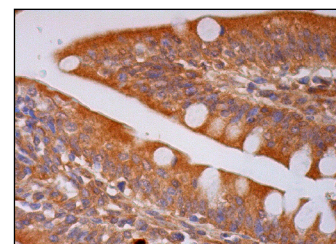
## RECOMMENDED SECONDARY REAGENTS

To ensure optimal results, the following support (secondary) reagents are recommended: 1) Western Blotting: use donkey anti-goat IgG-HRP: sc-2020 (dilution range: 1:2000-1:100,000) or Cruz Marker™ compatible donkey anti-goat IgG-HRP: sc-2033 (dilution range: 1:2000-1:5000), Cruz Marker™ Molecular Weight Standards: sc-2035, TBS Blotto A Blocking Reagent: sc-2333 and Western Blotting Luminol Reagent: sc-2048. 2) Immunoprecipitation: use Protein A/G PLUS-Agarose: sc-2003 (0.5 ml agarose/2.0 ml). 3) Immunofluorescence: use donkey anti-goat IgG-FITC: sc-2024 (dilution range: 1:100-1:400) or donkey anti-goat IgG-TR: sc-2783 (dilution range: 1:100-1:400) with UltraCruz™ Mounting Medium: sc-24941. 4) Immunohistochemistry: use ImmunoCruz™: sc-2053 or ABC: sc-2023 goat IgG Staining Systems.

## DATA



NALP6 (D-20): sc-50634. Western blot analysis of NALP6 expression in RBL-1 whole cell lysate.



NALP6 (D-20): sc-50634. Immunoperoxidase staining of formalin fixed, paraffin-embedded human small intestine tissue showing cytoplasmic staining of glandular cells.

## PROTOCOLS

See our web site at [www.scbt.com](http://www.scbt.com) or our catalog for detailed protocols and support products.