

Rex-1 (C-13): sc-50669

BACKGROUND

Rex-1 (for reduced expression), also designated zinc finger protein 42 (ZFP42), is an acidic zinc finger protein. Rex-1 contains four repeats of the zinc finger nucleic acid-binding motif and a potential acidic activator domain, suggesting that it is a regulatory protein. Rex-1 localizes to the nucleus and is highly expressed in embryonic stem (ES) and undifferentiated murine F9 teratocarcinoma cells. At the transcriptional level, expression of Rex-1 is reduced when F9 cells are induced to differentiate by the addition of retinoic acid (RA), and Rex-1 repression is enhanced by E1A. The Oct-3/4 transcription factor can either activate or repress the Rex-1 promoter, depending on the cellular environment, while Oct-6 can lower the expression of Rex-1.

REFERENCES

- Hosler, B.A., et al. 1990. Expression of REX1, a gene containing zinc finger by retinoic acid in F9 teratocarcinoma cells. *Mol. Cell. Biol.* 9: 5623-5629.
- Hosler, B.A., et al. 1993. An octamer motif contributes to the expression of the retinoic acid-regulated zinc finger gene REX1 (ZFP42) in F9 teratocarcinoma cells. *Mol. Cell. Biol.* 13: 2919-2928.
- Ben-Shushan, E., et al. 1998. REX1, a gene encoding a transcription factor expressed in the early embryo, is regulated via Oct-3/4 and Oct-6 binding to an octamer site and a novel protein, Rox-1, binding to an adjacent site. *Mol. Cell. Biol.* 18: 1866-1878.
- Henderson, J.K., et al. 2002. Preimplantation human embryos and embryonic stem cells show comparable expression of stage-specific embryonic antigens. *Stem Cells* 20: 329-337.
- Zhang, H., et al. 2005. Effect of nicotine on Oct-4 and Rex-1 expression of mouse embryonic stem cells. *Reprod. Toxicol.* 19: 473-478.
- Furue, M., et al. 2005. Leukemia inhibitory factor as an anti-apoptotic mitogen for pluripotent mouse embryonic stem cells in a serum-free medium without feeder cells. *In Vitro Cell. Dev. Biol. Anim.* 41: 19-28.

CHROMOSOMAL LOCATION

Genetic locus: ZFP42 (human) mapping to 4q35.2.

SOURCE

Rex-1 (C-13) is an affinity purified goat polyclonal antibody raised against a peptide mapping at the C-terminus of Rex-1 of human origin.

PRODUCT

Each vial contains 200 µg IgG in 1.0 ml of PBS with < 0.1% sodium azide and 0.1% gelatin. Also available as TransCruz reagent for Gel Supershift and ChIP applications, sc-50669 X, 200 µg/0.1 ml.

Blocking peptide available for competition studies, sc-50669 P, (100 µg peptide in 0.5 ml PBS containing < 0.1% sodium azide and 0.2% BSA).

STORAGE

Store at 4° C, ****DO NOT FREEZE****. Stable for one year from the date of shipment. Non-hazardous. No MSDS required.

APPLICATIONS

Rex-1 (C-13) is recommended for detection of Rex-1 of human origin by Western Blotting (starting dilution 1:200, dilution range 1:100-1:1000), immunoprecipitation [1-2 µg per 100-500 µg of total protein (1 ml of cell lysate)], immunofluorescence (starting dilution 1:50, dilution range 1:50-1:500) and solid phase ELISA (starting dilution 1:30, dilution range 1:30-1:3000).

Suitable for use as control antibody for Rex-1 siRNA (h): sc-61460, Rex-1 shRNA Plasmid (h): sc-61460-SH and Rex-1 shRNA (h) Lentiviral Particles: sc-61460-V.

Rex-1 (C-13) X TransCruz antibody is recommended for Gel Supershift and ChIP applications.

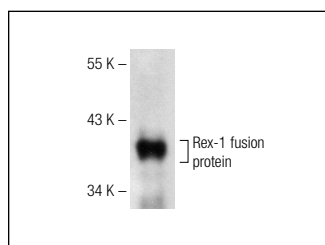
Molecular Weight of Rex-1: 27 kDa.

Positive Controls: PC-3 cell lysate: sc-2220 or Caki-1 cell lysate: sc-2224.

RECOMMENDED SECONDARY REAGENTS

To ensure optimal results, the following support (secondary) reagents are recommended: 1) Western Blotting: use donkey anti-goat IgG-HRP: sc-2020 (dilution range: 1:2000-1:100,000) or Cruz Marker™ compatible donkey anti-goat IgG-HRP: sc-2033 (dilution range: 1:2000-1:5000), Cruz Marker™ Molecular Weight Standards: sc-2035, TBS Blotto A Blocking Reagent: sc-2333 and Western Blotting Luminol Reagent: sc-2048. 2) Immunoprecipitation: use Protein A/G PLUS-Agarose: sc-2003 (0.5 ml agarose/2.0 ml). 3) Immunofluorescence: use donkey anti-goat IgG-FITC: sc-2024 (dilution range: 1:100-1:400) or donkey anti-goat IgG-TR: sc-2783 (dilution range: 1:100-1:400) with UltraCruz™ Mounting Medium: sc-24941.

DATA



Rex-1 (C-13): sc-50669. Western blot analysis of human recombinant Rex-1 fusion protein.

RESEARCH USE

For research use only, not for use in diagnostic procedures.

MONOS
Satisfaction
Guaranteed

Try **Rex-1 (E-11): sc-377095**, our highly recommended monoclonal alternative to Rex-1 (C-13).