

Rex-1 (E-16): sc-50671

BACKGROUND

Rex-1 (for reduced expression), also designated zinc finger protein 42 (ZFP42), is an acidic zinc finger protein. Rex-1 contains four repeats of the zinc finger nucleic acid-binding motif and a potential acidic activator domain, suggesting that it is a regulatory protein. Rex-1 localizes to the nucleus and is highly expressed in embryonic stem (ES) and undifferentiated murine F9 teratocarcinoma cells. At the transcriptional level, expression of Rex-1 is reduced when F9 cells are induced to differentiate by the addition of retinoic acid (RA), and Rex-1 repression is enhanced by E1A. The Oct-3/4 transcription factor can either activate or repress the Rex-1 promoter, depending on the cellular environment, while Oct-6 can lower the expression of Rex-1.

CHROMOSOMAL LOCATION

Genetic locus: ZFP42 (human) mapping to 4q35.2; Zfp42 (mouse) mapping to 8 A4.

SOURCE

Rex-1 (E-16) is an affinity purified goat polyclonal antibody raised against a peptide mapping within an internal region of Rex-1 of human origin.

PRODUCT

Each vial contains 200 µg IgG in 1.0 ml of PBS with < 0.1% sodium azide and 0.1% gelatin. Also available as TransCruz reagent for Gel Supershift and ChIP applications, sc-50671 X, 200 µg/0.1 ml.

Blocking peptide available for competition studies, sc-50671 P, (100 µg peptide in 0.5 ml PBS containing < 0.1% sodium azide and 0.2% BSA).

STORAGE

Store at 4° C, ****DO NOT FREEZE****. Stable for one year from the date of shipment. Non-hazardous. No MSDS required.

APPLICATIONS

Rex-1 (E-16) is recommended for detection of Rex-1 of mouse, rat and human origin by Western Blotting (starting dilution 1:200, dilution range 1:100-1:1000), immunoprecipitation [1-2 µg per 100-500 µg of total protein (1 ml of cell lysate)], immunofluorescence (starting dilution 1:50, dilution range 1:50-1:500) and solid phase ELISA (starting dilution 1:30, dilution range 1:30-1:3000).

Suitable for use as control antibody for Rex-1 siRNA (h): sc-61460, Rex-1 siRNA (m): sc-61461, Rex-1 shRNA Plasmid (h): sc-61460-SH, Rex-1 shRNA Plasmid (m): sc-61461-SH, Rex-1 shRNA (h) Lentiviral Particles: sc-61460-V and Rex-1 shRNA (m) Lentiviral Particles: sc-61461-V.

Rex-1 (E-16) X TransCruz antibody is recommended for Gel Supershift and ChIP applications.

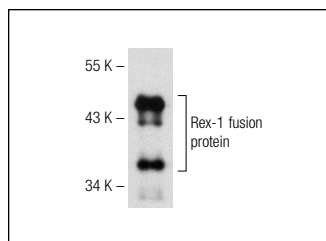
Molecular Weight of Rex-1: 27 kDa.

Positive Controls: Caki-1 cell lysate: sc-2224, F9 cell lysate: sc-2245 or P19 cell lysate: sc-24760.

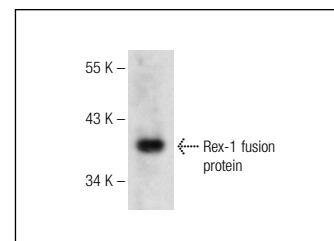
RECOMMENDED SECONDARY REAGENTS

To ensure optimal results, the following support (secondary) reagents are recommended: 1) Western Blotting: use donkey anti-goat IgG-HRP: sc-2020 (dilution range: 1:2000-1:100,000) or Cruz Marker™ compatible donkey anti-goat IgG-HRP: sc-2033 (dilution range: 1:2000-1:5000), Cruz Marker™ Molecular Weight Standards: sc-2035, TBS Blotto A Blocking Reagent: sc-2333 and Western Blotting Luminol Reagent: sc-2048. 2) Immunoprecipitation: use Protein A/G PLUS-Agarose: sc-2003 (0.5 ml agarose/2.0 ml). 3) Immunofluorescence: use donkey anti-goat IgG-FITC: sc-2024 (dilution range: 1:100-1:400) or donkey anti-goat IgG-TR: sc-2783 (dilution range: 1:100-1:400) with UltraCruz™ Mounting Medium: sc-24941.

DATA



Rex-1 (E-16): sc-50671. Western blot analysis of mouse recombinant Rex-1 fusion protein.



Rex-1 (E-16): sc-50671. Western blot analysis of human recombinant Rex-1 fusion protein.

SELECT PRODUCT CITATIONS

1. Naujok, O., et al. 2010. Selective removal of undifferentiated embryonic stem cells from differentiation cultures through HSV1 thymidine kinase and ganciclovir treatment. *Stem Cell Rev.* 6: 450-461.

RESEARCH USE

For research use only, not for use in diagnostic procedures.

PROTOCOLS

See our web site at www.scbt.com or our catalog for detailed protocols and support products.

MONOS
Satisfaction
Guaranteed

Try **Rex-1 (F-1): sc-514643** or **Rex-1 (E-11): sc-377095**, our highly recommended monoclonal alternatives to Rex-1 (E-16).