

CDO (N-17): sc-50720

BACKGROUND

Cell adhesion molecule-related/downregulated by oncogenes (CDO) and BOC (brother of CDO) are members of the immunoglobulin/Fibronectin type III repeat family and act as cell surface receptors. CDO is a component of a cell-surface receptor complex which also contains BOC, NEO1, CTNNB1 and cadherins and which acts as a mediator of cell-cell interactions between muscle cells. CDO and BOC are single pass membrane proteins that play a role in myogenic cell differentiation. Together, CDO and BOC participate in a positive feedback loop with MyoD, a myogenic transcription factor. The 1,242 amino acid rat CDO protein has a 24 residue signal sequence, five Ig V-like repeats, a 25 residue membrane-spanning region, three FNIII-like repeats and a cytoplasmic region of 256 amino acids containing a proline-rich stretch. The human protein contains 1,225 amino acid residues and shares significant homology with the domain structures of the rat protein.

CHROMOSOMAL LOCATION

Genetic locus: CDON (human) mapping to 11q24.2; Cdon (mouse) mapping to 9 A4.

SOURCE

CDO (N-17) is an affinity purified goat polyclonal antibody raised against a peptide mapping at the N-terminus of CDO of human origin.

PRODUCT

Each vial contains 200 µg IgG in 1.0 ml of PBS with < 0.1% sodium azide and 0.1% gelatin.

Blocking peptide available for competition studies, sc-50720 P, (100 µg peptide in 0.5 ml PBS containing < 0.1% sodium azide and 0.2% BSA).

STORAGE

Store at 4° C, ****DO NOT FREEZE****. Stable for one year from the date of shipment. Non-hazardous. No MSDS required.

APPLICATIONS

CDO (N-17) is recommended for detection of CDO of mouse, rat and human origin by Western Blotting (starting dilution 1:200, dilution range 1:100-1:1000), immunoprecipitation [1-2 µg per 100-500 µg of total protein (1 ml of cell lysate)], immunofluorescence (starting dilution 1:50, dilution range 1:50-1:500) and solid phase ELISA (starting dilution 1:30, dilution range 1:30-1:3000).

CDO (N-17) is also recommended for detection of CDO in additional species, including equine.

Suitable for use as control antibody for CDO siRNA (h): sc-60345, CDO siRNA (m): sc-60346, CDO shRNA Plasmid (h): sc-60345-SH, CDO shRNA Plasmid (m): sc-60346-SH, CDO shRNA (h) Lentiviral Particles: sc-60345-V and CDO shRNA (m) Lentiviral Particles: sc-60346-V.

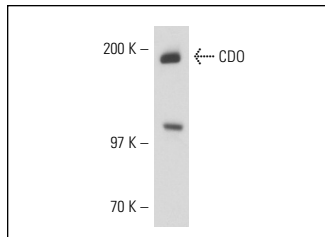
Molecular Weight of CDO: 160 kDa.

Positive Controls: C6 whole cell lysate: sc-364373.

RECOMMENDED SECONDARY REAGENTS

To ensure optimal results, the following support (secondary) reagents are recommended: 1) Western Blotting: use donkey anti-goat IgG-HRP: sc-2020 (dilution range: 1:2000-1:100,000) or Cruz Marker™ compatible donkey anti-goat IgG-HRP: sc-2033 (dilution range: 1:2000-1:5000), Cruz Marker™ Molecular Weight Standards: sc-2035, TBS Blotto A Blocking Reagent: sc-2333 and Western Blotting Luminol Reagent: sc-2048. 2) Immunoprecipitation: use Protein A/G PLUS-Agarose: sc-2003 (0.5 ml agarose/2.0 ml). 3) Immunofluorescence: use donkey anti-goat IgG-FITC: sc-2024 (dilution range: 1:100-1:400) or donkey anti-goat IgG-TR: sc-2783 (dilution range: 1:100-1:400) with UltraCruz™ Mounting Medium: sc-24941.

DATA



CDO (N-17): sc-50720. Western blot analysis of CDO expression in C6 whole cell lysate.

RESEARCH USE

For research use only, not for use in diagnostic procedures.

PROTOCOLS

See our web site at www.scbt.com or our catalog for detailed protocols and support products.


 MONOS
Satisfaction
Guaranteed

Try **CDO (A-1): sc-377232**, our highly recommended monoclonal alternative to CDO (N-17).