

## LBP-9 (N-20): sc-50831

### BACKGROUND

The long terminal repeat binding protein-1 (LBP-1) mammalian family of transcription factors are proteins that stimulate transcription in HeLa cells from the major late promoter of simian virus 40 *in vitro*. The two related human LBP-1 genes are TFCP2A, which encodes the alternatively spliced transcripts LBP-1a and LBP-1b, and TFCP2C, which encodes LBP-1c and LBP-1d. LBP-9, also designated transcription factor CP2-like 1 (TFCP2L1), is a protein of 479 amino acids. LBP-9 shows 83% sequence homology with LBP-1b and acts as a suppressor factor inhibiting the stimulation effect of LBP-1b. LBP-9 may regulate the P450scc reporter activity through the -155/-131 element.

### REFERENCES

- Mukhamadieva, G.A. 1975. Functional state of the stomach in patients with diffuse toxic goiter and hypothyroidism. *Vrach. Delo* 6: 22-25.
- Yoon, J.B., Li, G. and Roeder, R.G. 1994. Characterization of a family of related cellular transcription factors which can modulate human immunodeficiency virus type 1 transcription *in vitro*. *Mol. Cell. Biol.* 14: 1776-1785.
- Huang, N. and Miller, W.L. 2000. Cloning of factors related to HIV-inducible LBP proteins that regulate steroidogenic factor-1-independent human placental transcription of the cholesterol side-chain cleavage enzyme, P450scc. *J. Biol. Chem.* 275: 2852-2858.
- Rodda, S., Sharma, S., Scherer, M., Chapman, G. and Rathjen, P. 2001. CRTR-1, a developmentally regulated transcriptional repressor related to the CP2 family of transcription factors. *J. Biol. Chem.* 276: 3324-3332.
- Huang, N. and Miller, W.L. 2005. LBP proteins modulate SF1-independent expression of P450scc in human placental JEG-3 cells. *Mol. Endocrinol.* 19: 409-420.
- Sato, F., Yasumoto, K., Kimura, K., Numayama-Tsuruta, K. and Sogawa, K. 2005. Heterodimerization with LBP-1b is necessary for nuclear localization of LBP-1a and LBP-1c. *Genes Cells* 10: 861-870.

### CHROMOSOMAL LOCATION

Genetic locus: TFCP2L1 (human) mapping to 2q14.2; Tfc2l1 (mouse) mapping to 1 E2.3.

### SOURCE

LBP-9 (N-20) is an affinity purified goat polyclonal antibody raised against a peptide mapping at the N-terminus of LBP-9 of human origin.

### PRODUCT

Each vial contains 200 µg IgG in 1.0 ml of PBS with < 0.1% sodium azide and 0.1% gelatin.

Blocking peptide available for competition studies, sc-50831 P, (100 µg peptide in 0.5 ml PBS containing < 0.1% sodium azide and 0.2% BSA).

### STORAGE

Store at 4° C, **\*\*DO NOT FREEZE\*\***. Stable for one year from the date of shipment. Non-hazardous. No MSDS required.

### APPLICATIONS

LBP-9 (N-20) is recommended for detection of LBP-9 of mouse, rat and human origin by Western Blotting (starting dilution 1:200, dilution range 1:100-1:1000), immunoprecipitation [1-2 µg per 100-500 µg of total protein (1 ml of cell lysate)], immunofluorescence (starting dilution 1:50, dilution range 1:50-1:500) and solid phase ELISA (starting dilution 1:30, dilution range 1:30-1:3000).

LBP-9 (N-20) is also recommended for detection of LBP-9 in additional species, including bovine, porcine and avian.

Suitable for use as control antibody for LBP-9 siRNA (h): sc-60924, LBP-9 siRNA (m): sc-60925, LBP-9 shRNA Plasmid (h): sc-60924-SH, LBP-9 shRNA Plasmid (m): sc-60925-SH, LBP-9 shRNA (h) Lentiviral Particles: sc-60924-V and LBP-9 shRNA (m) Lentiviral Particles: sc-60925-V.

LBP-9 (N-20) X TransCruz antibody is recommended for Gel Supershift and ChIP applications.

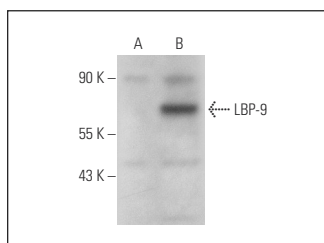
Molecular Weight of LBP-9: 48 kDa.

Positive Controls: LBP-9 (h): 293T Lysate: sc-369957.

### RECOMMENDED SECONDARY REAGENTS

To ensure optimal results, the following support (secondary) reagents are recommended: 1) Western Blotting: use donkey anti-goat IgG-HRP: sc-2020 (dilution range: 1:2000-1:100,000) or Cruz Marker™ compatible donkey anti-goat IgG-HRP: sc-2033 (dilution range: 1:2000-1:5000), Cruz Marker™ Molecular Weight Standards: sc-2035, TBS Blotto A Blocking Reagent: sc-2333 and Western Blotting Luminol Reagent: sc-2048. 2) Immunoprecipitation: use Protein A/G PLUS-Agarose: sc-2003 (0.5 ml agarose/2.0 ml). 3) Immunofluorescence: use donkey anti-goat IgG-FITC: sc-2024 (dilution range: 1:100-1:400) or donkey anti-goat IgG-TR: sc-2783 (dilution range: 1:100-1:400) with UltraCruz™ Mounting Medium: sc-24941.

### DATA



LBP-9 (N-20): sc-50831. Western blot analysis of LBP-9 expression in non-transfected: sc-117752 (A) and human LBP-9 transfected: sc-369957 (B) 293T whole cell lysates.

### RESEARCH USE

For research use only, not for use in diagnostic procedures.

### PROTOCOLS

See our web site at [www.scbt.com](http://www.scbt.com) or our catalog for detailed protocols and support products.