

# MASP-1 (C-20): sc-50839

## BACKGROUND

Mannose (or mannan)-binding lectin (MBL), also known as serum mannose-binding protein (MBP), initiates the lectin branch of the innate immune response by binding to the surface of potentially pathogenic microorganisms and initiating complement fixation through an N-terminal collagen-like domain. MBL is a key component in immune response in that it can directly trigger neutralization of invading microorganisms by an Ab-independent mechanism. Mutations of human MBL are associated with immunodeficiency resulting from a reduction in the ability of the mutant MBL to initiate complement fixation. In human, three types of MBL-associated serine proteases, MASP-1, MASP-2 and MASP-3, and a truncated form of MASP-2 (small MBL-associated protein; sMAP or MASP-2) complex with MBL to activate the lectin pathway of the complement system. MASP-3 is an alternatively spliced product from the MASP-1 gene. The heavy/A chains are identical between MASP-1 and MASP-3 but the light/B chains are entirely different. Activated MASPs subsequently cleave and activate downstream components of the complement pathway.

## REFERENCES

1. Heise, C., et al. 2000. Impaired secretion of rat mannose-binding protein resulting from mutations in the collagen-like domain. *J. Immunol.* 165: 1403-1409.
2. Matsushita, M., et al. 2000. Proteolytic activities of two types of mannose-binding lectin-associated serine protease. *J. Immunol.* 165: 2637-2642.
3. Chen, C.B., et al. 2001. Stoichiometry of complexes between mannose-binding protein and its associated serine proteases: Defining functional units for complement activation. *J. Biol. Chem.* 276: 25894-25902.
4. Endo, M., et al. 2001. Regulation of *in situ* complement activation via the lectin pathway in patients with IgA nephropathy. *Clin. Nephrol.* 55: 185-191.

## CHROMOSOMAL LOCATION

Genetic locus: MASP1 (human) mapping to 3q27.3; Masp1 (mouse) mapping to 16 B1.

## SOURCE

MASP-1 (C-20) is an affinity purified goat polyclonal antibody raised against a peptide mapping at the C-terminus of the processed light chain region of MASP-1 of human origin.

## PRODUCT

Each vial contains 200 µg IgG in 1.0 ml of PBS with < 0.1% sodium azide and 0.1% gelatin.

Blocking peptide available for competition studies, sc-50839 P, (100 µg peptide in 0.5 ml PBS containing < 0.1% sodium azide and 0.2% BSA).

## STORAGE

Store at 4° C, **\*\*DO NOT FREEZE\*\***. Stable for one year from the date of shipment. Non-hazardous. No MSDS required.

## APPLICATIONS

MASP-1 (C-20) is recommended for detection of MASP-1 light chain region of mouse, rat and human origin by Western Blotting (starting dilution 1:200, dilution range 1:100-1:1000), immunoprecipitation [1-2 µg per 100-500 µg of total protein (1 ml of cell lysate)], immunofluorescence (starting dilution 1:50, dilution range 1:50-1:500) and solid phase ELISA (starting dilution 1:30, dilution range 1:30-1:3000).

MASP-1 (C-20) is also recommended for detection of MASP-1 light chain region in additional species, including equine, canine and porcine.

Suitable for use as control antibody for MASP-1 siRNA (h): sc-45349, MASP-1 siRNA (m): sc-45350, MASP-1 shRNA Plasmid (h): sc-45349-SH, MASP-1 shRNA Plasmid (m): sc-45350-SH, MASP-1 shRNA (h) Lentiviral Particles: sc-45349-V and MASP-1 shRNA (m) Lentiviral Particles: sc-45350-V.

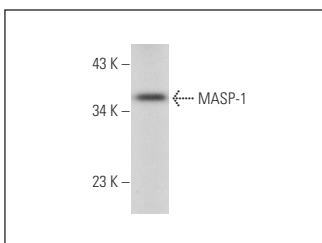
Molecular Weight of MASP-1: 35 kDa.

Positive Controls: mouse liver extract: sc-2256.

## RECOMMENDED SECONDARY REAGENTS

To ensure optimal results, the following support (secondary) reagents are recommended: 1) Western Blotting: use donkey anti-goat IgG-HRP: sc-2020 (dilution range: 1:2000-1:100,000) or Cruz Marker™ compatible donkey anti-goat IgG-HRP: sc-2033 (dilution range: 1:2000-1:5000), Cruz Marker™ Molecular Weight Standards: sc-2035, TBS Blotto A Blocking Reagent: sc-2333 and Western Blotting Luminol Reagent: sc-2048. 2) Immunoprecipitation: use Protein A/G PLUS-Agarose: sc-2003 (0.5 ml agarose/2.0 ml). 3) Immunofluorescence: use donkey anti-goat IgG-FITC: sc-2024 (dilution range: 1:100-1:400) or donkey anti-goat IgG-TR: sc-2783 (dilution range: 1:100-1:400) with UltraCruz™ Mounting Medium: sc-24941.

## DATA



MASP-1 (C-20): sc-50839. Western blot analysis of MASP-1 expression in mouse liver tissue extract.

## RESEARCH USE

For research use only, not for use in diagnostic procedures.

## PROTOCOLS

See our web site at [www.scbt.com](http://www.scbt.com) or our catalog for detailed protocols and support products.