

PFK-2 car (Y-13): sc-50956

BACKGROUND

Phosphofructokinases (PFK) are regulatory glycolytic enzymes that convert fructose 6-phosphate and ATP into fructose 1,6-bisphosphate (through PFK-1), fructose 2,6-bisphosphate (through PFK-2), and ADP. Human PFK-1 is tetrameric and isoenzymes include, PFK-1 muscle (PFKM, PFK-A), PFK-1 liver (PFKL, PFK-B), and PFK-1 platelet (PFKP, PFK-C, PFKF). PFK-1 is inhibited by ATP and citrate (from the tricarboxylic acid cycle). PFK-1 undergoes activation in the presence of elevated AMP. The most potent activator is fructose-2,6-bisphosphate, which is produced by PFK-2 from the same substrate, fructose 6-phosphate. PFK-2 is bifunctional and a key regulator for PFK-1. PFK-2 catalyzes the synthesis of fructose-2,6-bisphosphate, and contains fructose-2,6-bisphosphatase activity that catalyzes the degradation of fructose-2,6-bisphosphate. PFK-2 is dimeric and isoenzymes include PFK-2 liver (PFKFB1, PFRX), PFK-2 cardiac (PFKFB2), PFK-2 placental (PFKFB3, inducible PFK-2) and PFK-2 testis (PFKFB4).

CHROMOSOMAL LOCATION

Genetic locus: PFKFB2 (human) mapping to 1q32.2; Pfkfb2 (mouse) mapping to 1 E4.

SOURCE

PFK-2 car (Y-13) is an affinity purified goat polyclonal antibody raised against a peptide mapping near the N-terminus of PFK-2 car of human origin.

PRODUCT

Each vial contains 200 µg IgG in 1.0 ml of PBS with < 0.1% sodium azide and 0.1% gelatin.

Blocking peptide available for competition studies, sc-50956 P, (100 µg peptide in 0.5 ml PBS containing < 0.1% sodium azide and 0.2% BSA).

STORAGE

Store at 4° C, ****DO NOT FREEZE****. Stable for one year from the date of shipment. Non-hazardous. No MSDS required.

APPLICATIONS

PFK-2 car (Y-13) is recommended for detection of PFK-2 car of mouse, rat and human origin by Western Blotting (starting dilution 1:200, dilution range 1:100-1:1000), immunoprecipitation [1-2 µg per 100-500 µg of total protein (1 ml of cell lysate)], immunofluorescence (starting dilution 1:50, dilution range 1:50-1:500), immunohistochemistry (including paraffin-embedded sections) (starting dilution 1:50, dilution range 1:50-1:500) and solid phase ELISA (starting dilution 1:30, dilution range 1:30-1:3000).

PFK-2 car (Y-13) is also recommended for detection of PFK-2 car in additional species, including equine, canine, bovine and porcine.

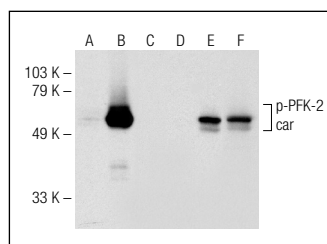
Suitable for use as control antibody for PFK-2 car siRNA (h): sc-44675, PFK-2 car siRNA (m): sc-44676, PFK-2 car shRNA Plasmid (h): sc-44675-SH, PFK-2 car shRNA Plasmid (m): sc-44676-SH, PFK-2 car shRNA (h) Lentiviral Particles: sc-44675-V and PFK-2 car shRNA (m) Lentiviral Particles: sc-44676-V.

Molecular Weight of PFK-2 car: 58 kDa.

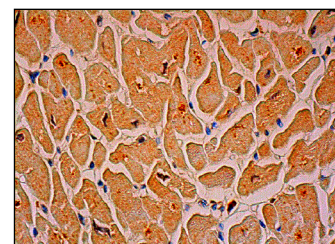
RECOMMENDED SECONDARY REAGENTS

To ensure optimal results, the following support (secondary) reagents are recommended: 1) Western Blotting: use donkey anti-goat IgG-HRP: sc-2020 (dilution range: 1:2000-1:100,000) or Cruz Marker™ compatible donkey anti-goat IgG-HRP: sc-2033 (dilution range: 1:2000-1:5000), Cruz Marker™ Molecular Weight Standards: sc-2035, TBS Blotto A Blocking Reagent: sc-2333 and Western Blotting Luminol Reagent: sc-2048. 2) Immunoprecipitation: use Protein A/G PLUS-Agarose: sc-2003 (0.5 ml agarose/2.0 ml). 3) Immunofluorescence: use donkey anti-goat IgG-FITC: sc-2024 (dilution range: 1:100-1:400) or donkey anti-goat IgG-TR: sc-2783 (dilution range: 1:100-1:400) with UltraCruz™ Mounting Medium: sc-24941. 4) Immunohistochemistry: use ImmunoCruz™: sc-2053 or ABC: sc-2023 goat IgG Staining Systems.

DATA



Western blot analysis of PFK-2 car phosphorylation in non-transfected: sc-117752 (A,D), untreated mouse PFK-2 car transfected: sc-122507 (B,E) and lambda protein phosphatase (sc-200312A) treated mouse PFK-2 car transfected: sc-122507 (C,F) 293T whole cell lysates. Antibodies tested include p-PFK-2 car (Ser 483): sc-32967 (A,B,C) and PFK-2 car (Y-13): sc-50956 (D,E,F).



PFK-2 car (Y-13): sc-50956. Immunoperoxidase staining of formalin fixed, paraffin-embedded human heart muscle tissue showing cytoplasmic staining of myocytes.

RESEARCH USE

For research use only, not for use in diagnostic procedures.

PROTOCOLS

See our web site at www.scbt.com or our catalog for detailed protocols and support products.

MONOS
Satisfaction
Guaranteed

Try **PFK-2 car (D-1): sc-377416** or **PFK-2 car (G-7): sc-515528**, our highly recommended monoclonal alternatives to PFK-2 car (Y-13).