

CLIC1 (C-14): sc-51048

BACKGROUND

Chloride intracellular channel 1 (CLIC1), also referred to as NCC27, is a member of the highly conserved family of chloride ion channels that function in both soluble and integral membrane forms. CLIC1 is a monomeric protein that contains a redox-active site similar to glutaredoxin; it functions as an anion-selective channel. CLIC1 forms a dimer when oxidized and is then able to form chloride ion channels in bilayers and vesicles, whereas a reducing environment prevents this from occurring. Insulin concentration also plays a role in CLIC1 regulation, and the hormone may cause a subnuclear relocalization of CLIC1. CLIC1 is associated with macrophage activation; a downregulation of CLIC1 function prevents TNF α release induced by β -Amyloid protein (A- β) stimulation. This suggests a role for CLIC1 in several neurodegenerative processes, such as Alzheimer's disease, a syndrome characterized by an accumulation of A- β .

REFERENCES

- Harrop, S.J., DeMaere, M.Z., Fairlie, W.D., Reztsova, T., Valenzuela, S.M., Mazzanti, M., Tonini, R., Qiu, M.R., Jankova, L., Warton, K., Bauskin, A.R., Wu, W.M., Pankhurst, S., Campbell, T.J., Breit, S.N. and Curmi, P.M. 2001. Crystal structure of a soluble form of the intracellular chloride ion channel CLIC1 (NCC27) at 1.4-Å resolution. *J. Biol. Chem.* 276: 44993-45000.
- Tulk, B.M., Kapadia, S. and Edwards, J.C. 2002. CLIC1 inserts from the aqueous phase into phospholipid membranes, where it functions as an anion channel. *Am. J. Physiol., Cell Physiol.* 282: C1103-1112.
- Warton, K., Tonini, R., Fairlie, W.D., Matthews, J.M., Valenzuela, S.M., Qiu, M.R., Wu, W.M., Pankhurst, S., Bauskin, A.R., Harrop, S.J., Campbell, T.J., Curmi, P.M., Breit, S.N. and Mazzanti, M. 2002. Recombinant CLIC1 (NCC27) assembles in lipid bilayers via a pH-dependent two-state process to form chloride ion channels with identical characteristics to those observed in Chinese hamster ovary cells expressing CLIC1. *J. Biol. Chem.* 277(29): 26003-26011.
- Littler, D.R., Harrop, S.J., Fairlie, W.D., Brown, L.J., Pankhurst, G.J., Pankhurst, S., DeMaere, M.Z., Campbell, T.J., Bauskin, A.R., Tonini, R., Mazzanti, M., Breit, S.N. and Curmi, P.M. 2004. The intracellular chloride ion channel protein CLIC1 undergoes a redox-controlled structural transition. *J. Biol. Chem.* 279: 9298-9305.
- Myers, K., Somanath, P.R., Berryman, M. and Vijayaraghavan, S. 2004. Identification of chloride intracellular channel proteins in spermatozoa. *FEBS Lett.* 566: 136-140.
- Novarino, G., Fabrizi, C., Tonini, R., Denti, M.A., Malchiodi-Albedi, F., Lauro, G.M., Sacchetti, B., Paradisi, S., Ferroni, A., Curmi, P.M., Breit, S.N. and Mazzanti, M. 2004. Involvement of the intracellular ion channel CLIC1 in microglia-media neurotoxicity. *J. Neurosci.* 24: 5322-5330.

CHROMOSOMAL LOCATION

Genetic locus: CLIC1 (human) mapping to 6p21.33; Clc1 (mouse) mapping to 17 B1.

RESEARCH USE

For research use only, not for use in diagnostic procedures.

SOURCE

CLIC1 (C-14) is an affinity purified goat polyclonal antibody raised against a peptide mapping near the C-terminus of CLIC1 of human origin.

PRODUCT

Each vial contains 200 μ g IgG in 1.0 ml of PBS with < 0.1% sodium azide and 0.1% gelatin.

Blocking peptide available for competition studies, sc-51048 P, (100 μ g peptide in 0.5 ml PBS containing < 0.1% sodium azide and 0.2% BSA).

APPLICATIONS

CLIC1 (C-14) is recommended for detection of CLIC1 of mouse, rat and human origin by Western Blotting (starting dilution 1:200, dilution range 1:100-1:1000), immunoprecipitation [1–2 μ g per 100–500 μ g of total protein (1 ml of cell lysate)], immunofluorescence (starting dilution 1:50, dilution range 1:50-1:500) and solid phase ELISA (starting dilution 1:30, dilution range 1:30-1:3000).

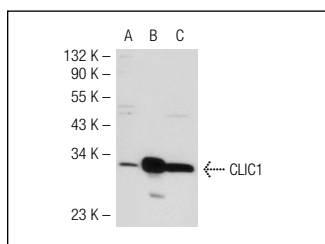
CLIC1 (C-14) is also recommended for detection of CLIC1 in additional species, including equine and canine.

Suitable for use as control antibody for CLIC1 siRNA (h): sc-60400, CLIC1 siRNA (m): sc-60401, CLIC1 shRNA Plasmid (h): sc-60400-SH, CLIC1 shRNA Plasmid (m): sc-60401-SH, CLIC1 shRNA (h) Lentiviral Particles: sc-60400-V and CLIC1 shRNA (m) Lentiviral Particles: sc-60401-V.

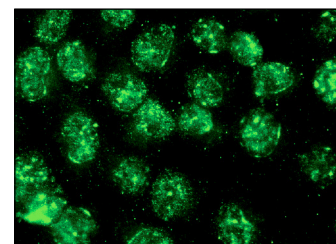
Molecular Weight of CLIC1: 27 kDa.

Positive Controls: CLIC1 (h): 293T Lysate: sc-116942

DATA



CLIC1 (C-14): sc-51048. Western blot analysis of CLIC1 expression in non-transfected 293T: sc-117752 (A), human CLIC1 transfected 293T: sc-116942 (B) and THP-1 (C) whole cell lysates.



CLIC1 (C-14): sc-51048. Immunofluorescence staining of methanol-fixed HeLa cells showing nuclear localization.

STORAGE

Store at 4° C, **DO NOT FREEZE**. Stable for one year from the date of shipment. Non-hazardous. No MSDS required.

MONOS
Satisfaction
Guaranteed

Try **CLIC1 (F-9): sc-374202** or **CLIC1 (B-5): sc-271051**, our highly recommended monoclonal alternatives to CLIC1 (C-14).