

Glyoxalase II (G-20): sc-51092

BACKGROUND

The glyoxal pathway plays a role in the detoxification of glucose degradation products (GDP). Glyoxalase I and Glyoxalase II (also designated hydroxyacyl glutathione hydrolase or HAGH) are members of the Glyoxalase family. The Glyoxalase II enzyme is a thiolesterase that catalyzes the hydrolysis of S-D-lactoyl-glutathione to form reduced glutathione and D-lactic acid. It exists only as a monomer and binds two zinc ions per subunit. Glyoxalase II contains 260 amino acids. It is detected in the mitochondria and cytosol of mammals. Both Glyoxalase I and Glyoxalase II are detected at a higher activity level in breast cancer tissues than with matched unaffected tissues. This suggests that Glyoxalase inhibitor drugs may be effective in the treatment of cancer.

CHROMOSOMAL LOCATION

Genetic locus: HAGH (human) mapping to 16p13.3; Hagh (mouse) mapping to 17 A3.3.

SOURCE

Glyoxalase II (G-20) is an affinity purified goat polyclonal antibody raised against a peptide mapping within an internal region of Glyoxalase II of human origin.

PRODUCT

Each vial contains 200 µg IgG in 1.0 ml of PBS with < 0.1% sodium azide and 0.1% gelatin.

Blocking peptide available for competition studies, sc-51092 P, (100 µg peptide in 0.5 ml PBS containing < 0.1% sodium azide and 0.2% BSA).

STORAGE

Store at 4° C, ****DO NOT FREEZE****. Stable for one year from the date of shipment. Non-hazardous. No MSDS required.

APPLICATIONS

Glyoxalase II (G-20) is recommended for detection of Glyoxalase II of mouse, rat and human origin by Western Blotting (starting dilution 1:200, dilution range 1:100-1:1000), immunoprecipitation [1-2 µg per 100-500 µg of total protein (1 ml of cell lysate)], immunofluorescence (starting dilution 1:50, dilution range 1:50-1:500) and solid phase ELISA (starting dilution 1:30, dilution range 1:30-1:3000).

Glyoxalase II (G-20) is also recommended for detection of Glyoxalase II in additional species, including equine, canine, bovine and avian.

Suitable for use as control antibody for Glyoxalase II siRNA (h): sc-60705, Glyoxalase II siRNA (m): sc-60706, Glyoxalase II shRNA Plasmid (h): sc-60705-SH, Glyoxalase II shRNA Plasmid (m): sc-60706-SH, Glyoxalase II shRNA (h) Lentiviral Particles: sc-60705-V and Glyoxalase II shRNA (m) Lentiviral Particles: sc-60706-V.

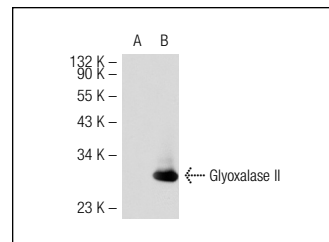
Molecular Weight of Glyoxalase II: 29 kDa.

Positive Controls: Glyoxalase II (m2): 293T Lysate: sc-120531, Glyoxalase II (h3): 293T Lysate: sc-170335 or Hep G2 cell lysate: sc-2227.

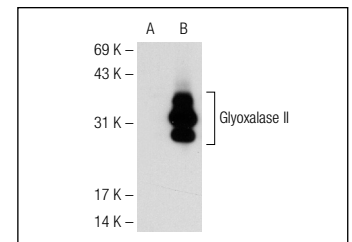
RECOMMENDED SECONDARY REAGENTS

To ensure optimal results, the following support (secondary) reagents are recommended: 1) Western Blotting: use donkey anti-goat IgG-HRP: sc-2020 (dilution range: 1:2000-1:100,000) or Cruz Marker™ compatible donkey anti-goat IgG-HRP: sc-2033 (dilution range: 1:2000-1:5000), Cruz Marker™ Molecular Weight Standards: sc-2035, TBS Blotto A Blocking Reagent: sc-2333 and Western Blotting Luminol Reagent: sc-2048. 2) Immunoprecipitation: use Protein A/G PLUS-Agarose: sc-2003 (0.5 ml agarose/2.0 ml). 3) Immunofluorescence: use donkey anti-goat IgG-FITC: sc-2024 (dilution range: 1:100-1:400) or donkey anti-goat IgG-TR: sc-2783 (dilution range: 1:100-1:400) with UltraCruz™ Mounting Medium: sc-24941.

DATA



Glyoxalase II (G-20): sc-51092. Western blot analysis of Glyoxalase II expression in non-transfected: sc-117752 (A) and mouse Glyoxalase II transfected: sc-120531 (B) 293T whole cell lysates.



Glyoxalase II (G-20): sc-51092. Western blot analysis of Glyoxalase II expression in non-transfected: sc-117752 (A) and human Glyoxalase II transfected: sc-170335 (B) 293T whole cell lysates.

RESEARCH USE

For research use only, not for use in diagnostic procedures.

PROTOCOLS

See our web site at www.scbt.com or our catalog for detailed protocols and support products.


 MONOS
Satisfaction
Guaranteed

Try **Glyoxalase II (F-9): sc-166781** or **Glyoxalase II (F-12): sc-365025**, our highly recommended monoclonal alternatives to Glyoxalase II (G-20).