

# MTMR7 (S-13): sc-51145

## BACKGROUND

Myotubularin and the myotubularin-related proteins (MTMR1-9) belong to a highly conserved family of eukaryotic phosphatases. They are protein tyrosine phosphatases that utilize inositol phospholipids, rather than phosphoproteins, as substrates. MTMR family members hydrolyze both phosphatidylinositol 3-phosphate (PtdIns3P) and PtdIns(3,5)P<sub>2</sub>. MTMR2 interacts with MTMR5, an inactive family member that increases the enzymatic activity of MTMR2 and dictates its subcellular localization. Mutations in MTMR2 cause autosomal recessive Charcot-Marie-Tooth type 4B1 (CMT4B1), which is characterized by reduced nerve conduction velocities, focally folded myelin sheaths and demyelination. MTMR3 and MTMR4 can either interact with each other or self-associate. MTMR6 regulates the activity of the calcium-activated potassium channel 3.1. MTMR9 regulates the activity of MTMR7 and MTMR8.

## REFERENCES

- Laporte, J., Guiraud-Chaumeil, C., Vincent, M.C., Mandel, J.L., Tanner, S.M., Liechti-Gallati, S., Wallgren-Pettersson, C., Dahl, N., Kress, W., Bolhuis, P.A., Fardeau, M., Samson, F. and Bertini, E. 1997. Mutations in the MTM1 gene implicated in X-linked myotubular myopathy. *Hum. Mol. Genet.* 6: 1505-1511.
- Blondeau, F., Laporte, J., Bodin, S., Superti-Furga, G., Payrastre, B. and Mandel, J.L. 2000. Myotubularin, a phosphatase deficient in myotubular myopathy, acts on phosphatidylinositol 3-kinase and phosphatidylinositol 3-phosphate pathway. *Hum. Mol. Genet.* 9: 2223-2229.
- Kim, S.A., Vacratsis, P.O., Firestein, R., Cleary, M.L. and Dixon, J.E. 2003. Regulation of myotubularin-related MTMR2 phosphatidylinositol phosphatase by MTMR5, a catalytically inactive phosphatase. *Proc. Natl. Acad. Sci. USA* 100: 4492-4497.
- Mochizuki, Y. and Majerus, P.W. 2003. Characterization of myotubularin-related protein 7 and its binding partner, myotubularin-related protein 9. *Proc. Natl. Acad. Sci. USA* 100: 9768-9773.
- Srivastava, S., Choudhury, P., Li, Z., Liu, G., Nadkarni, V., Ko, K., Coetzee, W.A. and Skolnik, E.Y. 2005. Phosphatidylinositol 3-phosphate indirectly activates KCa3.1 via 14 amino acids in the carboxy terminus of KCa3.1. *Mol. Biol. Cell.* 17: 146-154.
- Lorenzo, O., Urbe, S. and Clague, M.J. 2006. Systematic analysis of myotubularins: heteromeric interactions, subcellular localisation and endosomelated functions. *J. Cell. Sci.* 119 (Pt 14): 2953-2959.
- Berger, P., Berger, I., Schaffitzel, C., Tersar, K., Volkmer, B. and Suter, U. 2006. Multi-level regulation of myotubularin-related protein-2 phosphatase activity by myotubularin-related protein-13/SET-binding factor-2. *Hum. Mol. Genet.* 15: 569-579.

## CHROMOSOMAL LOCATION

Genetic locus: MTMR7 (human) mapping to 8p22; Mtmr7 (mouse) mapping to 8 B1.2.

## SOURCE

MTMR7 (S-13) is an affinity purified goat polyclonal antibody raised against a peptide mapping within an internal region of MTMR7 of human origin.

## PRODUCT

Each vial contains 200 µg IgG in 1.0 ml of PBS with < 0.1% sodium azide and 0.1% gelatin.

Blocking peptide available for competition studies, sc-51145 P, (100 µg peptide in 0.5 ml PBS containing < 0.1% sodium azide and 0.2% BSA).

## APPLICATIONS

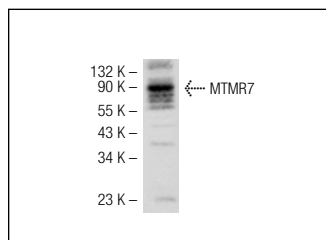
MTMR7 (S-13) is recommended for detection of MTMR7 of mouse, rat and human origin by Western Blotting (starting dilution 1:200, dilution range 1:100-1:1000), immunoprecipitation [1-2 µg per 100-500 µg of total protein (1 ml of cell lysate)], immunofluorescence (starting dilution 1:50, dilution range 1:50-1:500) and solid phase ELISA (starting dilution 1:30, dilution range 1:30-1:3000).

MTMR7 (S-13) is also recommended for detection of MTMR7 in additional species, including equine and canine.

Suitable for use as control antibody for MTMR7 siRNA (h): sc-61095, MTMR7 siRNA (m): sc-61096, MTMR7 shRNA Plasmid (h): sc-61095-SH, MTMR7 shRNA Plasmid (m): sc-61096-SH, MTMR7 shRNA (h) Lentiviral Particles: sc-61095-V and MTMR7 shRNA (m) Lentiviral Particles: sc-61096-V.

Molecular Weight of MTMR7: 85 kDa.

## DATA



MTMR7 (S-13): sc-51145. Western blot analysis of MTMR7 expression in NIH/3T3 whole cell lysate.

## STORAGE

Store at 4° C, **\*\*DO NOT FREEZE\*\***. Stable for one year from the date of shipment. Non-hazardous. No MSDS required.

## RESEARCH USE

For research use only, not for use in diagnostic procedures.

## PROTOCOLS

See our web site at [www.scbt.com](http://www.scbt.com) or our catalog for detailed protocols and support products.