

IL-1F6 (N-15): sc-51302

BACKGROUND

IL-1 (Interleukin-1) is a cytokine responsible for initiating a variety of activities through the activation of transcription factors, NF κ B and AP-1, thereby promoting host response to injury or infection. The IL-1 superfamily is comprised of several ligands and receptors. IL-1F6, also known as interleukin-1 family member 6 (IL-1 ϵ F6) or interleukin-1 ϵ (IL-1 ϵ), is a secreted ligand belonging to this superfamily. IL-1F6 is expressed in a variety of tissues, including lymph node, spleen, thymus, leukocytes, tonsil, fetal brain and bone marrow. It exists as a nitroprotein, post-translationally modified with a nitro group on tyrosine residue 96. IL-1F6 activates the IL-1Rrp2 and IL-1RAcP-dependent pathway leading to NF κ B activation. Similar to other family members, IL-1F6 can be regulated by bacterial lipopolysaccharide (LPS).

REFERENCES

- Smith, D.E., et al. 2000. Four new members expand the interleukin-1 superfamily. *J. Biol. Chem.* 275: 1169-1175.
- Hoever, G., et al. 2004. Infection of cultured intestinal epithelial cells with severe acute respiratory syndrome coronavirus. *Cell. Mol. Life Sci.* 61: 2100-2112.
- Towne, J.E., et al. 2004. Interleukin (IL)-1F6, IL-1F8, and IL-1F9 signal through IL-1Rrp2 and IL-1RAcP to activate the pathway leading to NF κ B and MAPKs. *J. Biol. Chem.* 279: 13677-13688.
- Zhan, X. and Desiderio, D.M. 2006. Nitroproteins from a human pituitary adenoma tissue discovered with a nitrotyrosine affinity column and tandem mass spectrometry. *Anal. Biochem.* 354: 279-289.
- Hasegawa, Y., et al. 2006. A RecA-mediated exon profiling method. *Nucleic Acids Res.* 34: e97.
- Chelvarajan, R.L., et al. 2006. Molecular basis of age-associated cytokine dysregulation in LPS-stimulated macrophages. *J. Leukoc. Biol.* 79: 1314-1327.
- Burger, D., et al. 2006. Is IL-1 a good therapeutic target in the treatment of arthritis? *Best Pract. Res. Clin. Rheumatol.* 20: 879-896.
- Barksby, H.E., et al. 2007. The expanding family of interleukin-1 cytokines and their role in destructive inflammatory disorders. *Clin. Exp. Immunol.* 149: 217-225.
- Chackerian, A.A., et al. 2007. IL-1 receptor accessory protein and ST2 comprise the IL-33 receptor complex. *J. Immunol.* 179: 2551-2555.

CHROMOSOMAL LOCATION

Genetic locus: IL36A (human) mapping to 2q13.

SOURCE

IL-1F6 (N-15) is an affinity purified goat polyclonal antibody raised against a peptide mapping near the N-terminus of IL-1F6 of human origin.

RESEARCH USE

For research use only, not for use in diagnostic procedures.

PRODUCT

Each vial contains 200 μ g IgG in 1.0 ml of PBS with < 0.1% sodium azide and 0.1% gelatin.

Blocking peptide available for competition studies, sc-51302 P, (100 μ g peptide in 0.5 ml PBS containing < 0.1% sodium azide and 0.2% BSA).

APPLICATIONS

IL-1F6 (N-15) is recommended for detection of IL-1F6 of human origin by Western Blotting (starting dilution 1:200, dilution range 1:100-1:1000), immunofluorescence (starting dilution 1:50, dilution range 1:50-1:500), immunohistochemistry (including paraffin-embedded sections) (starting dilution 1:50, dilution range 1:50-1:500) and solid phase ELISA (starting dilution 1:30, dilution range 1:30-1:3000).

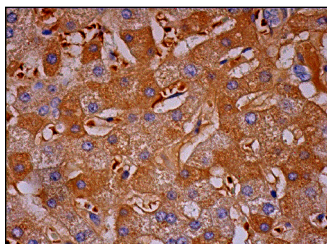
Suitable for use as control antibody for IL-1F6 siRNA (h): sc-72168, IL-1F6 shRNA Plasmid (h): sc-72168-SH and IL-1F6 shRNA (h) Lentiviral Particles: sc-72168-V.

Molecular Weight of IL-1F6: 18 kDa.

RECOMMENDED SECONDARY REAGENTS

To ensure optimal results, the following support (secondary) reagents are recommended: 1) Western Blotting: use donkey anti-goat IgG-HRP: sc-2020 (dilution range: 1:2000-1:100,000) or Cruz Marker[™] compatible donkey anti-goat IgG-HRP: sc-2033 (dilution range: 1:2000-1:5000), Cruz Marker[™] Molecular Weight Standards: sc-2035, TBS Blotto A Blocking Reagent: sc-2333 and Western Blotting Luminol Reagent: sc-2048. 2) Immunofluorescence: use donkey anti-goat IgG-FITC: sc-2024 (dilution range: 1:100-1:400) or donkey anti-goat IgG-TR: sc-2783 (dilution range: 1:100-1:400) with UltraCruz[™] Mounting Medium: sc-24941. 3) Immunohistochemistry: use ImmunoCruz[™]: sc-2053 or ABC: sc-2023 goat IgG Staining Systems.

DATA



FM03 (T-17): sc-51288. Immunoperoxidase staining of formalin fixed, paraffin-embedded human liver tissue showing cytoplasmic and membrane staining of hepatocytes and cytoplasmic staining of sinusoidal endothelial cells.

STORAGE

Store at 4° C, ****DO NOT FREEZE****. Stable for one year from the date of shipment. Non-hazardous. No MSDS required.