

PROSER2 (G-11): sc-514063



The Power to Question

BACKGROUND

Chromosome 10 contains over 800 genes and 135 million nucleotides, making up nearly 4.5% of the human genome. PTEN is an important tumor suppressor gene located on chromosome 10 and, when defective, causes a genetic predisposition to cancer development known as Cowden syndrome. The chromosome 10 encoded gene ERCC6 is important for DNA repair and is linked to Cockayne syndrome which is characterized by extreme photosensitivity and premature aging. Tetrahydrobiopterin deficiency and a number of syndromes involving defective skull and facial bone fusion are also linked to chromosome 10. As with most trisomies, trisomy 10 is rare and is deleterious.

REFERENCES

1. Jabs, E.W., et al. 1994. Jackson-Weiss and Crouzon syndromes are allelic with mutations in fibroblast growth factor receptor 2. *Nat. Genet.* 8: 275-279.
2. Deloukas, P., et al. 2000. Report of the third international workshop on human chromosome 10 mapping and sequencing 1999. *Cytogenet. Cell Genet.* 90: 1-12.
3. Gilbert, F. 2001. Chromosome 10. *Genet. Test.* 5: 69-82.
4. Berger, P., et al. 2002. Molecular cell biology of Charcot-Marie-Tooth disease. *Neurogenetics* 4: 1-15.

CHROMOSOMAL LOCATION

Genetic locus: PROSER2 (human) mapping to 10p14; Proser2 (mouse) mapping to 2 A1.

SOURCE

PROSER2 (G-11) is a mouse monoclonal antibody specific for an epitope mapping between amino acids 181-198 within an internal region of PROSER2 of human origin.

PRODUCT

Each vial contains 200 µg IgG_{2a} kappa light chain in 1.0 ml of PBS with < 0.1% sodium azide and 0.1% gelatin.

PROSER2 (G-11) is available conjugated to agarose (sc-514063 AC), 500 µg/0.25 ml agarose in 1 ml, for IP; to HRP (sc-514063 HRP), 200 µg/ml, for WB, IHC(P) and ELISA; to either phycoerythrin (sc-514063 PE), fluorescein (sc-514063 FITC), Alexa Fluor® 488 (sc-514063 AF488), Alexa Fluor® 546 (sc-514063 AF546), Alexa Fluor® 594 (sc-514063 AF594) or Alexa Fluor® 647 (sc-514063 AF647), 200 µg/ml, for WB (RGB), IF, IHC(P) and FCM; and to either Alexa Fluor® 680 (sc-514063 AF680) or Alexa Fluor® 790 (sc-514063 AF790), 200 µg/ml, for Near-Infrared (NIR) WB, IF and FCM.

Blocking peptide available for competition studies, sc-514063 P, (100 µg peptide in 0.5 ml PBS containing < 0.1% sodium azide and 0.2% stabilizer protein).

Alexa Fluor® is a trademark of Molecular Probes, Inc., Oregon, USA

RESEARCH USE

For research use only, not for use in diagnostic procedures.

APPLICATIONS

PROSER2 (G-11) is recommended for detection of PROSER2 of mouse, rat and human origin by Western Blotting (starting dilution 1:100, dilution range 1:100-1:1000), immunoprecipitation [1-2 µg per 100-500 µg of total protein (1 ml of cell lysate)], immunofluorescence (starting dilution 1:50, dilution range 1:50-1:500) and solid phase ELISA (starting dilution 1:30, dilution range 1:30-1:3000).

Suitable for use as control antibody for PROSER2 siRNA (h): sc-90470, PROSER2 siRNA (m): sc-141817, PROSER2 shRNA Plasmid (h): sc-90470-SH, PROSER2 shRNA Plasmid (m): sc-141817-SH, PROSER2 shRNA (h) Lentiviral Particles: sc-90470-V and PROSER2 shRNA (m) Lentiviral Particles: sc-141817-V.

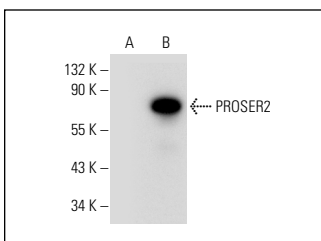
Molecular Weight of PROSER2: 46 kDa.

Positive Controls: PROSER2 (h2): 293T Lysate: sc-116056.

RECOMMENDED SUPPORT REAGENTS

To ensure optimal results, the following support reagents are recommended: 1) Western Blotting: use m-IgGκ BP-HRP: sc-516102 or m-IgGκ BP-HRP (Cruz Marker): sc-516102-CM (dilution range: 1:1000-1:10000), Cruz Marker™ Molecular Weight Standards: sc-2035, UltraCruz® Blocking Reagent: sc-516214 and Western Blotting Luminol Reagent: sc-2048. 2) Immunoprecipitation: use Protein A/G PLUS-Agarose: sc-2003 (0.5 ml agarose/2.0 ml). 3) Immunofluorescence: use m-IgGκ BP-FITC: sc-516140 or m-IgGκ BP-PE: sc-516141 (dilution range: 1:50-1:200) with UltraCruz® Mounting Medium: sc-24941 or UltraCruz® Hard-set Mounting Medium: sc-359850.

DATA



PROSER2 (G-11): sc-514063. Western blot analysis of PROSER2 expression in non-transfected: sc-117752 (A) and human PROSER2 transfected: sc-116056 (B) 293T whole cell lysates.

STORAGE

Store at 4° C, **DO NOT FREEZE**. Stable for one year from the date of shipment. Non-hazardous. No MSDS required.

PROTOCOLS

See our web site at www.scbt.com for detailed protocols and support products.