

DLK2 (D-5): sc-514089

BACKGROUND

DLK2 (delta homolog 2), also known as EGFL9 (Epidermal growth factor-like protein 9), is a 383 amino acid single-pass transmembrane protein with 6 tandem EGF-like repeats in the putative extracellular domain, which is characteristic of the EGF-like protein family. DLK2 shares nearly identical structural features with DLK, suggesting that it may function in a similar way. Like DLK, DLK2 affects adipogenesis of 3T3-L1 preadipocytes and mesenchymal C3H10T1/2 cells, yet it does so in an opposite way to that of DLK. Also, expression of DLK and DLK2 are inversely correlated and changes in expression of one gene will affect the expression levels of the other. Therefore, it is likely that adipogenesis is modulated by the coordinated expression of DLK and DLK2. There are two isoforms of DLK2 that are produced as a result of alternative splicing events.

REFERENCES

- Garces, C., et al. 1999. Adipocyte differentiation is modulated by secreted delta-like (dlk) variants and requires the expression of membrane-associated dlk. *Differentiation* 64: 103-114.
- Cowherd, R.M., et al. 1999. Molecular regulation of adipocyte differentiation. *Semin. Cell Dev. Biol.* 10: 3-10.
- Ntambi, J.M., et al. 2000. Adipocyte differentiation and gene expression. *J. Nutr.* 130: 3122S-3126S.
- Nueda, M.L., et al. 2007. The novel gene EGFL9/Dlk2, highly homologous to Dlk1, functions as a modulator of adipogenesis. *J. Mol. Biol.* 367: 1270-1280.
- Nueda, M.L., et al. 2007. The EGF-like protein dlk1 inhibits notch signaling and potentiates adipogenesis of mesenchymal cells. *J. Mol. Biol.* 367: 1281-1293.
- Nueda, M.L., et al. 2008. dlk1 specifically interacts with Insulin-like growth factor binding protein 1 to modulate adipogenesis of 3T3-L1 cells. *J. Mol. Biol.* 379: 428-442.
- Sul, H.S. 2009. Minireview: Pref-1: role in adipogenesis and mesenchymal cell fate. *Mol. Endocrinol.* 23: 1717-1725.

CHROMOSOMAL LOCATION

Genetic locus: DLK2 (human) mapping to 6p21.1.

SOURCE

DLK2 (D-5) is a mouse monoclonal antibody specific for an epitope mapping between amino acids 250-271 within an extracellular domain of DLK2 of human origin.

PRODUCT

Each vial contains 200 µg IgG₃ kappa light chain in 1.0 ml of PBS with < 0.1% sodium azide and 0.1% gelatin.

Blocking peptide available for competition studies, sc-514089 P, (100 µg peptide in 0.5 ml PBS containing < 0.1% sodium azide and 0.2% stabilizer protein).

APPLICATIONS

DLK2 (D-5) is recommended for detection of DLK2 of human origin by Western Blotting (starting dilution 1:100, dilution range 1:100-1:1000), immunoprecipitation [1-2 µg per 100-500 µg of total protein (1 ml of cell lysate)], immunofluorescence (starting dilution 1:50, dilution range 1:50-1:500) and solid phase ELISA (starting dilution 1:30, dilution range 1:30-1:3000).

Suitable for use as control antibody for DLK2 siRNA (h): sc-95621, DLK2 shRNA Plasmid (h): sc-95621-SH and DLK2 shRNA (h) Lentiviral Particles: sc-95621-V.

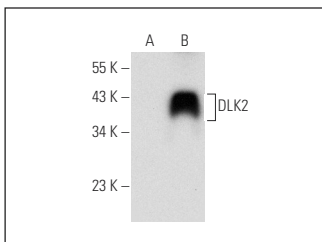
Molecular Weight of DLK2: 41 kDa.

Positive Controls: DLK2 (h): 293T Lysate: sc-111975.

RECOMMENDED SUPPORT REAGENTS

To ensure optimal results, the following support reagents are recommended: 1) Western Blotting: use m-IgGκ BP-HRP: sc-516102 or m-IgGκ BP-HRP (Cruz Marker): sc-516102-CM (dilution range: 1:1000-1:10000), Cruz Marker™ Molecular Weight Standards: sc-2035, TBS Blotto A Blocking Reagent: sc-2333 and Western Blotting Luminol Reagent: sc-2048. 2) Immunoprecipitation: use Protein A/G PLUS-Agarose: sc-2003 (0.5 ml agarose/2.0 ml). 3) Immunofluorescence: use m-IgGκ BP-FITC: sc-516140 or m-IgGκ BP-PE: sc-516141 (dilution range: 1:50-1:200) with UltraCruz® Mounting Medium: sc-24941 or UltraCruz® Hard-set Mounting Medium: sc-359850.

DATA



DLK2 (D-5): sc-514089. Western blot analysis of DLK2 expression in non-transfected: sc-117752 (A) and human DLK2 transfected: sc-111975 (B) 293T whole cell lysates.

STORAGE

Store at 4° C, **DO NOT FREEZE**. Stable for one year from the date of shipment. Non-hazardous. No MSDS required.

RESEARCH USE

For research use only, not for use in diagnostic procedures.

PROTOCOLS

See our web site at www.scbt.com for detailed protocols and support products.