

Nulp1 (A-6): sc-514203



The Power to Question

BACKGROUND

Nulp1 (nuclear localized protein 1), also known as TCF25 (transcription factor 25 (basic helix-loop-helix)), Hulp1 or FKSG26, is a 676 amino acid protein that plays a role in cell death. A member of the TCF25 family, Nulp1 utilizes its C-terminus to mediate transcriptional repression of SRF *in vitro*, and interacts with XIAP. Nulp1 localizes primarily to the nucleus but is also found in cytosol. Widely expressed, Nulp1 is found at high levels in embryonic brain and adult heart. The gene encoding Nulp1 maps to human chromosome 16, which encodes over 900 genes and comprises nearly 3% of the human genome. The GAN gene is located on chromosome 16 and, with mutation, may lead to giant axonal neuropathy, a nervous system disorder characterized by increasing malfunction with growth. The rare disorder Rubinstein-Taybi syndrome is also associated with chromosome 16, as is Crohn's disease, which is a gastrointestinal inflammatory condition.

CHROMOSOMAL LOCATION

Genetic locus: TCF25 (human) mapping to 16q24.3; Tcf25 (mouse) mapping to 8 E1.

SOURCE

Nulp1 (A-6) is a mouse monoclonal antibody specific for an epitope mapping between amino acids 140-163 within an internal region of Nulp1 of human origin.

PRODUCT

Each vial contains 200 µg IgG₁ kappa light chain in 1.0 ml of PBS with < 0.1% sodium azide and 0.1% gelatin. Also available as TransCruz reagent for Gel Supershift and ChIP applications, sc-514203 X, 200 µg/0.1 ml.

Nulp1 (A-6) is available conjugated to agarose (sc-514203 AC), 500 µg/0.25 ml agarose in 1 ml, for IP; to HRP (sc-514203 HRP), 200 µg/ml, for WB, IHC(P) and ELISA; to either phycoerythrin (sc-514203 PE), fluorescein (sc-514203 FITC), Alexa Fluor® 488 (sc-514203 AF488), Alexa Fluor® 546 (sc-514203 AF546), Alexa Fluor® 594 (sc-514203 AF594) or Alexa Fluor® 647 (sc-514203 AF647), 200 µg/ml, for WB (RGB), IF, IHC(P) and FCM; and to either Alexa Fluor® 680 (sc-514203 AF680) or Alexa Fluor® 790 (sc-514203 AF790), 200 µg/ml, for Near-Infrared (NIR) WB, IF and FCM.

Blocking peptide available for competition studies, sc-514203 P, (100 µg peptide in 0.5 ml PBS containing < 0.1% sodium azide and 0.2% stabilizer protein).

Alexa Fluor® is a trademark of Molecular Probes, Inc., Oregon, USA

STORAGE

Store at 4° C, ****DO NOT FREEZE****. Stable for one year from the date of shipment. Non-hazardous. No MSDS required.

PROTOCOLS

See our web site at www.scbt.com for detailed protocols and support products.

APPLICATIONS

Nulp1 (A-6) is recommended for detection of Nulp1 of mouse, rat and human origin by Western Blotting (starting dilution 1:100, dilution range 1:100-1:1000), immunoprecipitation [1-2 µg per 100-500 µg of total protein (1 ml of cell lysate)], immunofluorescence (starting dilution 1:50, dilution range 1:50-1:500) and solid phase ELISA (starting dilution 1:30, dilution range 1:30-1:3000).

Suitable for use as control antibody for Nulp1 siRNA (h): sc-93467, Nulp1 siRNA (m): sc-150116, Nulp1 shRNA Plasmid (h): sc-93467-SH, Nulp1 shRNA Plasmid (m): sc-150116-SH, Nulp1 shRNA (h) Lentiviral Particles: sc-93467-V and Nulp1 shRNA (m) Lentiviral Particles: sc-150116-V.

Nulp1 (A-6) X TransCruz antibody is recommended for Gel Supershift and ChIP applications.

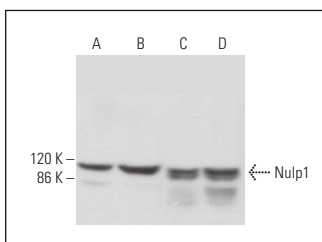
Molecular Weight of Nulp1: 77 kDa.

Positive Controls: HeLa whole cell lysate: sc-2200, Jurkat whole cell lysate: sc-2204 or K-562 whole cell lysate: sc-2203.

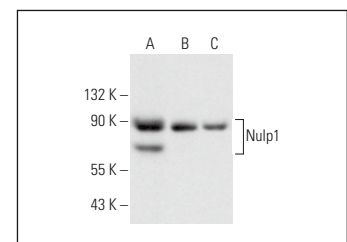
RECOMMENDED SUPPORT REAGENTS

To ensure optimal results, the following support reagents are recommended: 1) Western Blotting: use m-IgGκ BP-HRP: sc-516102 or m-IgGκ BP-HRP (Cruz Marker): sc-516102-CM (dilution range: 1:1000-1:10000), Cruz Marker™ Molecular Weight Standards: sc-2035, UltraCruz® Blocking Reagent: sc-516214 and Western Blotting Luminol Reagent: sc-2048. 2) Immunoprecipitation: use Protein A/G PLUS-Agarose: sc-2003 (0.5 ml agarose/2.0 ml). 3) Immunofluorescence: use m-IgGκ BP-FITC: sc-516140 or m-IgGκ BP-PE: sc-516141 (dilution range: 1:50-1:200) with UltraCruz® Mounting Medium: sc-24941 or UltraCruz® Hard-set Mounting Medium: sc-359850.

DATA



Nulp1 (A-6): sc-514203. Western blot analysis of Nulp1 expression in Jurkat (A), CCRF-CEM (B), Neuro-2A (C) and MM-142 (D) whole cell lysates.



Nulp1 (A-6): sc-514203. Western blot analysis of Nulp1 expression in HeLa (A), Jurkat (B) and K-562 (C) whole cell lysates.

SELECT PRODUCT CITATIONS

- Kang, K., et al. 2018. MicroRNA-326 inhibits melanoma progression by targeting KRAS and suppressing the AKT and ERK signalling pathways. *Oncol. Rep.* 39: 401-410.
- Zhang, X., et al. 2020. NULP1 alleviates cardiac hypertrophy by suppressing NFAT3 transcriptional activity. *J. Am. Heart Assoc.* 9: e016419.

RESEARCH USE

For research use only, not for use in diagnostic procedures.