

LRCH4 (P-13): sc-51423

BACKGROUND

Members of the leucine-rich repeat family include LRCH1, LRCH2, LRCH3 and LRCH4. All family members contain one calponin-homology domain and nine leucine-rich repeats. LRCH4 (leucine-rich repeats and calponin homology (CH) domain containing 4), also known as LRN, LRRN1, LRRN4 or SAP25, is a 683 amino acid protein that belongs to the leucine-rich repeat family. The carboxy-terminus of LRCH4 may act as a membrane anchor between cells, while the amino-terminus contains the leucine-rich domains is thought to be involved in ligand binding. The calponin homology (CH) domain is suggested to confer actin binding to a variety of cytoskeletal and signaling molecules. The gene encoding LRCH4 maps to human chromosome 7, which houses over 1,000 genes and comprises nearly 5% of the human genome.

REFERENCES

1. Taguchi, A., et al. 1996. Molecular cloning of novel leucine-rich repeat proteins and their expression in the developing mouse nervous system. *Brain Res. Mol. Brain Res.* 35: 31-40.
2. Bañuelos, S., et al. 1998. Structural comparisons of calponin homology domains: implications for actin binding. *Structure* 6: 1419-1431.
3. Liang, H., et al. 1998. Molecular anatomy of chromosome 7q deletions in myeloid neoplasms: evidence for multiple critical loci. *Proc. Natl. Acad. Sci. USA* 95: 3781-3785.
4. Gimona, M., et al. 2002. Functional plasticity of CH domains. *FEBS Lett.* 513: 98-106.
5. Hillier, L.W., et al. 2003. The DNA sequence of human chromosome 7. *Nature* 424: 157-164.

CHROMOSOMAL LOCATION

Genetic locus: LRCH4 (human) mapping to 7q22.1; Lrch4 (mouse) mapping to 5 G2.

SOURCE

LRCH4 (P-13) is an affinity purified goat polyclonal antibody raised against a peptide mapping near the N-terminus of LRCH4 of human origin.

PRODUCT

Each vial contains 200 µg IgG in 1.0 ml of PBS with < 0.1% sodium azide and 0.1% gelatin.

Blocking peptide available for competition studies, sc-51423 P, (100 µg peptide in 0.5 ml PBS containing < 0.1% sodium azide and 0.2% BSA).

STORAGE

Store at 4° C, ****DO NOT FREEZE****. Stable for one year from the date of shipment. Non-hazardous. No MSDS required.

PROTOCOLS

See our web site at www.scbt.com or our catalog for detailed protocols and support products.

APPLICATIONS

LRCH4 (P-13) is recommended for detection of LRCH4 of mouse, rat and human origin by Western Blotting (starting dilution 1:200, dilution range 1:100-1:1000), immunoprecipitation [1-2 µg per 100-500 µg of total protein (1 ml of cell lysate)], immunofluorescence (starting dilution 1:50, dilution range 1:50-1:500), immunohistochemistry (including paraffin-embedded sections) (starting dilution 1:50, dilution range 1:50-1:500) and solid phase ELISA (starting dilution 1:30, dilution range 1:30-1:3000).

Suitable for use as control antibody for LRCH4 siRNA (h): sc-72376, LRCH4 siRNA (m): sc-72377, LRCH4 shRNA Plasmid (h): sc-72376-SH, LRCH4 shRNA Plasmid (m): sc-72377-SH, LRCH4 shRNA (h) Lentiviral Particles: sc-72376-V and LRCH4 shRNA (m) Lentiviral Particles: sc-72377-V.

Molecular Weight (predicted) of LRCH4: 73 kDa.

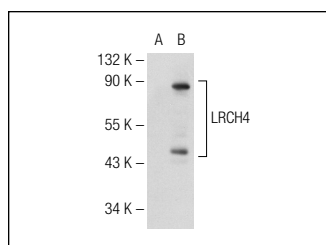
Molecular Weight (observed) of LRCH4: 83 kDa.

Positive Controls: SH-SY5Y cell lysate: sc-3812, IMR-32 cell lysate: sc-2409 or LRCH4 (h): 293 Lysate: sc-113267.

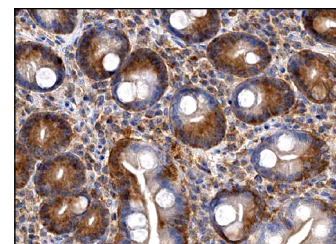
RECOMMENDED SECONDARY REAGENTS

To ensure optimal results, the following support (secondary) reagents are recommended: 1) Western Blotting: use donkey anti-goat IgG-HRP: sc-2020 (dilution range: 1:2000-1:100,000) or Cruz Marker™ compatible donkey anti-goat IgG-HRP: sc-2033 (dilution range: 1:2000-1:5000), Cruz Marker™ Molecular Weight Standards: sc-2035, TBS Blotto A Blocking Reagent: sc-2333 and Western Blotting Luminol Reagent: sc-2048. 2) Immunoprecipitation: use Protein A/G PLUS-Agarose: sc-2003 (0.5 ml agarose/2.0 ml). 3) Immunofluorescence: use donkey anti-goat IgG-FITC: sc-2024 (dilution range: 1:100-1:400) or donkey anti-goat IgG-TR: sc-2783 (dilution range: 1:100-1:400) with UltraCruz™ Mounting Medium: sc-24941. 4) Immunohistochemistry: use ImmunoCruz™: sc-2053 or ABC: sc-2023 goat IgG Staining Systems.

DATA



LRCH4 (P-13): sc-51423. Western blot analysis of LRCH4 expression in non-transfected: sc-110760 (A) and human LRCH4 transfected: sc-113267 (B) 293 whole cell lysates.



LRCH4 (P-13): sc-51423. Immunoperoxidase staining of formalin fixed, paraffin-embedded human duodenum tissue showing cytoplasmic staining of glandular cells at high magnification. Kindly provided by The Swedish Human Protein Atlas (HPA) program.

RESEARCH USE

For research use only, not for use in diagnostic procedures.