

ANKRD10 (G-5): sc-514274

BACKGROUND

ANKRD10 (ankyrin repeat domain-containing protein 10) is a 420 amino acid protein that contains 4 ankyrin repeats and is expressed as 2 alternatively spliced isoforms. The gene encoding ANKRD10 maps to chromosome 13. Comprising nearly 4% of the human genome, chromosome 13 contains around 114 million base pairs and encodes over 400 genes. Chromosome 13 houses key tumor suppressor genes, including BRCA2 and RB1, which are associated with breast cancer susceptibility and retinoblastoma, respectively. Trisomy 13, also known as Patau syndrome, is deadly and the few who survive past one year suffer from permanent neurologic defects, difficulty eating and vulnerability to serious respiratory infections.

CHROMOSOMAL LOCATION

Genetic locus: ANKRD10 (human) mapping to 13q34; Ankrd10 (mouse) mapping to 8 A1.1.

SOURCE

ANKRD10 (G-5) is a mouse monoclonal antibody raised against amino acids 15-129 mapping at the N-terminus of ANKRD10 of human origin.

PRODUCT

Each vial contains 200 µg IgG₁ kappa light chain in 1.0 ml of PBS with < 0.1% sodium azide and 0.1% gelatin.

ANKRD10 (G-5) is available conjugated to agarose (sc-514274 AC), 500 µg/0.25 ml agarose in 1 ml, for IP; to HRP (sc-514274 HRP), 200 µg/ml, for WB, IHC(P) and ELISA; to either phycoerythrin (sc-514274 PE), fluorescein (sc-514274 FITC), Alexa Fluor[®] 488 (sc-514274 AF488), Alexa Fluor[®] 546 (sc-514274 AF546), Alexa Fluor[®] 594 (sc-514274 AF594) or Alexa Fluor[®] 647 (sc-514274 AF647), 200 µg/ml, for WB (RGB), IF, IHC(P) and FCM; and to either Alexa Fluor[®] 680 (sc-514274 AF680) or Alexa Fluor[®] 790 (sc-514274 AF790), 200 µg/ml, for Near-Infrared (NIR) WB, IF and FCM.

Alexa Fluor[®] is a trademark of Molecular Probes, Inc., Oregon, USA

APPLICATIONS

ANKRD10 (G-5) is recommended for detection of ANKRD10 of mouse, rat and human origin by Western Blotting (starting dilution 1:100, dilution range 1:100-1:1000), immunoprecipitation [1-2 µg per 100-500 µg of total protein (1 ml of cell lysate)], immunofluorescence (starting dilution 1:50, dilution range 1:50-1:500) and solid phase ELISA (starting dilution 1:30, dilution range 1:30-1:3000).

Suitable for use as control antibody for ANKRD10 siRNA (h): sc-105063, ANKRD10 siRNA (m): sc-141073, ANKRD10 shRNA Plasmid (h): sc-105063-SH, ANKRD10 shRNA Plasmid (m): sc-141073-SH, ANKRD10 shRNA (h) Lentiviral Particles: sc-105063-V and ANKRD10 shRNA (m) Lentiviral Particles: sc-141073-V.

Molecular Weight (predicted) of ANKRD10: 45 kDa.

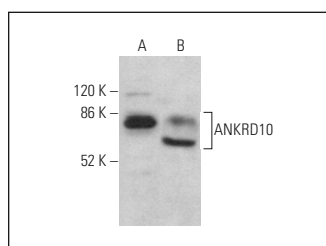
Molecular Weight (observed) of ANKRD10: 42 kDa.

Positive Controls: human salivary gland extract: sc-363762 or M1 whole cell lysate: sc-364782.

RECOMMENDED SUPPORT REAGENTS

To ensure optimal results, the following support reagents are recommended: 1) Western Blotting: use m-IgGκ BPHRP: sc-516102 or m-IgGκ BPHRP (Cruz Marker): sc-516102-CM (dilution range: 1:1000-1:10000), Cruz Marker[™] Molecular Weight Standards: sc-2035, UltraCruz[®] Blocking Reagent: sc-516214 and Western Blotting Luminol Reagent: sc-2048. 2) Immunoprecipitation: use Protein A/G PLUS-Agarose: sc-2003 (0.5 ml agarose/2.0 ml). 3) Immunofluorescence: use m-IgGκ BPFITC: sc-516140 or m-IgGκ BPE: sc-516141 (dilution range: 1:50-1:200) with UltraCruz[®] Mounting Medium: sc-24941 or UltraCruz[®] Hard-set Mounting Medium: sc-359850.

DATA



ANKRD10 (G-5): sc-514274. Western blot analysis of ANKRD10 expression in M1 whole cell lysate (A) and human salivary gland tissue extract (B).

STORAGE

Store at 4° C, ****DO NOT FREEZE****. Stable for one year from the date of shipment. Non-hazardous. No MSDS required.

RESEARCH USE

For research use only, not for use in diagnostic procedures.

PROTOCOLS

See our web site at www.scbt.com for detailed protocols and support products.