

# VWA8 (E-9): sc-514470

## BACKGROUND

VWA8 (von willebrand factor A domain containing 8), also known as KIAA0564, is a 1,905 amino acid secreted protein that contains a VWFA domain. Existing as three alternatively spliced isoforms, the gene encoding VWA8 maps to human chromosome 13q14.11 and mouse chromosome 14 D3. Comprising nearly 4% of human DNA, chromosome 13 contains around 114 million base pairs and 400 genes. Key tumor suppressor genes on chromosome 13 include the breast cancer susceptibility gene, BRCA2, and the RB1 (retinoblastoma) gene. RB1 encodes a crucial tumor suppressor protein which, when defective, leads to malignant growth in the retina and has been implicated in a variety of other cancers. The gene SLITRK1, which is associated with Tourette syndrome, is on chromosome 13. As with most chromosomes, polysomy of part or all of chromosome 13 is deleterious to development and decreases the odds of survival. Trisomy 13, also known as Patau syndrome, is quite deadly and the few who survive past one year suffer from permanent neurologic defects, difficulty eating and vulnerability to serious respiratory infections.

## REFERENCES

- Dunham, A., et al. 2004. The DNA sequence and analysis of human chromosome 13. *Nature* 428: 522-528.
- Deng, H., et al. 2006. Examination of the SLITRK1 gene in Caucasian patients with Tourette syndrome. *Acta Neurol. Scand.* 114: 400-402.
- Giacinti, C. and Giordano, A. 2006. RB and cell cycle progression. *Oncogene* 25: 5220-5227.

## CHROMOSOMAL LOCATION

Genetic locus: VWA8 (human) mapping to 13q14.11; Vwa8 (mouse) mapping to 14 D3.

## SOURCE

VWA8 (E-9) is a mouse monoclonal antibody specific for an epitope mapping between amino acids 1787-1809 within an internal region of VWA8 of human origin.

## PRODUCT

Each vial contains 200 µg IgG<sub>2b</sub> kappa light chain in 1.0 ml of PBS with < 0.1% sodium azide and 0.1% gelatin.

VWA8 (E-9) is available conjugated to agarose (sc-514470 AC), 500 µg/0.25 ml agarose in 1 ml, for IP; to HRP (sc-514470 HRP), 200 µg/ml, for WB, IHC(P) and ELISA; to either phycoerythrin (sc-514470 PE), fluorescein (sc-514470 FITC), Alexa Fluor<sup>®</sup> 488 (sc-514470 AF488), Alexa Fluor<sup>®</sup> 546 (sc-514470 AF546), Alexa Fluor<sup>®</sup> 594 (sc-514470 AF594) or Alexa Fluor<sup>®</sup> 647 (sc-514470 AF647), 200 µg/ml, for WB (RGB), IF, IHC(P) and FCM; and to either Alexa Fluor<sup>®</sup> 680 (sc-514470 AF680) or Alexa Fluor<sup>®</sup> 790 (sc-514470 AF790), 200 µg/ml, for Near-Infrared (NIR) WB, IF and FCM.

Blocking peptide available for competition studies, sc-514470 P, (100 µg peptide in 0.5 ml PBS containing < 0.1% sodium azide and 0.2% stabilizer protein).

Alexa Fluor<sup>®</sup> is a trademark of Molecular Probes, Inc., Oregon, USA

## APPLICATIONS

VWA8 (E-9) is recommended for detection of VWA8 of mouse, rat and human origin by Western Blotting (starting dilution 1:100, dilution range 1:100-1:1000), immunoprecipitation [1-2 µg per 100-500 µg of total protein (1 ml of cell lysate)], immunofluorescence (starting dilution 1:50, dilution range 1:50-1:500) and solid phase ELISA (starting dilution 1:30, dilution range 1:30-1:3000).

Suitable for use as control antibody for VWA8 siRNA (h): sc-75448, VWA8 siRNA (m): sc-108220, VWA8 shRNA Plasmid (h): sc-75448-SH, VWA8 shRNA Plasmid (m): sc-108220-SH, VWA8 shRNA (h) Lentiviral Particles: sc-75448-V and VWA8 shRNA (m) Lentiviral Particles: sc-108220-V.

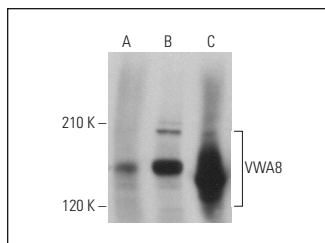
Molecular Weight of VWA8: 215 kDa.

Positive Controls: Jurkat whole cell lysate: sc-2204, HuT 78 whole cell lysate: sc-2208 or SK-N-MC cell lysate: sc-2237.

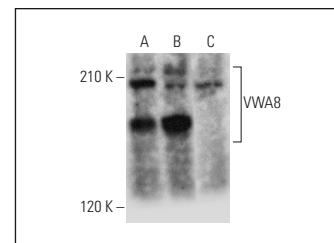
## RECOMMENDED SUPPORT REAGENTS

To ensure optimal results, the following support reagents are recommended: 1) Western Blotting: use m-IgGκ BP-HRP: sc-516102 or m-IgGκ BP-HRP (Cruz Marker): sc-516102-CM (dilution range: 1:1000-1:10000), Cruz Marker<sup>™</sup> Molecular Weight Standards: sc-2035, UltraCruz<sup>®</sup> Blocking Reagent: sc-516214 and Western Blotting Luminol Reagent: sc-2048. 2) Immunoprecipitation: use Protein A/G PLUS-Agarose: sc-2003 (0.5 ml agarose/2.0 ml). 3) Immunofluorescence: use m-IgGκ BP-FITC: sc-516140 or m-IgGκ BP-PE: sc-516141 (dilution range: 1:50-1:200) with UltraCruz<sup>®</sup> Mounting Medium: sc-24941 or UltraCruz<sup>®</sup> Hard-set Mounting Medium: sc-359850.

## DATA



VWA8 (E-9): sc-514470. Western blot analysis of VWA8 expression in HeLa (A), K-562 (B) and NIH/3T3 (C) whole cell lysates.



VWA8 (E-9): sc-514470. Western blot analysis of VWA8 expression in Jurkat (A), HuT 78 (B) and SK-N-MC (C) whole cell lysates.

## STORAGE

Store at 4° C, \*\*DO NOT FREEZE\*\*. Stable for one year from the date of shipment. Non-hazardous. No MSDS required.

## RESEARCH USE

For research use only, not for use in diagnostic procedures.

## PROTOCOLS

See our web site at [www.scbt.com](http://www.scbt.com) for detailed protocols and support products.