

# GLIPR1L2 (B-12): sc-514645

## BACKGROUND

The GLIPR1 (glioma pathogenesis-related 1) family consists of three core members, designated GLIPR1, GLIPR1L1 and GLIPR1L2 (GLIPR1-like protein 2), which form a distinct subgroup within the cysteine-rich secretory protein (CRISP), antigen 5 and pathogenesis-related 1 (CAP) superfamily. Each member of the CAP superfamily has a conserved N-terminal CAP domain and a distinct C-terminal extension. CAP superfamily proteins are hypothesized to have roles in immunity, cell adhesion, carcinogenesis and male fertility. GLIPR1L2 is a 344 amino acid single-pass membrane protein. Up-regulated by doxycycline, GLIPR1L2 is expressed in prostate, kidney, bladder, lung and bone marrow, with highest expression in testis. GLIPR1L2 exists as six isoforms produced by alternative splicing events.

## REFERENCES

1. Ren, C., et al. 2006. Identification and characterization of RTVP1/GLIPR1-like genes, a novel p53 target gene cluster. *Genomics* 88: 163-172.
2. Online Mendelian Inheritance in Man, OMIM™. 2006. Johns Hopkins University, Baltimore, MD. MIM Number: 610394. World Wide Web URL: <http://www.ncbi.nlm.nih.gov/omim/610394>
3. Chilukamurri, L., et al. 2007. Hypomethylation and aberrant expression of the glioma pathogenesis-related 1 gene in Wilms tumors. *Neoplasia* 9: 970-978.
4. Li, L., et al. 2008. Glioma pathogenesis-related protein 1 exerts tumor suppressor activities through proapoptotic reactive oxygen species-c-Jun-NH<sub>2</sub> kinase signaling. *Cancer Res.* 68: 434-443.

## CHROMOSOMAL LOCATION

Genetic locus: GLIPR1L2 (human) mapping to 12q21.2; Glipr1l2 (mouse) mapping to 10 D2.

## SOURCE

GLIPR1L2 (B-12) is a mouse monoclonal antibody specific for an epitope mapping between amino acids 46-70 near the N-terminus of GLIPR1L2 of human origin.

## PRODUCT

Each vial contains 200 µg IgG<sub>1</sub> kappa light chain in 1.0 ml of PBS with < 0.1% sodium azide and 0.1% gelatin.

GLIPR1L2 (B-12) is available conjugated to agarose (sc-514645 AC), 500 µg/0.25 ml agarose in 1 ml, for IP; to HRP (sc-514645 HRP), 200 µg/ml, for WB, IHC(P) and ELISA; to either phycoerythrin (sc-514645 PE), fluorescein (sc-514645 FITC), Alexa Fluor® 488 (sc-514645 AF488), Alexa Fluor® 546 (sc-514645 AF546), Alexa Fluor® 594 (sc-514645 AF594) or Alexa Fluor® 647 (sc-514645 AF647), 200 µg/ml, for WB (RGB), IF, IHC(P) and FCM; and to either Alexa Fluor® 680 (sc-514645 AF680) or Alexa Fluor® 790 (sc-514645 AF790), 200 µg/ml, for Near-Infrared (NIR) WB, IF and FCM.

Blocking peptide available for competition studies, sc-514645 P, (100 µg peptide in 0.5 ml PBS containing < 0.1% sodium azide and 0.2% stabilizer protein).

## APPLICATIONS

GLIPR1L2 (B-12) is recommended for detection of GLIPR1L2 of mouse, rat and human origin by Western Blotting (starting dilution 1:100, dilution range 1:100-1:1000), immunoprecipitation [1-2 µg per 100-500 µg of total protein (1 ml of cell lysate)], immunofluorescence (starting dilution 1:50, dilution range 1:50-1:500) and solid phase ELISA (starting dilution 1:30, dilution range 1:30-1:3000).

Suitable for use as control antibody for GLIPR1L2 siRNA (h): sc-95979, GLIPR1L2 siRNA (m): sc-145424, GLIPR1L2 shRNA Plasmid (h): sc-95979-SH, GLIPR1L2 shRNA Plasmid (m): sc-145424-SH, GLIPR1L2 shRNA (h) Lentiviral Particles: sc-95979-V and GLIPR1L2 shRNA (m) Lentiviral Particles: sc-145424-V.

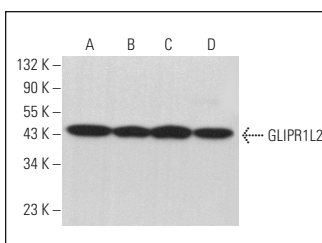
Molecular Weight of GLIPR1L2 isoforms 1/2/3/4/5/6: 40/29/12/19/28/33 kDa.

Positive Controls: F9 cell lysate: sc-2245, c4 whole cell lysate: sc-364186 or EOC 20 whole cell lysate: sc-364187.

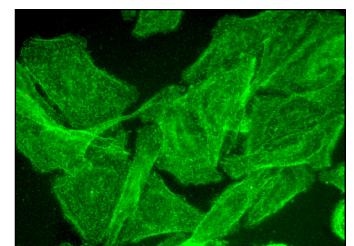
## RECOMMENDED SUPPORT REAGENTS

To ensure optimal results, the following support reagents are recommended: 1) Western Blotting: use m-IgGκ BP-HRP: sc-516102 or m-IgGκ BP-HRP (Cruz Marker): sc-516102-CM (dilution range: 1:1000-1:10000), Cruz Marker™ Molecular Weight Standards: sc-2035, UltraCruz® Blocking Reagent: sc-516214 and Western Blotting Luminol Reagent: sc-2048. 2) Immunoprecipitation: use Protein A/G PLUS-Agarose: sc-2003 (0.5 ml agarose/2.0 ml). 3) Immunofluorescence: use m-IgGκ BP-FITC: sc-516140 or m-IgGκ BP-PE: sc-516141 (dilution range: 1:50-1:200) with UltraCruz® Mounting Medium: sc-24941 or UltraCruz® Hard-set Mounting Medium: sc-359850.

## DATA



GLIPR1L2 (B-12): sc-514645. Western blot analysis of GLIPR1L2 expression in Hep G2 (A), c4 (B), F9 (C) and EOC 20 (D) whole cell lysates.



GLIPR1L2 (B-12): sc-514645. Immunofluorescence staining of formalin-fixed SW480 cells showing membrane localization.

## STORAGE

Store at 4° C, \*\*DO NOT FREEZE\*\*. Stable for one year from the date of shipment. Non-hazardous. No MSDS required.

## RESEARCH USE

For research use only, not for use in diagnostic procedures.

Alexa Fluor® is a trademark of Molecular Probes, Inc., Oregon, USA