

Josephin-3 (G-12): sc-514821

BACKGROUND

Josephin-3 (TATA box-binding protein-associated factor RNA polymerase I subunit D) is a 278 amino acid transcription factor encoded by the human TAF1D gene. The TAF1D gene product is a major component of a TBP and TAF's (TATA box-binding protein-associated factors) complex known as SL1. This SL1 complex is important for the assembly of the preinitiation complex required for RNA polymerase I-dependent transcription. The SL1/TIF-IB complex has been shown to stabilize the nucleolar transcription factor 1/UBTF on rDNA. Impaired function of the SL1 complex leads to reduced levels of Pol I transcription. The TAF1D gene product has been shown to be involved in cell cycle progression and exhibits G₂/M phase specific phosphorylations. The TAF1D gene product is expressed in most tissues and is localized to the nucleus.

REFERENCES

- Rudloff, U., Eberhard, D., Tora, L., Stunnenberg, H. and Grummt, I. 1994. TBP-associated factors interact with DNA and govern species specificity of RNA polymerase I transcription. *EMBO J.* 13: 2611-2616.
- Geiduschek, E.P. and Kassavetis, G.A. 1995. Comparing transcriptional initiation by RNA polymerases I and III. *Curr. Opin. Cell Biol.* 7: 344-351.
- Servant, N., Marcantonio, D., Th'ng, J.P. and Chalifour, L.E. 2004. TBP-associated factor 1 overexpression induces tolerance to Doxorubicin in confluent H9c2 cells by an increase in Cdk2 activity and cyclin E expression. *Mol. Cell. Biochem.* 259: 71-81.
- Friedrich, J.K., Panov, K.I., Cabart, P., Russell, J. and Zomerdijk, J.C. 2005. TBP-TAF complex SL1 directs RNA polymerase I pre-initiation complex formation and stabilizes upstream binding factor at the rDNA promoter. *J. Biol. Chem.* 280: 29551-29558.
- Gorski, J.J., Pathak, S., Panov, K., Kasciukovic, T., Panova, T., Russell, J. and Zomerdijk, J.C. 2007. A novel TBP-associated factor of SL1 functions in RNA polymerase I transcription. *EMBO J.* 26: 1560-1568.
- Kimura, J., Nguyen, S.T., Liu, H., Taira, N., Miki, Y. and Yoshida, K. 2008. A functional genome-wide RNAi screen identifies TAF1 as a regulator for apoptosis in response to genotoxic stress. *Nucleic Acids Res.* 36: 5250-5259.

CHROMOSOMAL LOCATION

Genetic locus: TAF1D (human) mapping to 11q21; Taf1d (mouse) mapping to 9 A2.

SOURCE

Josephin-3 (G-12) is a mouse monoclonal antibody specific for an epitope mapping between amino acids 264-275 at the C-terminus of Josephin-3 of human origin.

STORAGE

Store at 4° C, ****DO NOT FREEZE****. Stable for one year from the date of shipment. Non-hazardous. No MSDS required.

PRODUCT

Each vial contains 200 µg IgM kappa light chain in 1.0 ml of PBS with < 0.1% sodium azide and 0.1% gelatin.

Blocking peptide available for competition studies, sc-514821 P, (100 µg peptide in 0.5 ml PBS containing < 0.1% sodium azide and 0.2% stabilizer protein).

APPLICATIONS

Josephin-3 (G-12) is recommended for detection of Josephin-3 of mouse, rat and human origin by Western Blotting (starting dilution 1:100, dilution range 1:100-1:1000), immunoprecipitation [1-2 µg per 100-500 µg of total protein (1 ml of cell lysate)], immunofluorescence (starting dilution 1:50, dilution range 1:50-1:500) and solid phase ELISA (starting dilution 1:30, dilution range 1:30-1:3000).

Suitable for use as control antibody for Josephin-3 siRNA (h): sc-96913, Josephin-3 siRNA (m): sc-146330, Josephin-3 shRNA Plasmid (h): sc-96913-SH, Josephin-3 shRNA Plasmid (m): sc-146330-SH, Josephin-3 shRNA (h) Lentiviral Particles: sc-96913-V and Josephin-3 shRNA (m) Lentiviral Particles: sc-146330-V.

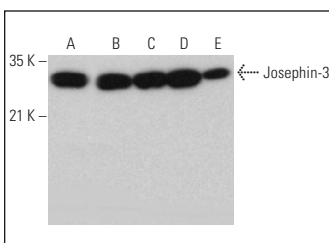
Molecular Weight of Josephin-3: 32 kDa.

Positive Control: HeLa whole cell lysate: sc-2200, Jurkat whole cell lysate: sc-2204 or T24 cell lysate: sc-2292.

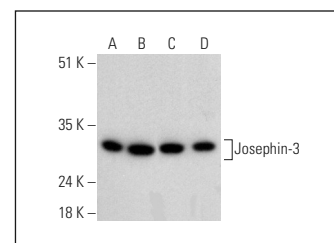
RECOMMENDED SUPPORT REAGENTS

To ensure optimal results, the following support reagents are recommended: 1) Western Blotting: use m-IgGκ BP-HRP: sc-516102 or m-IgGκ BP-HRP (Cruz Marker): sc-516102-CM (dilution range: 1:1000-1:10000), Cruz Marker™ Molecular Weight Standards: sc-2035, UltraCruz® Blocking Reagent: sc-516214 and Western Blotting Luminol Reagent: sc-2048. 2) Immunoprecipitation: use Protein L-Agarose: sc-2336 (0.5 ml agarose/2.0 ml). 3) Immunofluorescence: use m-IgGκ BP-FITC: sc-516140 or m-IgGκ BP-PE: sc-516141 (dilution range: 1:50-1:200) with UltraCruz® Mounting Medium: sc-24941 or UltraCruz® Hard-set Mounting Medium: sc-359850.

DATA



Josephin-3 (G-12): sc-514821. Western blot analysis of Josephin-3 expression in Caco-2 (A), NIH/3T3 (B), WEHI-231 (C) and C6 (D) whole cell lysates and rat lung tissue extract (E).



Josephin-3 (G-12): sc-514821. Western blot analysis of Josephin-3 expression in T24 (A), HeLa (B), Jurkat (C) and MDA-MB-231 (D) whole cell lysates.

RESEARCH USE

For research use only, not for use in diagnostic procedures.