

# SOGA1 (F-6): sc-514885

## BACKGROUND

Representing about 2% of human DNA, chromosome 20 consists of approximately 63 million bases and 600 genes. Chromosome 20 contains a region with numerous genes expressed in the epididymis that are thought important for seminal production and some viewed as potential targets for male contraception. The PRNP gene encoding the prion protein associated with spongiform encephalopathies, like Creutzfeldt-Jakob disease, is found on chromosome 20. Amyotrophic lateral sclerosis, spinal muscular atrophy, ring chromosome 20 epilepsy syndrome and Alagille syndrome are also associated with chromosome 20.

## REFERENCES

1. Prusiner, S.B. 1998. The prion diseases. *Brain Pathol.* 8: 499-513.
2. Collins, S., et al. 2001. Gerstmann-Sträussler-Scheinker syndrome, fatal familial insomnia and kuru: a review of these less common human transmissible spongiform encephalopathies. *J. Clin. Neurosci.* 8: 387-397.
3. Masullo, C. and Macchi, G. 2001. Does PRNP gene control the clinical and pathological phenotype of human spongiform transmissible encephalopathies? *Clin. Neuropathol.* 20: 19-25.
4. Joó, J.G., et al. 2006. Trisomy 20 mosaicism and nonmosaic trisomy 20: a report of 2 cases. *J. Reprod. Med.* 51: 209-212.
5. Ville, D., et al. 2006. Early pattern of epilepsy in the ring chromosome 20 syndrome. *Epilepsia* 47: 543-549.
6. Elghezal, H., et al. 2007. Ring chromosome 20 syndrome without deletions of the subtelomeric and CHRNA4-KCNQ2 genes loci. *Eur. J. Med. Genet.* 50: 441-445.

## CHROMOSOMAL LOCATION

Genetic locus: SOGA1 (human) mapping to 20q11.23; Soga1 (mouse) mapping to 2 H1.

## SOURCE

SOGA1 (F-6) is a mouse monoclonal antibody specific for an epitope mapping between amino acids 429-448 within an internal region of SOGA1 of mouse origin.

## PRODUCT

Each vial contains 200 µg IgG<sub>2b</sub> kappa light chain in 1.0 ml of PBS with < 0.1% sodium azide and 0.1% gelatin.

SOGA1 (F-6) is available conjugated to agarose (sc-514885 AC), 500 µg/0.25 ml agarose in 1 ml, for IP; to HRP (sc-514885 HRP), 200 µg/ml, for WB, IHC(P) and ELISA; to either phycoerythrin (sc-514885 PE), fluorescein (sc-514885 FITC), Alexa Fluor® 488 (sc-514885 AF488), Alexa Fluor® 546 (sc-514885 AF546), Alexa Fluor® 594 (sc-514885 AF594) or Alexa Fluor® 647 (sc-514885 AF647), 200 µg/ml, for WB (RGB), IF, IHC(P) and FCM; and to either Alexa Fluor® 680 (sc-514885 AF680) or Alexa Fluor® 790 (sc-514885 AF790), 200 µg/ml, for Near-Infrared (NIR) WB, IF and FCM.

Alexa Fluor® is a trademark of Molecular Probes, Inc., Oregon, USA

## APPLICATIONS

SOGA1 (F-6) is recommended for detection of SOGA1 of mouse, rat and human origin by Western Blotting (starting dilution 1:100, dilution range 1:100-1:1000), immunoprecipitation [1-2 µg per 100-500 µg of total protein (1 ml of cell lysate)], immunofluorescence (starting dilution 1:50, dilution range 1:50-1:500) and solid phase ELISA (starting dilution 1:30, dilution range 1:30-1:3000).

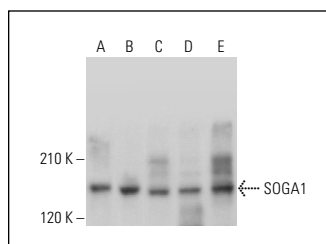
Suitable for use as control antibody for SOGA1 siRNA (h): sc-72699, SOGA1 siRNA (m): sc-140577, SOGA1 shRNA Plasmid (h): sc-72699-SH, SOGA1 shRNA Plasmid (m): sc-140577-SH, SOGA1 shRNA (h) Lentiviral Particles: sc-72699-V and SOGA1 shRNA (m) Lentiviral Particles: sc-140577-V.

Positive Controls: Hep G2 cell lysate: sc-2227, c4 whole cell lysate: sc-364186 or Jurkat whole cell lysate: sc-2204.

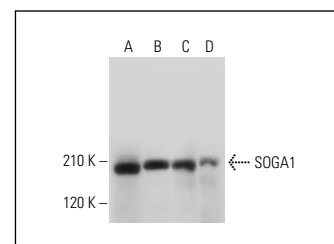
## RECOMMENDED SUPPORT REAGENTS

To ensure optimal results, the following support reagents are recommended: 1) Western Blotting: use m-IgGκ BP-HRP: sc-516102 or m-IgGκ BP-HRP (Cruz Marker): sc-516102-CM (dilution range: 1:1000-1:10000), Cruz Marker™ Molecular Weight Standards: sc-2035, UltraCruz® Blocking Reagent: sc-516214 and Western Blotting Luminol Reagent: sc-2048. 2) Immunoprecipitation: use Protein A/G PLUS-Agarose: sc-2003 (0.5 ml agarose/2.0 ml). 3) Immunofluorescence: use m-IgGκ BP-FITC: sc-516140 or m-IgGκ BP-PE: sc-516141 (dilution range: 1:50-1:200) with UltraCruz® Mounting Medium: sc-24941 or UltraCruz® Hard-set Mounting Medium: sc-359850.

## DATA



SOGA1 (F-6): sc-514885. Western blot analysis of SOGA1 expression in Caki-1 (A) and HeLa (B) whole cell lysates and mouse brain (C), mouse cerebellum (D) and rat cerebellum (E) tissue extracts.



SOGA1 (F-6): sc-514885. Western blot analysis of SOGA1 expression in NIH/3T3 (A), Jurkat (B), c4 (C) and Hep G2 (D) whole cell lysates.

## STORAGE

Store at 4° C, \*\*DO NOT FREEZE\*\*. Stable for one year from the date of shipment. Non-hazardous. No MSDS required.

## RESEARCH USE

For research use only, not for use in diagnostic procedures.

## PROTOCOLS

See our web site at [www.scbt.com](http://www.scbt.com) for detailed protocols and support products.