

LURAP1L (E-4): sc-514997

BACKGROUND

C9orf150 (chromosome 9 open reading frame 150) is a 231 amino acid protein encoded by a gene that maps to human chromosome 9p23. Chromosome 9 consists of about 145 million bases, represents 4% of the human genome and encodes nearly 900 genes. Thought to play a role in gender determination, deletion of the distal portion of 9p can lead to development of male to female sex reversal, the phenotype of a female with a male X,Y genotype. Hereditary hemorrhagic telangiectasia, which is characterized by harmful vascular defects, is associated with the chromosome 9 gene encoding endoglin protein, ENG. Familial dysautonomia is also associated with chromosome 9 though through the gene IKBKAP. Notably, chromosome 9 encompasses the largest interferon family gene cluster. Chromosome 9 is partnered with chromosome 22 in the translocation leading to the aberrant production of Bcr-Abl fusion protein often found in leukemias.

REFERENCES

1. Humphray, S.J., et al. 2004. DNA sequence and analysis of human chromosome 9. *Nature* 429: 369-374.
2. Coppo, P., et al. 2006. Bcr-Abl activates STAT3 via JAK and MEK pathways in human cells. *Br. J. Haematol.* 134: 171-179.
3. Zheng, X., et al. 2006. Bcr and its mutants, the reciprocal t(9;22)-associated Abl/Bcr fusion proteins, differentially regulate the cytoskeleton and cell motility. *BMC Cancer* 7: 262.
4. Burmeister, T., et al. 2007. Atypical Bcr-Abl mRNA transcripts in adult acute lymphoblastic leukemia. *Haematologica* 92: 1699-1702.
5. Cottin, V., et al. 2007. Pulmonary vascular manifestations of hereditary hemorrhagic telangiectasia (Rendu-Osler disease). *Respiration* 74: 361-378.

CHROMOSOMAL LOCATION

Genetic locus: LURAP1L (human) mapping to 9p23; Lurap1l (mouse) mapping to 4 C3.

SOURCE

LURAP1L (E-4) is a mouse monoclonal antibody raised against amino acids 77-228 mapping at the C-terminus of LURAP1L of human origin.

PRODUCT

Each vial contains 200 µg IgG₁ kappa light chain in 1.0 ml of PBS with < 0.1% sodium azide and 0.1% gelatin.

LURAP1L (E-4) is available conjugated to agarose (sc-514997 AC), 500 µg/0.25 ml agarose in 1 ml, for IP; to HRP (sc-514997 HRP), 200 µg/ml, for WB, IHC(P) and ELISA; to either phycoerythrin (sc-514997 PE), fluorescein (sc-514997 FITC), Alexa Fluor® 488 (sc-514997 AF488), Alexa Fluor® 546 (sc-514997 AF546), Alexa Fluor® 594 (sc-514997 AF594) or Alexa Fluor® 647 (sc-514997 AF647), 200 µg/ml, for WB (RGB), IF, IHC(P) and FCM; and to either Alexa Fluor® 680 (sc-514997 AF680) or Alexa Fluor® 790 (sc-514997 AF790), 200 µg/ml, for Near-Infrared (NIR) WB, IF and FCM.

Alexa Fluor® is a trademark of Molecular Probes, Inc., Oregon, USA

APPLICATIONS

LURAP1L (E-4) is recommended for detection of LURAP1L of mouse, rat and human origin by Western Blotting (starting dilution 1:100, dilution range 1:100-1:1000), immunoprecipitation [1-2 µg per 100-500 µg of total protein (1 ml of cell lysate)], immunofluorescence (starting dilution 1:50, dilution range 1:50-1:500) and solid phase ELISA (starting dilution 1:30, dilution range 1:30-1:3000).

Suitable for use as control antibody for LURAP1L siRNA (h): sc-92881, D4Bwg0951e siRNA (m): sc-142825, LURAP1L shRNA Plasmid (h): sc-92881-SH, D4Bwg0951e shRNA Plasmid (m): sc-142825-SH, LURAP1L shRNA (h) Lentiviral Particles: sc-92881-V and D4Bwg0951e shRNA (m) Lentiviral Particles: sc-142825-V.

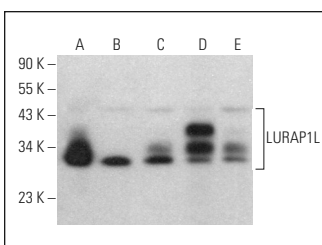
Molecular Weight of LURAP1L: 25 kDa.

Positive Controls: PC-3 cell lysate: sc-2220, U-87 MG cell lysate: sc-2411 or T-47D cell lysate: sc-2293.

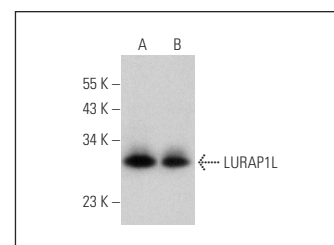
RECOMMENDED SUPPORT REAGENTS

To ensure optimal results, the following support reagents are recommended: 1) Western Blotting: use m-IgGκ BP-HRP: sc-516102 or m-IgGκ BP-HRP (Cruz Marker): sc-516102-CM (dilution range: 1:1000-1:10000), Cruz Marker™ Molecular Weight Standards: sc-2035, UltraCruz® Blocking Reagent: sc-516214 and Western Blotting Luminol Reagent: sc-2048. 2) Immunoprecipitation: use Protein A/G PLUS-Agarose: sc-2003 (0.5 ml agarose/2.0 ml). 3) Immunofluorescence: use m-IgGκ BP-FITC: sc-516140 or m-IgGκ BP-PE: sc-516141 (dilution range: 1:50-1:200) with UltraCruz® Mounting Medium: sc-24941 or UltraCruz® Hard-set Mounting Medium: sc-359850.

DATA



LURAP1L (E-4): sc-514997. Western blot analysis of LURAP1L expression in T-47D (A), HT-1080 (B), F9 (C), C3H/10T1/2 (D) and Neuro-2A (E) whole cell lysates.



LURAP1L (E-4): sc-514997. Western blot analysis of LURAP1L expression in PC-3 (A) and U-87 MG (B) whole cell lysates.

STORAGE

Store at 4° C, **DO NOT FREEZE**. Stable for one year from the date of shipment. Non-hazardous. No MSDS required.

RESEARCH USE

For research use only, not for use in diagnostic procedures.

PROTOCOLS

See our web site at www.scbt.com for detailed protocols and support products.