

# C5orf60 (A-9): sc-515052

## BACKGROUND

With 181 million base pairs encoding around 1,000 genes, chromosome 5 is about 6% of human genomic DNA. It is associated with Cockayne syndrome through the ERCC8 gene and familial adenomatous polyposis through the adenomatous polyposis coli (APC) tumor suppressor gene. Treacher Collins syndrome is also chromosome 5 associated and is caused by insertions or deletions within the TCOF1 gene. Deletion of the p arm of chromosome 5 leads to Cri du chat syndrome. Deletion of 5q or chromosome 5 altogether is common in therapy-related acute myelogenous leukemias and myelodysplastic syndrome. The C5orf60 gene product has been provisionally designated C5orf60 pending further characterization.

## REFERENCES

- Dixon, M.J., et al. 1991. The gene for Treacher Collins syndrome maps to the long arm of chromosome 5. *Am. J. Hum. Genet.* 49: 17-22.
- Saltman, D.L., et al. 1993. A physical map of 15 loci on human chromosome 5q23-q33 by two-color fluorescence *in situ* hybridization. *Genomics* 16: 726-732.
- Kadmon, M., et al. 2001. Duodenal adenomatosis in familial adenomatous polyposis coli. A review of the literature and results from the Heidelberg Polyposis Register. *Int. J. Colorectal Dis.* 16: 63-75.
- South, S.T., et al. 2006. A new genomic mechanism leading to Cri-du-chat syndrome. *Am. J. Med. Genet. A* 140A: 2714-2720.
- Aretz, S., et al. 2007. Somatic APC mosaicism: a frequent cause of familial adenomatous polyposis (FAP). *Hum. Mutat.* 28: 985-992.
- Cleaver, J.E., et al. 2007. Cockayne syndrome exhibits dysregulation of p21 and other gene products that may be independent of transcription-coupled repair. *Neuroscience* 145: 1300-1308.

## CHROMOSOMAL LOCATION

Genetic locus: C5orf60 (human) mapping to 5q35.3.

## SOURCE

C5orf60 (A-9) is a mouse monoclonal antibody raised against amino acids 22-95 mapping near the N-terminus of C5orf60 of human origin.

## PRODUCT

Each vial contains 200 µg IgG<sub>1</sub> kappa light chain in 1.0 ml of PBS with < 0.1% sodium azide and 0.1% gelatin.

C5orf60 (A-9) is available conjugated to agarose (sc-515052 AC), 500 µg/0.25 ml agarose in 1 ml, for IP; to HRP (sc-515052 HRP), 200 µg/ml, for WB, IHC(P) and ELISA; to either phycoerythrin (sc-515052 PE), fluorescein (sc-515052 FITC), Alexa Fluor® 488 (sc-515052 AF488), Alexa Fluor® 546 (sc-515052 AF546), Alexa Fluor® 594 (sc-515052 AF594) or Alexa Fluor® 647 (sc-515052 AF647), 200 µg/ml, for WB (RGB), IF, IHC(P) and FCM; and to either Alexa Fluor® 680 (sc-515052 AF680) or Alexa Fluor® 790 (sc-515052 AF790), 200 µg/ml, for Near-Infrared (NIR) WB, IF and FCM.

Alexa Fluor® is a trademark of Molecular Probes, Inc., Oregon, USA

## APPLICATIONS

C5orf60 (A-9) is recommended for detection of C5orf60 of human origin by Western Blotting (starting dilution 1:100, dilution range 1:100-1:1000), immunoprecipitation [1-2 µg per 100-500 µg of total protein (1 ml of cell lysate)], immunofluorescence (starting dilution 1:50, dilution range 1:50-1:500) and solid phase ELISA (starting dilution 1:30, dilution range 1:30-1:3000).

Suitable for use as control antibody for C5orf60 siRNA (h): sc-91611, C5orf60 shRNA Plasmid (h): sc-91611-SH and C5orf60 shRNA (h) Lentiviral Particles: sc-91611-V.

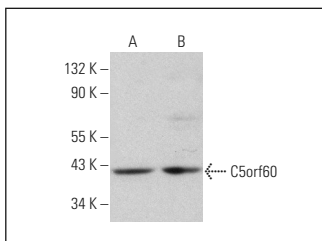
Molecular Weight of C5orf60: 39 kDa.

Positive Controls: HEK293 whole cell lysate: sc-45136, Hep G2 cell lysate: sc-2227 or HeLa whole cell lysate: sc-2200.

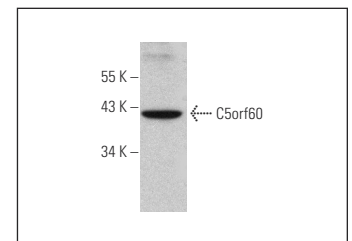
## RECOMMENDED SUPPORT REAGENTS

To ensure optimal results, the following support reagents are recommended: 1) Western Blotting: use m-IgGκ BPHRP: sc-516102 or m-IgGκ BPHRP (Cruz Marker): sc-516102-CM (dilution range: 1:1000-1:10000), Cruz Marker™ Molecular Weight Standards: sc-2035, UltraCruz® Blocking Reagent: sc-516214 and Western Blotting Luminol Reagent: sc-2048. 2) Immunoprecipitation: use Protein A/G PLUS-Agarose: sc-2003 (0.5 ml agarose/2.0 ml). 3) Immunofluorescence: use m-IgGκ BPFITC: sc-516140 or m-IgGκ BPE: sc-516141 (dilution range: 1:50-1:200) with UltraCruz® Mounting Medium: sc-24941 or UltraCruz® Hard-set Mounting Medium: sc-359850.

## DATA



C5orf60 (A-9): sc-515052. Western blot analysis of C5orf60 expression in Hep G2 (A) and HeLa (B) whole cell lysates.



C5orf60 (A-9): sc-515052. Western blot analysis of C5orf60 expression in HEK293 whole cell lysate.

## STORAGE

Store at 4° C, \*\*DO NOT FREEZE\*\*. Stable for one year from the date of shipment. Non-hazardous. No MSDS required.

## RESEARCH USE

For research use only, not for use in diagnostic procedures.

## PROTOCOLS

See our web site at [www.scbt.com](http://www.scbt.com) for detailed protocols and support products.