

MS4A8B (B-6): sc-515138

BACKGROUND

MS4A (membrane-spanning 4-domain family, subfamily A) is a large family of proteins that includes at least 26 members in mouse and humans. Flanked by amino- and carboxyl-cytoplasmic regions, MS4A family members contain four highly conserved transmembrane domains. MS4A8B (membrane-spanning 4-domains, subfamily A, member 8B), also known as 4SPAN4 (four-span transmembrane protein 4), is a 250 amino acid multi-pass membrane protein that is expressed in hematopoietic cells and tissue. The gene encoding MS4A8B maps to human chromosome 11, which houses over 1,400 genes and comprises nearly 4% of the human genome. Jervell and Lange-Nielsen syndrome, Jacobsen syndrome, Niemann-Pick disease, hereditary angioedema and Smith-Lemli-Opitz syndrome are associated with defects in genes that maps to chromosome 11.

REFERENCES

1. Fabiani, J.E., et al. 2000. Hereditary angioedema. Long-term follow-up of 88 patients. Experience of the Argentine Allergy and Immunology Institute. *Allergol. Immunopathol.* 28: 267-271.
2. Ishibashi, K., et al. 2001. Identification of a new multigene four-transmembrane family (MS4A) related to CD20, HTm4 and β subunit of the high-affinity IgE receptor. *Gene* 264: 87-93.
3. Liang, Y., et al. 2001. Identification of a CD20-, Fc ϵ R1 β -, and HTm4-related gene family: sixteen new MS4A family members expressed in human and mouse. *Genomics* 72: 119-127.
4. Liang, Y., et al. 2001. Structural organization of the human MS4A gene cluster on chromosome 11q12. *Immunogenetics* 53: 357-368.
5. Jira, P.E., et al. 2003. Smith-Lemli-Opitz syndrome and the DHCR7 gene. *Ann. Hum. Genet.* 67: 269-280.
6. Schuchman, E.H. 2007. The pathogenesis and treatment of acid sphingomyelinase-deficient Niemann-Pick disease. *J. Inherit. Metab. Dis.* 30: 654-663.
7. Siem, G., et al. 2008. Jervell and Lange-Nielsen syndrome in Norwegian children: aspects around cochlear implantation, hearing, and balance. *Ear Hear.* 29: 261-269.
8. Bhuiyan, Z.A., et al. 2008. An intronic mutation leading to incomplete skipping of exon-2 in KCNQ1 rescues hearing in Jervell and Lange-Nielsen syndrome. *Prog. Biophys. Mol. Biol.* 98: 319-327.
9. Coldren, C.D., et al. 2009. Chromosomal microarray mapping suggests a role for BSX and Neurogranin in neurocognitive and behavioral defects in the 11q terminal deletion disorder (Jacobsen syndrome). *Neurogenetics* 10: 89-95.

CHROMOSOMAL LOCATION

Genetic locus: MS4A8 (human) mapping to 11q12.2.

SOURCE

MS4A8B (B-6) is a mouse monoclonal antibody raised against amino acids 1-76 mapping at the N-terminus of MS4A8B of human origin.

PRODUCT

Each vial contains 200 μ g IgG₃ kappa light chain in 1.0 ml of PBS with < 0.1% sodium azide and 0.1% gelatin.

APPLICATIONS

MS4A8B (B-6) is recommended for detection of MS4A8B of human origin by Western Blotting (starting dilution 1:100, dilution range 1:100-1:1000), immunoprecipitation [1-2 μ g per 100-500 μ g of total protein (1 ml of cell lysate)], immunofluorescence (starting dilution 1:50, dilution range 1:50-1:500) and solid phase ELISA (starting dilution 1:30, dilution range 1:30-1:3000).

Suitable for use as control antibody for MS4A8B siRNA (h): sc-96686, MS4A8B shRNA Plasmid (h): sc-96686-SH and MS4A8B shRNA (h) Lentiviral Particles: sc-96686-V.

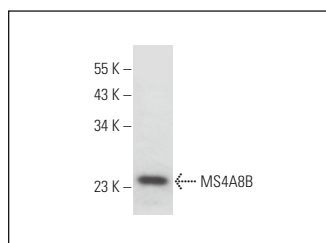
Molecular Weight of MS4A8B: 27 kDa.

Positive Controls: HL-60 whole cell lysate: sc-2209 or HEL 92.1.7 cell lysate: sc-2270.

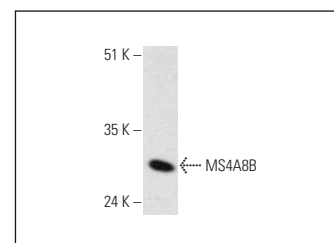
RECOMMENDED SUPPORT REAGENTS

To ensure optimal results, the following support reagents are recommended: 1) Western Blotting: use m-IgG κ BP-HRP: sc-516102 or m-IgG κ BP-HRP (Cruz Marker): sc-516102-CM (dilution range: 1:1000-1:10000), Cruz Marker™ Molecular Weight Standards: sc-2035, UltraCruz® Blocking Reagent: sc-516214 and Western Blotting Luminol Reagent: sc-2048. 2) Immunoprecipitation: use Protein A/G PLUS-Agarose: sc-2003 (0.5 ml agarose/2.0 ml). 3) Immunofluorescence: use m-IgG κ BP-FITC: sc-516140 or m-IgG κ BP-PE: sc-516141 (dilution range: 1:50-1:200) with UltraCruz® Mounting Medium: sc-24941 or UltraCruz® Hard-set Mounting Medium: sc-359850.

DATA



MS4A8B (B-6): sc-515138. Western blot analysis of MS4A8B expression in HL-60 whole cell lysate.



MS4A8B (B-6): sc-515138. Western blot analysis of MS4A8B expression in HEL 92.1.7 whole cell lysate.

STORAGE

Store at 4° C, **DO NOT FREEZE**. Stable for one year from the date of shipment. Non-hazardous. No MSDS required.

RESEARCH USE

For research use only, not for use in diagnostic procedures.