

Rab GDI β (D-2): sc-515143

BACKGROUND

Rab proteins, a family of Ras-related small GTP-binding proteins, play a key role in regulating intracellular vesicle trafficking. Rab GDP dissociation inhibitor (Rab GDI or GDI3) forms a soluble complex with Rab proteins and thereby prevents the exchange of GDP for GTP. In mammals, there exist two major isoforms, Rab GDI α (also known as XAP-4) and Rab GDI β . While the mammalian Rab GDI β -genes are ubiquitously expressed, the Rab GDI α genes are predominantly brain-specific. Since it is expressed predominantly in neural and sensory tissues, Rab GDI α may serve a specific function in neural signal transmission. The gene sequences for the Rab GDI proteins are extremely conserved in evolution, with substantial homology preserved across three eukaryotic kingdoms.

REFERENCES

1. Nishimura, N., et al. 1994. Molecular cloning and characterization of two Rab GDI species from rat brain: brain-specific and ubiquitous types. *J. Biol. Chem.* 269: 14191-14198.
2. Nishimura, N., et al. 1995. Cloning of a brain-type isoform of human Rab GDI and its expression in human neuroblastoma cell lines and tumor specimens. *Cancer Res.* 55: 5445-5450.
3. Araki, K., et al. 1995. Purification and characterization of Rab GDI β from rat brain. *Biochem. Biophys. Res. Commun.* 211: 296-305.
4. Bachner, D., et al. 1995. Expression patterns of two human genes coding for different Rab GDP-dissociation inhibitors (GDIs), extremely conserved proteins involved in cellular transport. *Hum. Mol. Genet.* 4: 701-708.
5. Sedlacek, Z., et al. 1999. The amphioxus Rab GDP-dissociation inhibitor (GDI) gene is neural-specific: implications for the evolution of chordate Rab GDI genes. *Mol. Biol. Evol.* 16: 1231-1237.

CHROMOSOMAL LOCATION

Genetic locus: GDI2 (human) mapping to 10p15.1; Gdi2 (mouse) mapping to 13 A1.

SOURCE

Rab GDI β (D-2) is a mouse monoclonal antibody raised against amino acids 376-407 mapping near the C-terminus of Rab GDI β of human origin.

PRODUCT

Each vial contains 200 μ g IgG_{2a} kappa light chain in 1.0 ml of PBS with < 0.1% sodium azide and 0.1% gelatin.

Rab GDI β (D-2) is available conjugated to agarose (sc-515143 AC), 500 μ g/0.25 ml agarose in 1 ml, for IP; to HRP (sc-515143 HRP), 200 μ g/ml, for WB, IHC(P) and ELISA; to either phycoerythrin (sc-515143 PE), fluorescein (sc-515143 FITC), Alexa Fluor[®] 488 (sc-515143 AF488), Alexa Fluor[®] 546 (sc-515143 AF546), Alexa Fluor[®] 594 (sc-515143 AF594) or Alexa Fluor[®] 647 (sc-515143 AF647), 200 μ g/ml, for WB (RGB), IF, IHC(P) and FCM; and to either Alexa Fluor[®] 680 (sc-515143 AF680) or Alexa Fluor[®] 790 (sc-515143 AF790), 200 μ g/ml, for Near-Infrared (NIR) WB, IF and FCM.

Alexa Fluor[®] is a trademark of Molecular Probes, Inc., Oregon, USA

APPLICATIONS

Rab GDI β (D-2) is recommended for detection of Rab GDI β of mouse, rat and human origin by Western Blotting (starting dilution 1:100, dilution range 1:100-1:1000), immunoprecipitation [1-2 μ g per 100-500 μ g of total protein (1 ml of cell lysate)], immunofluorescence (starting dilution 1:50, dilution range 1:50-1:500) and solid phase ELISA (starting dilution 1:30, dilution range 1:30-1:3000).

Suitable for use as control antibody for Rab GDI β siRNA (h): sc-106475, Rab GDI β siRNA (m): sc-152656, Rab GDI β shRNA Plasmid (h): sc-106475-SH, Rab GDI β shRNA Plasmid (m): sc-152656-SH, Rab GDI β shRNA (h) Lentiviral Particles: sc-106475-V and Rab GDI β shRNA (m) Lentiviral Particles: sc-152656-V.

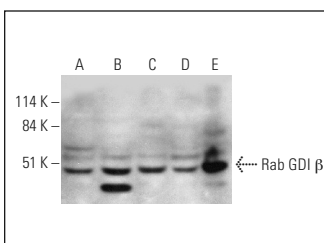
Molecular Weight of Rab GDI β : 50 kDa.

Positive Controls: MCF7 whole cell lysate: sc-2206, Hep G2 cell lysate: sc-2227 or HeLa whole cell lysate: sc-2200.

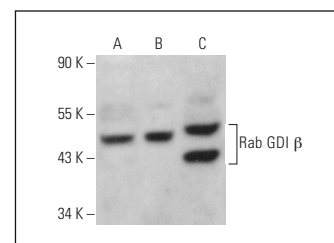
RECOMMENDED SUPPORT REAGENTS

To ensure optimal results, the following support reagents are recommended: 1) Western Blotting: use m-IgG κ BP-HRP: sc-516102 or m-IgG κ BP-HRP (Cruz Marker): sc-516102-CM (dilution range: 1:1000-1:10000), Cruz Marker[™] Molecular Weight Standards: sc-2035, UltraCruz[®] Blocking Reagent: sc-516214 and Western Blotting Luminol Reagent: sc-2048. 2) Immunoprecipitation: use Protein A/G PLUS-Agarose: sc-2003 (0.5 ml agarose/2.0 ml). 3) Immunofluorescence: use m-IgG κ BP-FITC: sc-516140 or m-IgG κ BP-PE: sc-516141 (dilution range: 1:50-1:200) with UltraCruz[®] Mounting Medium: sc-24941 or UltraCruz[®] Hard-set Mounting Medium: sc-359850.

DATA



Rab GDI β (D-2): sc-515143. Western blot analysis of Rab GDI β expression in HeLa (A), Hep G2 (B), MCF7 (C) and SH-SY5Y (D) whole cell lysates and human brain tissue extract (E).



Rab GDI β (D-2): sc-515143. Western blot analysis of Rab GDI β expression in HeLa (A), NIH/3T3 (B) and KNRK (C) whole cell lysates.

STORAGE

Store at 4° C, ****DO NOT FREEZE****. Stable for one year from the date of shipment. Non-hazardous. No MSDS required.

RESEARCH USE

For research use only, not for use in diagnostic procedures.

PROTOCOLS

See our web site at www.scbt.com for detailed protocols and support products.