

Se42 (C-10): sc-515185

BACKGROUND

Streptococcus is a large genus of Gram-positive bacteria that is comprised of over 50 different species, which are classified into α , β or γ hemolytic groups, based on their hemolytic properties. Carbohydrates present on the cell wall further classify β -hemolytic streptococci into Lancefield groups. *Streptococcus equi* subspecies *equi* (*S. equi*) is an equine host-adapted pathogen that causes strangles and belongs to Lancefield group C. Strangles is a highly prevalent, highly contagious disease characterized by tonsillitis and lymphadenitis of the head and neck. Some symptoms of strangles may include fever, depression, and submandibular and retropharyngeal lymph node enlargement that can lead to respiratory distress. The infection is transmitted by inhalation of *S. equi* or direct contact with mucopurulent discharge from an infected animal.

REFERENCES

- Guss, B., et al. 2009. Getting to grips with strangles: an effective multi-component recombinant vaccine for the protection of horses from *Streptococcus equi* infection. *PLoS Pathog.* 5: e1000584.
- Ivens, P.A.S., et al. 2011. Molecular characterisation of "strangles" outbreaks in the UK: the use of M-protein typing of *Streptococcus equi* ssp *equi*. *Equine Vet. J.* 43: 359-364.
- Merant, C., et al. 2011. Association of *Streptococcus equi* with equine monocytes. *Vet. Immunol. Immunopathol.* 143: 83-86.
- Waller, A.S., et al. 2011. *Streptococcus equi*: a pathogen restricted to one host. *J. Med. Microbiol.* 60: 1231-1240.
- Boyle, A. 2011. *Streptococcus equi* subspecies *equi* infection (strangles) in horses. *Compendium* 33: E1-E7.
- Flock, M., et al. 2012. Antiphagocytic function of an IgG glycosyl hydrolase from *Streptococcus equi* subsp. *equi* and its use as a vaccine component. *Infect. Immun.* 80: 2914-2919.
- Rodrigues, M.A., et al. 2012. Development of a novel mucosal vaccine against strangles by supercritical enhanced atomization spray-drying of *Streptococcus equi* extracts and evaluation in a mouse model. *Eur. J. Pharm. Biopharm.* 82: 392-400.

SOURCE

Se42 (C-10) is a mouse monoclonal antibody raised against amino acids 1-283 representing full length Se42 of *Streptococcus equi* subsp. *equi* origin.

PRODUCT

Each vial contains 200 μ g IgG₁ kappa light chain in 1.0 ml of PBS with < 0.1% sodium azide and 0.1% gelatin.

Se42 (C-10) is available conjugated to agarose (sc-515185 AC), 500 μ g/0.25 ml agarose in 1 ml, for IP; to HRP (sc-515185 HRP), 200 μ g/ml, for WB, IHC(P) and ELISA; to either phycoerythrin (sc-515185 PE), fluorescein (sc-515185 FITC), Alexa Fluor® 488 (sc-515185 AF488), Alexa Fluor® 546 (sc-515185 AF546), Alexa Fluor® 594 (sc-515185 AF594) or Alexa Fluor® 647 (sc-515185 AF647), 200 μ g/ml, for WB (RGB), IF, IHC(P) and FCM; and to either Alexa Fluor® 680 (sc-515185 AF680) or Alexa Fluor® 790 (sc-515185 AF790), 200 μ g/ml, for Near-Infrared (NIR) WB, IF and FCM.

APPLICATIONS

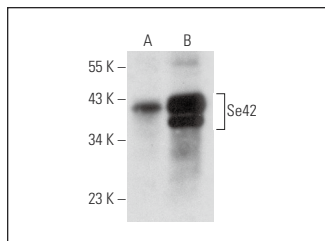
Se42 (C-10) is recommended for detection of Se42 of *S. equi* 4047, *S. zooepidemicus*, *MGCS10565* and many strains of *S. pyogenes* by Western Blotting (starting dilution 1:100, dilution range 1:100-1:1000), immunoprecipitation [1-2 μ g per 100-500 μ g of total protein (1 ml of cell lysate)], immunofluorescence (starting dilution 1:50, dilution range 1:50-1:500) and solid phase ELISA (starting dilution 1:30, dilution range 1:30-1:3000).

Positive Controls: *S. equi* (ATCC 53185) whole cell lysate or *S. equi* (ATCC 53186) whole cell lysate.

RECOMMENDED SUPPORT REAGENTS

To ensure optimal results, the following support reagents are recommended: 1) Western Blotting: use m-IgG κ BP-HRP: sc-516102 or m-IgG κ BP-HRP (Cruz Marker): sc-516102-CM (dilution range: 1:1000-1:10000), Cruz Marker™ Molecular Weight Standards: sc-2035, UltraCruz® Blocking Reagent: sc-516214 and Western Blotting Luminol Reagent: sc-2048. 2) Immunoprecipitation: use Protein A/G PLUS-Agarose: sc-2003 (0.5 ml agarose/2.0 ml). 3) Immunofluorescence: use m-IgG κ BP-FITC: sc-516140 or m-IgG κ BP-PE: sc-516141 (dilution range: 1:50-1:200) with UltraCruz® Mounting Medium: sc-24941 or UltraCruz® Hard-set Mounting Medium: sc-359850.

DATA



Se42 (C-10): sc-515185. Western blot analysis of Se42 expression in *S. equi* (ATCC 53185) (A) and *S. equi* (ATCC 53186) (B) whole cell lysates.

STORAGE

Store at 4° C, **DO NOT FREEZE**. Stable for one year from the date of shipment. Non-hazardous. No MSDS required.

RESEARCH USE

For research use only, not for use in diagnostic procedures.

PROTOCOLS

See our web site at www.scbt.com for detailed protocols and support products.

Alexa Fluor® is a trademark of Molecular Probes, Inc., Oregon, USA