

LIX1L (G-7): sc-515345

BACKGROUND

LIX1L (LIX1-like protein) is a 337 amino acid protein that belongs to the LIX1 family. The gene encoding LIX1L maps to human chromosome 1q21.1 and mouse chromosome 3 F2.1. Chromosome 1 spans 260 million base pairs, contains over 3,000 genes and comprises nearly 8% of the human genome. Chromosome 1 houses a large number of disease-associated genes, including those that are involved in familial adenomatous polyposis, Stickler syndrome, Parkinson's disease, Gaucher disease, schizophrenia and Usher syndrome. Aberrations in chromosome 1 are found in a variety of cancers, including head and neck cancer, malignant melanoma and multiple myeloma.

REFERENCES

1. Eudy, J.D., et al. 1998. Mutation of a gene encoding a protein with extracellular matrix motifs in Usher syndrome type IIa. *Science* 280: 1753-1757.
2. Tayebi, N., et al. 2001. Gaucher disease and parkinsonism: a phenotypic and genotypic characterization. *Mol. Genet. Metab.* 73: 313-321.
3. Plasilova, M., et al. 2004. Exclusion of an extracolonic disease modifier locus on chromosome 1p33-36 in a large Swiss familial adenomatous polyposis kindred. *Eur. J. Hum. Genet.* 12: 365-371.
4. Betarbet, R., et al. 2008. Fas-associated factor 1 and Parkinson's disease. *Neurobiol. Dis.* 31: 309-315.
5. Holliday, E.G., et al. 2009. Strong evidence for a novel schizophrenia risk locus on chromosome 1p31.1 in homogeneous pedigrees from Tamil Nadu, India. *Am. J. Psychiatry* 166: 206-215.

CHROMOSOMAL LOCATION

Genetic locus: LIX1L (human) mapping to 1q21.1.

SOURCE

LIX1L (G-7) is a mouse monoclonal antibody specific for an epitope mapping between amino acids 2-26 at the N-terminus of LIX1L of human origin.

PRODUCT

Each vial contains 200 µg IgG_{2b} kappa light chain in 1.0 ml of PBS with < 0.1% sodium azide and 0.1% gelatin.

LIX1L (G-7) is available conjugated to agarose (sc-515345 AC), 500 µg/0.25 ml agarose in 1 ml, for IP; to HRP (sc-515345 HRP), 200 µg/ml, for WB, IHC(P) and ELISA; to either phycoerythrin (sc-515345 PE), fluorescein (sc-515345 FITC), Alexa Fluor® 488 (sc-515345 AF488), Alexa Fluor® 546 (sc-515345 AF546), Alexa Fluor® 594 (sc-515345 AF594) or Alexa Fluor® 647 (sc-515345 AF647), 200 µg/ml, for WB (RGB), IF, IHC(P) and FCM; and to either Alexa Fluor® 680 (sc-515345 AF680) or Alexa Fluor® 790 (sc-515345 AF790), 200 µg/ml, for Near-Infrared (NIR) WB, IF and FCM.

Blocking peptide available for competition studies, sc-515345 P, (100 µg peptide in 0.5 ml PBS containing < 0.1% sodium azide and 0.2% stabilizer protein).

Alexa Fluor® is a trademark of Molecular Probes, Inc., Oregon, USA

APPLICATIONS

LIX1L (G-7) is recommended for detection of LIX1L of human origin by Western Blotting (starting dilution 1:100, dilution range 1:100-1:1000), immunoprecipitation [1-2 µg per 100-500 µg of total protein (1 ml of cell lysate)], immunofluorescence (starting dilution 1:50, dilution range 1:50-1:500) and solid phase ELISA (starting dilution 1:30, dilution range 1:30-1:3000).

Suitable for use as control antibody for LIX1L siRNA (h): sc-78637, LIX1L shRNA Plasmid (h): sc-78637-SH and LIX1L shRNA (h) Lentiviral Particles: sc-78637-V.

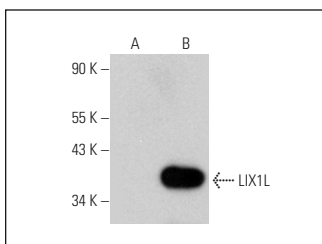
Molecular Weight of LIX1L: 37 kDa.

Positive Controls: LIX1L (h): 293T Lysate: sc-115328.

RECOMMENDED SUPPORT REAGENTS

To ensure optimal results, the following support reagents are recommended: 1) Western Blotting: use m-IgGκ BP-HRP: sc-516102 or m-IgGκ BP-HRP (Cruz Marker): sc-516102-CM (dilution range: 1:1000-1:10000), Cruz Marker™ Molecular Weight Standards: sc-2035, UltraCruz® Blocking Reagent: sc-516214 and Western Blotting Luminol Reagent: sc-2048. 2) Immunoprecipitation: use Protein A/G PLUS-agarose: sc-2003 (0.5 ml agarose/2.0 ml). 3) Immunofluorescence: use m-IgGκ BP-FITC: sc-516140 or m-IgGκ BP-PE: sc-516141 (dilution range: 1:50-1:200) with UltraCruz® Mounting Medium: sc-24941 or UltraCruz® Hard-set Mounting Medium: sc-359850.

DATA



LIX1L (G-7): sc-515345. Western blot analysis of LIX1L expression in non-transfected: sc-117752 (A) and human LIX1L transfected: sc-115328 (B) 293T whole cell lysates.

STORAGE

Store at 4° C, **DO NOT FREEZE**. Stable for one year from the date of shipment. Non-hazardous. No MSDS required.

RESEARCH USE

For research use only, not for use in diagnostic procedures.

PROTOCOLS

See our web site at www.scbt.com for detailed protocols and support products.