

# CWF19L1 (F-3): sc-515502

## BACKGROUND

CWF19L1 (CWF19-like 1, cell cycle control) is a 538 amino acid protein belonging to the CWF19 family and exists as three alternatively spliced isoforms. CWF19L1 is encoded by a gene located on human chromosome 10, which spans nearly 135 million base pairs, makes up approximately 4.5% of total DNA in cells and encodes nearly 1,200 genes. Several protein-coding genes, including those that encode for chemokines, cadherins, excision repair proteins, early growth response factors (Egrs) and fibroblast growth receptors (FGFRs), are located on chromosome 10. Defects in some of the genes that map to chromosome 10 are associated with Charcot-Marie-Tooth disease, Jackson-Weiss syndrome, Usher syndrome, nonsyndromic deafness, Wolman's syndrome, Cowden syndrome, multiple endocrine neoplasia type 2 and porphyria.

## REFERENCES

- Jabs, E.W., et al. 1994. Jackson-Weiss and Crouzon syndromes are allelic with mutations in fibroblast growth factor receptor 2. *Nat. Genet.* 8: 275-279.
- Deloukas, P., et al. 2000. Report of the third international workshop on human chromosome 10 mapping and sequencing 1999. *Cytogenet. Cell Genet.* 90: 1-12.
- Gilbert, F. 2001. *Chromosome 10. Genet. Test.* 5: 69-82.
- Berger, P., et al. 2002. Molecular cell biology of Charcot-Marie-Tooth disease. *Neurogenetics* 4: 1-15.
- Teresi, R.E., et al. 2007. Cowden syndrome-affected patients with PTEN promoter mutations demonstrate abnormal protein translation. *Am. J. Hum. Genet.* 81: 756-767.
- Cho, M.Y., et al. 2008. First report of ovarian dysgerminoma in Cowden syndrome with germline PTEN mutation and PTEN-related 10q loss of tumor heterozygosity. *Am. J. Surg. Pathol.* 32: 1258-1264.

## CHROMOSOMAL LOCATION

Genetic locus: CWF19L1 (human) mapping to 10q24.31.

## SOURCE

CWF19L1 (F-3) is a mouse monoclonal antibody raised against amino acids 301-530 mapping near the C-terminus of CWF19L1 of human origin.

## PRODUCT

Each vial contains 200 µg IgG<sub>1</sub> kappa light chain in 1.0 ml of PBS with < 0.1% sodium azide and 0.1% gelatin.

CWF19L1 (F-3) is available conjugated to agarose (sc-515502 AC), 500 µg/0.25 ml agarose in 1 ml, for IP; to HRP (sc-515502 HRP), 200 µg/ml, for WB, IHC(P) and ELISA; to either phycoerythrin (sc-515502 PE), fluorescein (sc-515502 FITC), Alexa Fluor® 488 (sc-515502 AF488), Alexa Fluor® 546 (sc-515502 AF546), Alexa Fluor® 594 (sc-515502 AF594) or Alexa Fluor® 647 (sc-515502 AF647), 200 µg/ml, for WB (RGB), IF, IHC(P) and FCM; and to either Alexa Fluor® 680 (sc-515502 AF680) or Alexa Fluor® 790 (sc-515502 AF790), 200 µg/ml, for Near-Infrared (NIR) WB, IF and FCM.

## APPLICATIONS

CWF19L1 (F-3) is recommended for detection of CWF19L1 of human origin by Western Blotting (starting dilution 1:100, dilution range 1:100-1:1000), immunoprecipitation [1-2 µg per 100-500 µg of total protein (1 ml of cell lysate)], immunofluorescence (starting dilution 1:50, dilution range 1:50-1:500) and solid phase ELISA (starting dilution 1:30, dilution range 1:30-1:3000).

Suitable for use as control antibody for CWF19L1 siRNA (h): sc-90784, CWF19L1 shRNA Plasmid (h): sc-90784-SH and CWF19L1 shRNA (h) Lentiviral Particles: sc-90784-V.

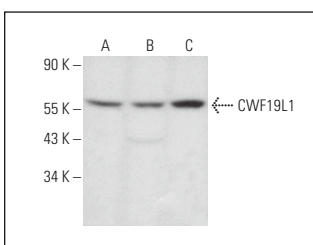
Molecular Weight of CWF19L1 isoforms 1/2/3: 61/28/46 kDa.

Positive Controls: Raji whole cell lysate: sc-364236, U-251-MG whole cell lysate: 364176 or RT-4 whole cell lysate: sc-364257.

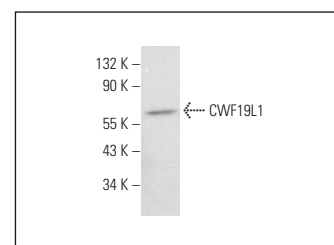
## RECOMMENDED SUPPORT REAGENTS

To ensure optimal results, the following support reagents are recommended: 1) Western Blotting: use m-IgGκ BP-HRP: sc-516102 or m-IgGκ BP-HRP (Cruz Marker): sc-516102-CM (dilution range: 1:1000-1:10000), Cruz Marker™ Molecular Weight Standards: sc-2035, UltraCruz® Blocking Reagent: sc-516214 and Western Blotting Luminol Reagent: sc-2048. 2) Immunoprecipitation: use Protein A/G PLUS-Agarose: sc-2003 (0.5 ml agarose/2.0 ml). 3) Immunofluorescence: use m-IgGκ BP-FITC: sc-516140 or m-IgGκ BP-PE: sc-516141 (dilution range: 1:50-1:200) with UltraCruz® Mounting Medium: sc-24941 or UltraCruz® Hard-set Mounting Medium: sc-359850.

## DATA



CWF19L1 (F-3): sc-515502. Western blot analysis of CWF19L1 expression in RT-4 (A), U-251-MG (B) and Raji (C) whole cell lysates.



CWF19L1 (F-3): sc-515502. Western blot analysis of CWF19L1 expression in NAMALWA whole cell lysate.

## STORAGE

Store at 4° C, \*\*DO NOT FREEZE\*\*. Stable for one year from the date of shipment. Non-hazardous. No MSDS required.

## RESEARCH USE

For research use only, not for use in diagnostic procedures.

## PROTOCOLS

See our web site at [www.scbt.com](http://www.scbt.com) for detailed protocols and support products.

Alexa Fluor® is a trademark of Molecular Probes, Inc., Oregon, USA