

# Mystique (B-8): sc-515630

## BACKGROUND

Mystique, also known as PDLIM2 (PDZ and LIM domain protein 2), PP6345 or SLIM, is a 352 amino acid protein that contains one LIM zinc-binding domain and one PDZ domain. Expressed as four isoforms that localize to either the cytoplasm/cytoskeleton or to the nucleus, Mystique is thought to function as an adapter protein that promotes cell attachment at the actin cytoskeleton. Mystique interacts with  $\alpha$ -actinin-1 and  $\alpha$ -actinin-4 and, in addition to its role in cell-cell interactions, is necessary for the proper migration of epithelial cells. Overexpression of Mystique suppresses anchorage-independent growth and enhances cell adhesion to Fibronectin and collagen (COL), an event that may facilitate the migratory capabilities of certain tumors. Due to its ability to enhance tumor migration, Mystique is thought to play a role in the progression of breast cancer and other malignant carcinomas.

## REFERENCES

1. Online Mendelian Inheritance in Man, OMIM™. 2002. Johns Hopkins University, Baltimore, MD. MIM Number: 609722. World Wide Web URL: <http://www.ncbi.nlm.nih.gov/omim/>
2. Shin, B.K., Wang, H., Yim, A.M., Le Naour, F., Brichory, F., Jang, J.H., Zhao, R., Puravs, E., Tra, J., Michael, C.W., Misek, D.E. and Hanash, S.M. 2003. Global profiling of the cell surface proteome of cancer cells uncovers an abundance of proteins with chaperone function. *J. Biol. Chem.* 278: 7607-7616.
3. Torrado, M., Senatorov, V.V., Trivedi, R., Fariss, R.N. and Tomarev, S.I. 2004. Pdlim2, a novel PDZ-LIM domain protein, interacts with  $\alpha$ -actinins and filamin A. *Invest. Ophthalmol. Vis. Sci.* 45: 3955-3963.
4. Wan, D., Gong, Y., Qin, W., Zhang, P., Li, J., Wei, L., Zhou, X., Li, H., Qiu, X., Zhong, F., He, L., Yu, J., Yao, G., Jiang, H., Qian, L., Yu, Y., Shu, H., Chen, X., Xu, H., Guo, M., Pan, Z., Chen, Y., Ge, C., Yang, S. and Gu, J. 2004. Large-scale cDNA transfection screening for genes related to cancer development and progression. *Proc. Natl. Acad. Sci. USA* 101: 15724-15729.
5. Tanaka, T., Soriano, M.A. and Grusby, M.J. 2005. SLIM is a nuclear ubiquitin E3 ligase that negatively regulates STAT signaling. *Immunity* 22: 729-736.
6. Loughran, G., Healy, N.C., Kiely, P.A., Huigsloot, M., Kedersha, N.L. and O'Connor, R. 2005. Mystique is a new Insulin-like growth factor-I-regulated PDZ-LIM domain protein that promotes cell attachment and migration and suppresses Anchorage-independent growth. *Mol. Biol. Cell* 16: 1811-1822.
7. Tanaka, T., Grusby, M.J. and Kaisho, T. 2007. PDLIM2-mediated termination of transcription factor NF $\kappa$ B activation by intranuclear sequestration and degradation of the p65 subunit. *Nat. Immunol.* 8: 584-591.

## STORAGE

Store at 4° C, \*\*DO NOT FREEZE\*\*. Stable for one year from the date of shipment. Non-hazardous. No MSDS required.

## PROTOCOLS

See our web site at [www.scbt.com](http://www.scbt.com) for detailed protocols and support products.

## CHROMOSOMAL LOCATION

Genetic locus: PDLIM2 (human) mapping to 8p21.3.

## SOURCE

Mystique (B-8) is a mouse monoclonal antibody raised against amino acids 14-84 mapping near the N-terminus of Mystique of human origin.

## PRODUCT

Each vial contains 200  $\mu$ g IgG<sub>1</sub> in 1.0 ml of PBS with < 0.1% sodium azide and 0.1% gelatin.

Mystique (B-8) is available conjugated to agarose (sc-515630 AC), 500  $\mu$ g/0.25 ml agarose in 1 ml, for IP; to HRP (sc-515630 HRP), 200  $\mu$ g/ml, for WB, IHC(P) and ELISA; to either phycoerythrin (sc-515630 PE), fluorescein (sc-515630 FITC), Alexa Fluor<sup>®</sup> 488 (sc-515630 AF488), Alexa Fluor<sup>®</sup> 546 (sc-515630 AF546), Alexa Fluor<sup>®</sup> 594 (sc-515630 AF594) or Alexa Fluor<sup>®</sup> 647 (sc-515630 AF647), 200  $\mu$ g/ml, for WB (RGB), IF, IHC(P) and FCM; and to either Alexa Fluor<sup>®</sup> 680 (sc-515630 AF680) or Alexa Fluor<sup>®</sup> 790 (sc-515630 AF790), 200  $\mu$ g/ml, for Near-Infrared (NIR) WB, IF and FCM.

Alexa Fluor<sup>®</sup> is a trademark of Molecular Probes, Inc., Oregon, USA

## APPLICATIONS

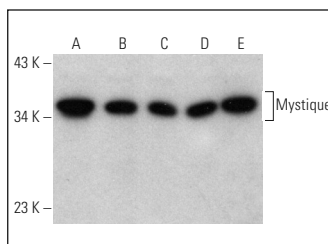
Mystique (B-8) is recommended for detection of Mystique of human origin by Western Blotting (starting dilution 1:100, dilution range 1:100-1:1000), immunoprecipitation [1-2  $\mu$ g per 100-500  $\mu$ g of total protein (1 ml of cell lysate)], immunofluorescence (starting dilution 1:50, dilution range 1:50-1:500) and solid phase ELISA (starting dilution 1:30, dilution range 1:30-1:3000).

Suitable for use as control antibody for Mystique siRNA (h): sc-75856, Mystique shRNA Plasmid (h): sc-75856-SH and Mystique shRNA (h) Lentiviral Particles: sc-75856-V.

Molecular Weight of Mystique: 38 kDa.

Positive Controls: HeLa whole cell lysate: sc-2200, Jurkat whole cell lysate: sc-2204 or ACHN whole cell lysate: sc-364365.

## DATA



Mystique (B-8): sc-515630. Western blot analysis of Mystique expression in JAR (A), HeLa (B), ACHN (C), Jurkat (D) and MCF7 (E) whole cell lysates.

## RESEARCH USE

For research use only, not for use in diagnostic procedures.