

RBM10 (2F12): sc-517062

BACKGROUND

Proteins containing RNA recognition motifs, including various hnRNP proteins, are implicated in the regulation of alternative splicing and protein components of snRNPs. The RBM (RNA-binding motif) gene family encodes proteins with an RNA binding motif that have been suggested to play a role in the modulation of apoptosis. RBM10 (RNA-binding protein 10), also known as GPATC9, MGC997, ZRANB5, GPATCH9 or RNA-binding protein S1-1, is a 930 amino acid nuclear protein that contains 2 RNA recognition motifs, a RanBP2-type zinc finger, a C₂H₂-type zinc finger and a G-patch domain. RBM10 binds to RNA homopolymers and may be involved in post-transcriptional processing, cancer proliferation and apoptosis. RBM10 may be significantly associated with the expression of the VEGF.

REFERENCES

- Inoue, A., et al. 1996. Molecular cloning of a RNA binding protein, S1-1. *Nucleic Acids Res.* 24: 2990-2997.
- Thiselton, D.L., et al. 2002. An integrated, functionally annotated gene map of the DXS8026-ELK1 interval on human Xp11.3-Xp11.23: potential hotspot for neurogenetic disorders. *Genomics* 79: 560-572.
- Gläser, B., et al. 2004. Molecular cytogenetic analysis of a *de novo* balanced X;autosome translocation: Evidence for predominant inactivation of the derivative X chromosome in a girl with multiple malformations. *Am. J. Med. Genet. A* 126A: 229-236.
- Sutherland, L.C., et al. 2005. RNA binding motif (RBM) proteins: a novel family of apoptosis modulators? *J. Cell. Biochem.* 94: 5-24.
- Martínez-Arribas, F., et al. 2006. Positive correlation between the expression of X-chromosome RBM genes (RBMX, RBM3, RBM10) and the proapoptotic Bax gene in human breast cancer. *J. Cell. Biochem.* 97: 1275-1282.
- Rintala-Maki, N.D., et al. 2007. Expression of RBM5-related factors in primary breast tissue. *J. Cell. Biochem.* 100: 1440-1458.
- Inoue, A., et al. 2008. S1-1 nuclear domains: characterization and dynamics as a function of transcriptional activity. *Biol. Cell* 100: 523-535.
- Martín-Garabato, E., et al. 2008. The small variant of the apoptosis-associated X-chromosome RBM10 gene is co-expressed with caspase-3 in breast cancer. *Cancer Genomics Proteomics* 5: 169-173.

CHROMOSOMAL LOCATION

Genetic locus: RBM10 (human) mapping to Xp11.23; Rbm10 (mouse) mapping to X A1.3.

SOURCE

RBM10 (2F12) is a mouse monoclonal antibody raised against amino acids 123-230 representing partial length RBM10 of human origin.

PRODUCT

Each vial contains 100 µg IgG₁ kappa light chain in 1.0 ml PBS with < 0.1% sodium azide and 0.1% gelatin.

APPLICATIONS

RBM10 (2F12) is recommended for detection of RBM10 of mouse, rat and human origin by Western Blotting (starting dilution 1:200, dilution range 1:100-1:1000), immunoprecipitation [1-2 µg per 100-500 µg of total protein (1 ml of cell lysate)] and solid phase ELISA (starting dilution 1:30, dilution range 1:30-1:3000).

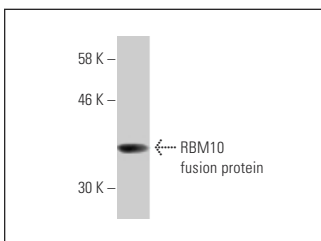
Suitable for use as control antibody for RBM10 siRNA (h): sc-76362, RBM10 siRNA (m): sc-76363, RBM10 shRNA Plasmid (h): sc-76362-SH, RBM10 shRNA Plasmid (m): sc-76363-SH, RBM10 shRNA (h) Lentiviral Particles: sc-76362-V and RBM10 shRNA (m) Lentiviral Particles: sc-76363-V.

Molecular Weight of RBM10: 104 kDa.

RECOMMENDED SUPPORT REAGENTS

To ensure optimal results, the following support reagents are recommended: 1) Western Blotting: use m-IgGκ BP-HRP: sc-516102 or m-IgGκ BP-HRP (Cruz Marker): sc-516102-CM (dilution range: 1:1000-1:10000), Cruz Marker™ Molecular Weight Standards: sc-2035, TBS Blotto A Blocking Reagent: sc-2333 and Western Blotting Luminol Reagent: sc-2048. 2) Immunoprecipitation: use Protein A/G PLUS-Agarose: sc-2003 (0.5 ml agarose/2.0 ml).

DATA



RBM10 (2F12): sc-517062. Western blot analysis of human recombinant RBM10 fusion protein.

STORAGE

Store at 4° C, ****DO NOT FREEZE****. Stable for one year from the date of shipment. Non-hazardous. No MSDS required.

RESEARCH USE

For research use only, not for use in diagnostic procedures.

PROTOCOLS

See our web site at www.scbt.com for detailed protocols and support products.