

EF-1 β (3A5): sc-517178

BACKGROUND

EF-1 (elongation factor-1) is a multi-protein complex that is responsible for the delivery of aminoacyl-tRNAs to the ribosome. The EF-1 protein complex is composed of four subunits: EF-1 α , EF-1 β , EF-1 δ and EF-1 γ . EF-1 β is a 225 amino acid member of the EF-1 β /EF-1 δ protein family and contains one GST C-terminal domain. Both EF-1 β and EF-1 δ stimulate the exchange of GDP bound to EF-1 α to GTP. Phosphorylation of EF-1 β affects the GDP/GTP exchange rate. Alternative splicing events of the gene that encodes EF-1 β result in three transcript variants that differ only in the 5' UTR.

REFERENCES

1. Cho, D.I., et al. 2003. Direct and biochemical interaction between dopamine D₃ receptor and elongation factor-1B β . *Life Sci.* 73: 2991-3004.
2. Cans, C., et al. 2003. Translationally controlled tumor protein acts as a guanine nucleotide dissociation inhibitor on the translation elongation factor eEF1A. *Proc. Natl. Acad. Sci. USA* 100: 13892-13897.
3. Ito, T., et al. 2004. Solution structure of human initiation factor eIF2 α reveals homology to the elongation factor eEF1B. *Structure* 12: 1693-1704.
4. McCracken, S., et al. 2005. Proteomic analysis of SRm160-containing complexes reveals a conserved association with cohesin. *J. Biol. Chem.* 280: 42227-42236.
5. Le Sourd, F., et al. 2006. eEF1B: At the dawn of the 21st century. *Biochim. Biophys. Acta* 1759: 13-31.
6. Le Sourd, F., et al. 2006. Cellular coexistence of two high molecular subsets of eEF1B complex. *FEBS Lett.* 580: 2755-2760.
7. Deng, S.S., et al. 2006. Comparative proteome analysis of breast cancer and adjacent normal breast tissues in human. *Genomics Proteomics Bioinformatics* 4: 165-172.
8. Mazan-Mamczarz, K., et al. 2006. Translational repression by RNA-binding protein TIAR. *Mol. Cell. Biol.* 26: 2716-2727.
9. Byun, H.O., et al. 2009. Cathepsin D and eukaryotic translation elongation factor 1 as promising markers of cellular senescence. *Cancer Res.* 69: 4638-4647.

CHROMOSOMAL LOCATION

Genetic locus: EEF1B2 (human) mapping to 2q33.3.

SOURCE

EF-1 β (3A5) is a mouse monoclonal antibody raised against amino acids 29-91 representing partial length EF-1 β of human origin.

PRODUCT

Each vial contains 100 μ g IgG_{2a} kappa light chain in 1.0 ml of PBS with < 0.1% sodium azide and 0.1% gelatin.

RESEARCH USE

For research use only, not for use in diagnostic procedures.

APPLICATIONS

EF-1 β (3A5) is recommended for detection of EF-1 β of human origin by Western Blotting (starting dilution 1:200, dilution range 1:100-1:1000), immunoprecipitation [1-2 μ g per 100-500 μ g of total protein (1 ml of cell lysate)] and solid phase ELISA (starting dilution 1:30, dilution range 1:30-1:3000).

Suitable for use as control antibody for EF-1 β siRNA (h): sc-77236, EF-1 β shRNA Plasmid (h): sc-77236-SH and EF-1 β shRNA (h) Lentiviral Particles: sc-77236-V.

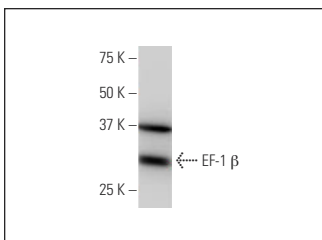
Molecular Weight of EF-1 β : 25 kDa.

Positive Controls: HeLa whole cell lysate: sc-2200.

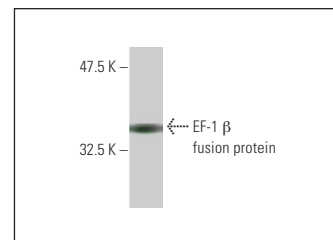
RECOMMENDED SUPPORT REAGENTS

To ensure optimal results, the following support reagents are recommended: 1) Western Blotting: use m-IgG κ BP-HRP: sc-516102 or m-IgG κ BP-HRP (Cruz Marker): sc-516102-CM (dilution range: 1:1000-1:10000), Cruz Marker™ Molecular Weight Standards: sc-2035, TBS Blotto A Blocking Reagent: sc-2333 and Western Blotting Luminol Reagent: sc-2048. 2) Immunoprecipitation: use Protein A/G PLUS-Agarose: sc-2003 (0.5 ml agarose/2.0 ml).

DATA



EF-1 β (3A5): sc-517178. Western blot analysis of EF-1 β expression in HeLa whole cell lysate.



EF-1 β (3A5): sc-517178. Western blot analysis of human recombinant EF-1 β fusion protein.

STORAGE

Store at 4° C, ****DO NOT FREEZE****. Stable for one year from the date of shipment. Non-hazardous. No MSDS required.

PROTOCOLS

See our web site at www.scbt.com for detailed protocols and support products.