

# Atg4C (287CT12.2.2): sc-517311

## BACKGROUND

Atg4C (ATG4 autophagy related 4 homolog C), also known as AUTL1 (AUT-like 1, cysteine endopeptidase), AUTL3 (AUT-like 3 cysteine endopeptidase), APG4-C, autophagin-3 or cysteine protease ATG4C, is a 458 amino acid tumor suppressor protein belonging to the peptidase C54 family. Encoded by a gene that maps to human chromosome 1p31.3, Atg4C is conserved in chimpanzee, canine, bovine, mouse, rat, chicken and zebrafish. Atg4C is highly expressed in skeletal muscle, heart, liver and testis, and localizes to cytoplasm. Functioning as a cysteine protease, which is necessary for autophagy, Atg4C cleaves the C-terminal region of either MAP1LC3, GABARAP2 or GABARAP. Atg4C is also inhibited by N-ethylmaleimide.

## REFERENCES

- Mariño, G., Salvador-Montoliu, N., Fueyo, A., Knecht, E., Mizushima, N. and López-Otín, C. 2007. Tissue-specific autophagy alterations and increased tumorigenesis in mice deficient in Atg4C/autophagin-3. *J. Biol. Chem.* 282: 18573-18583.
- Apel, A., Herr, I., Schwarz, H., Rodemann, H.P. and Mayer, A. 2008. Blocked autophagy sensitizes resistant carcinoma cells to radiation therapy. *Cancer Res.* 68: 1485-1494.
- Morselli, E., Tasdemir, E., Maiuri, M.C., Galluzzi, L., Kepp, O., Criollo, A., Vicencio, J.M., Soussi, T. and Kroemer, G. 2008. Mutant p53 protein localized in the cytoplasm inhibits autophagy. *Cell Cycle* 7: 3056-3061.
- Fujita, N., Hayashi-Nishino, M., Fukumoto, H., Omori, H., Yamamoto, A., Noda, T. and Yoshimori, T. 2008. An Atg4B mutant hampers the lipidation of LC3 paralogues and causes defects in autophagosome closure. *Mol. Biol. Cell* 19: 4651-4659.
- Kusama, Y., Sato, K., Kimura, N., Mitamura, J., Ohdaira, H. and Yoshida, K. 2009. Comprehensive analysis of expression pattern and promoter regulation of human autophagy-related genes. *Apoptosis* 14: 1165-1175.
- Maiuri, M.C., Tasdemir, E., Criollo, A., Morselli, E., Vicencio, J.M., Carnuccio, R. and Kroemer, G. 2009. Control of autophagy by oncogenes and tumor suppressor genes. *Cell Death Differ.* 16: 87-93.
- Betin, V.M. and Lane, J.D. 2009. Caspase cleavage of Atg4D stimulates GABARAP-L1 processing and triggers mitochondrial targeting and apoptosis. *J. Cell Sci.* 122: 2554-2566.
- Teo, Y.Y. and Sim, X. 2010. Patterns of linkage disequilibrium in different populations: implications and opportunities for lipid-associated loci identified from genome-wide association studies. *Curr. Opin. Lipidol.* 21: 104-115.
- Read, R., Savelieva, K., Baker, K., Hansen, G. and Vogel, P. 2010. Histopathological and neurological features of Atg4b knockout mice. *Vet. Pathol.* 48: 486-494.

## CHROMOSOMAL LOCATION

Genetic locus: ATG4C (human) mapping to 1p31.3; Atg4c (mouse) mapping to 4 C6.

## RESEARCH USE

For research use only, not for use in diagnostic procedures.

## SOURCE

Atg4C (287CT12.2.2) is a mouse monoclonal antibody raised against a recombinant protein corresponding to Atg4C of human origin.

## PRODUCT

Each vial contains 100 µg IgG<sub>1</sub> kappa light chain in 1.0 ml of PBS with < 0.1% sodium azide and 0.1% gelatin.

## APPLICATIONS

Atg4C (287CT12.2.2) is recommended for detection of Atg4C of mouse, rat and human origin by Western Blotting (starting dilution 1:200, dilution range 1:100-1:1000) and immunoprecipitation [1-2 µg per 100-500 µg of total protein (1 ml of cell lysate)].

Suitable for use as control antibody for Atg4C siRNA (h): sc-78773, Atg4C siRNA (m): sc-141324, Atg4C shRNA Plasmid (h): sc-78773-SH, Atg4C shRNA Plasmid (m): sc-141324-SH, Atg4C shRNA (h) Lentiviral Particles: sc-78773-V and Atg4C shRNA (m) Lentiviral Particles: sc-141324-V.

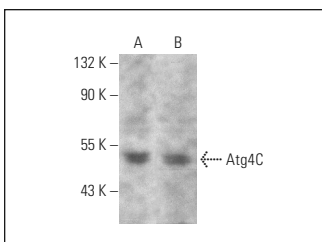
Molecular Weight of Atg4C: 52 kDa.

Positive Controls: c4 whole cell lysate: sc-364186 or human kidney extract: sc-363764.

## RECOMMENDED SUPPORT REAGENTS

To ensure optimal results, the following support reagents are recommended: 1) Western Blotting: use m-IgGκ BP-HRP: sc-516102 or m-IgGκ BP-HRP (Cruz Marker): sc-516102-CM (dilution range: 1:1000-1:10000), Cruz Marker™ Molecular Weight Standards: sc-2035, UltraCruz® Blocking Reagent: sc-516214 and Western Blotting Luminol Reagent: sc-2048. 2) Immunoprecipitation: use Protein A/G PLUS-Agarose: sc-2003 (0.5 ml agarose/2.0 ml).

## DATA



Atg4C (287CT12.2.2): sc-517311. Western blot analysis of Atg4C expression in c4 whole cell lysate (A) and human kidney tissue extract (B).

## STORAGE

Store at 4° C, \*\*DO NOT FREEZE\*\*. Stable for one year from the date of shipment. Non-hazardous. No MSDS required.

## PROTOCOLS

See our web site at [www.scbt.com](http://www.scbt.com) for detailed protocols and support products.