

UBTD1 (189CT14.5.4): sc-517372

BACKGROUND

Ubiquitin (Ub) is among the most phylogenetically conserved proteins known. The primary function of this small, 76 amino acid protein is to clear abnormal, foreign and improperly folded proteins by targeting them for degradation by the 26S Proteasome. Many ubiquitin-like proteins function as post-translational protein modifiers, such as members of the SUMO protein family, however some ubiquitin-like proteins regulate protein-protein interactions and cell cycle events, thereby functioning outside of the traditional ubiquitination pathway. UBTD1 (ubiquitin domain-containing protein 1) is a 227 amino acid protein containing one C-terminal ubiquitin-like (UBQ) domain. With only one UBQ domain, it is likely that UBTD1 is capable of conjugation to other proteins and mostly functions in similar ways to ubiquitin in the modification of post-translational proteins.

REFERENCES

- Hochstrasser, M. 1996. Ubiquitin-dependent protein degradation. *Annu. Rev. Genet.* 30: 405-439.
- Ciechanover, A. and Schwartz, A.L. 1998. The ubiquitin-proteasome pathway: the complexity and myriad functions of protein death. *Proc. Natl. Acad. Sci. USA* 95: 2727-2730.
- Conklin, D., Holderman, S., Whitmore, T.E., Maurer, M. and Feldhaus, A.L. 2000. Molecular cloning, chromosome mapping and characterization of UBQLN3 a testis-specific gene that contains an ubiquitin-like domain. *Gene* 249: 91-98.
- Su, H.L. and Li, S.S. 2002. Molecular features of human ubiquitin-like SUMO genes and their encoded proteins. *Gene* 296: 65-73.
- Glickman, M.H. and Ciechanover, A. 2002. The ubiquitin-proteasome proteolytic pathway: destruction for the sake of construction. *Physiol. Rev.* 82: 373-428.
- Hjerpe, R. and Rodríguez, M.S. 2008. Efficient approaches for characterizing ubiquitinated proteins. *Biochem. Soc. Trans.* 36: 823-827.
- Edelmann, M.J. and Kessler, B.M. 2008. Ubiquitin and ubiquitin-like specific proteases targeted by infectious pathogens: emerging patterns and molecular principles. *Biochim. Biophys. Acta* 1782: 809-816.

CHROMOSOMAL LOCATION

Genetic locus: UBTD1 (human) mapping to 10q24.1.

SOURCE

UBTD1 (189CT14.5.4) is a mouse monoclonal antibody raised against a recombinant protein corresponding to UBTD1 of human origin.

PRODUCT

Each vial contains 100 µg IgG₁ kappa light chain in 1.0 ml of PBS with < 0.1% sodium azide and 0.1% gelatin.

STORAGE

Store at 4° C, ****DO NOT FREEZE****. Stable for one year from the date of shipment. Non-hazardous. No MSDS required.

APPLICATIONS

UBTD1 (189CT14.5.4) is recommended for detection of UBTD1 of human origin by Western Blotting (starting dilution 1:200, dilution range 1:100-1:1000) and immunoprecipitation [1-2 µg per 100-500 µg of total protein (1 ml of cell lysate)].

Suitable for use as control antibody for UBTD1 siRNA (h): sc-90329, UBTD1 shRNA Plasmid (h): sc-90329-SH and UBTD1 shRNA (h) Lentiviral Particles: sc-90329-V.

Molecular Weight of UBTD1: 26 kDa.

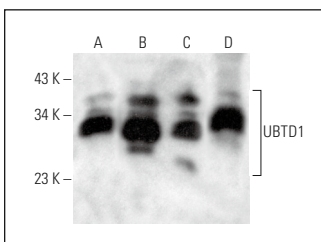
Positive Controls: A549 cell lysate: sc-2413, WI-38 whole cell lysate: sc-364260 or human breast extract: sc-363753.

RECOMMENDED SUPPORT REAGENTS

To ensure optimal results, the following support reagents are recommended:

1) Western Blotting: use m-IgGκ BP-HRP: sc-516102 or m-IgGκ BP-HRP (Cruz Marker): sc-516102-CM (dilution range: 1:1000-1:10000), Cruz Marker™ Molecular Weight Standards: sc-2035, UltraCruz® Blocking Reagent: sc-516214 and Western Blotting Luminol Reagent: sc-2048. 2) Immunoprecipitation: use Protein A/G PLUS-Agarose: sc-2003 (0.5 ml agarose/2.0 ml).

DATA



UBTD1 (189CT14.5.4): sc-517372. Western blot analysis of UBTD1 expression in A549 (A), ARPE-19 (B) and WI-38 (C) whole cell lysates and human breast tissue extract (D).

RESEARCH USE

For research use only, not for use in diagnostic procedures.

PROTOCOLS

See our web site at www.scbt.com for detailed protocols and support products.