

Integrin $\beta 3$ (NaM28-7D6): sc-51738

BACKGROUND

Integrins are heterodimers composed of noncovalently associated transmembrane α and β subunits. The 16 α and 8 β subunits heterodimerize to produce more than 20 different receptors. Most integrin receptors bind ligands that are components of the extracellular matrix, including Fibronectin, Collagen and Vitronectin. Certain integrins can also bind to soluble ligands, such as Fibrinogen, or to counterreceptors on adjacent cells such as the intracellular adhesion molecules (ICAMs), leading to aggregation of cells. Ligands serve to cross-link or cluster integrins by binding to adjacent integrin receptors; both receptor clustering and ligand occupancy are necessary for the activation of integrin-mediated responses. In addition to mediating cell adhesion and cytoskeletal organization, integrins function as signaling receptors. Signals transduced by integrins play a role in many biological processes, including cell growth, differentiation, migration and apoptosis.

REFERENCES

1. Davies, J., et al. 1989. The osteoclast functional antigen, implicated in the regulation of bone resorption, is biochemically related to the Vitronectin receptor. *J. Cell Biol.* 109: 1817-1826.
2. Kieffer, N. and Phillips, D.R. 1991. Platelet membrane glycoproteins: functions in cellular interactions. *Annu. Rev. Cell Biol.* 6: 329-357.
3. Bray, P.F. 1995. Inherited diseases of platelet glycoproteins: considerations for rapid molecular characterization. *Thromb. Haemost.* 72: 492-502.

CHROMOSOMAL LOCATION

Genetic locus: ITGB3 (human) mapping to 17q21.32.

SOURCE

Integrin $\beta 3$ (NaM28-7D6) is a mouse monoclonal antibody raised against Integrin $\beta 3$ of human origin.

PRODUCT

Each vial contains 200 μ g IgG₁ kappa light chain in 1.0 ml of PBS with < 0.1% sodium azide and 0.1% gelatin.

APPLICATIONS

Integrin $\beta 3$ (NaM28-7D6) is recommended for detection of Integrin $\beta 3$ of human origin by Western Blotting (starting dilution 1:200, dilution range 1:100-1:1000), immunoprecipitation [1-2 μ g per 100-500 μ g of total protein (1 ml of cell lysate)], immunofluorescence (starting dilution 1:50, dilution range 1:50-1:500) and flow cytometry (1 μ g per 1 x 10⁶ cells).

Suitable for use as control antibody for Integrin $\beta 3$ siRNA (h): sc-29375, Integrin $\beta 3$ shRNA Plasmid (h): sc-29375-SH and Integrin $\beta 3$ shRNA (h) Lentiviral Particles: sc-29375-V.

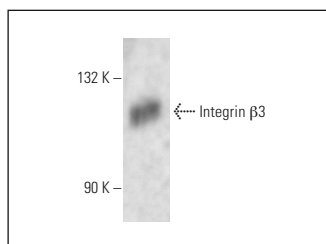
Molecular Weight of Integrin $\beta 3$: 125 kDa.

Positive Controls: MDA-MB-231 cell lysate: sc-2232 or human platelet extract: sc-363773.

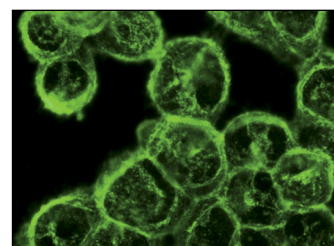
RECOMMENDED SUPPORT REAGENTS

To ensure optimal results, the following support reagents are recommended: 1) Western Blotting: use m-IgG κ BP-HRP: sc-516102 or m-IgG κ BP-HRP (Cruz Marker): sc-516102-CM (dilution range: 1:1000-1:10000), Cruz Marker[™] Molecular Weight Standards: sc-2035, UltraCruz[®] Blocking Reagent: sc-516214 and Western Blotting Luminol Reagent: sc-2048. 2) Immunoprecipitation: use Protein A/G PLUS-Agarose: sc-2003 (0.5 ml agarose/2.0 ml). 3) Immunofluorescence: use m-IgG κ BP-FITC: sc-516140 or m-IgG κ BP-PE: sc-516141 (dilution range: 1:50-1:200) with UltraCruz[®] Mounting Medium: sc-24941 or UltraCruz[®] Hard-set Mounting Medium: sc-359850.

DATA



Integrin $\beta 3$ (NaM28-7D6): sc-51738. Western blot analysis of Integrin $\beta 3$ expression in human platelet whole cell lysate.



Integrin $\beta 3$ (NaM28-7D6): sc-51738. Immunofluorescence staining of methanol-fixed HeLa cells showing membrane localization.

SELECT PRODUCT CITATIONS

1. Seoane, A.I., et al. 2010. The mojastin mutant Moj-DM induces apoptosis of the human melanoma SK-Mel-28, but not the mutant Moj-NN nor the non-mutated recombinant Moj-WN. *Toxicol.* 56: 391-401.
2. Teklemariam, T., et al. 2011. Functional analysis of a recombinant PIII-SVMP, GST-acocostatin; an apoptotic inducer of HUVEC and HeLa, but not SK-Mel-28 cells. *Toxicol.* 57: 646-656.
3. Lucena, S.E., et al. 2012. Anti-invasive and anti-adhesive activities of a recombinant disintegrin, r-iridistatin 2, derived from the Prairie rattlesnake (*Crotalus viridis viridis*). *Toxicol.* 60: 31-39.
4. Ngo, A.T., et al. 2017. Assessment of roles for the Rho-specific guanine nucleotide dissociation inhibitor (RhoGDI) Ly-GDI in platelet function: a spatial systems approach. *Am. J. Physiol., Cell Physiol.* 312: C527-C536.

STORAGE

Store at 4° C, **DO NOT FREEZE**. Stable for one year from the date of shipment. Non-hazardous. No MSDS required.

RESEARCH USE

For research use only, not for use in diagnostic procedures.



See **Integrin $\beta 3$ (D-11): sc-365679** for Integrin $\beta 3$ antibody conjugates, including AC, HRP, FITC, PE, and Alexa Fluor[®] 488, 546, 594, 647, 680 and 790.