

## IL-19 (C1): sc-517446

### BACKGROUND

IL-14 (high-molecular-weight B-cell growth factor or HMW-BCGF) is a protein that plays a significant role in the rapid proliferation of aggressive B-cell type non-Hodgkin's lymphoma. IL-19 and IL-20 are IL-10-related cytokines. IL-19 is involved in melanoma differentiation, and IL-20 plays an essential role in epidermal function and psoriasis. Like other interleukin molecules, IL-21 is a small secreted molecule, and it has potent effects on lymphoid cells. IL-21 is most closely related to IL-2 and IL-15 and has a role in the proliferation and maturation of natural killer cell populations from bone marrow, in the proliferation of mature B-cell populations co-stimulated with anti-CD40, and in the proliferation of T cells co-stimulated with anti-CD3.

### REFERENCES

1. Ford, R., Tamayo, A., Martin, B., Niu, K., Claypool, K., Cabanillas, F. and Ambrus, J., Jr. 1995. Identification of B-cell growth factors (interleukin-14; high molecular weight-B-cell growth factors) in effusion fluids from patients with aggressive B-cell lymphomas. *Blood* 86: 283-293.
2. Gallagher, G., Dickensheets, H., Eskdale, J., Izotova, L.S., Mirochnitchenko, O.V., Peat, J.D., Vazquez, N., Pestka, S., Donnelly, R.P. and Kotenko, S.V. 2000. Cloning, expression and initial characterization of interleukin-19 (IL-19), a novel homologue of human interleukin-10 (IL-10). *Genes Immun.* 1: 442-450.
3. Parrish-Novak, J., Dillon, S.R., Nelson, A., Hammond, A., Sprecher, C., Gross, J.A., Johnston, J., Madden, K., Xu, W., West, J., Schrader, S., Burkhead, S., Heipel, M., Brandt, C., et al. 2000. Interleukin 21 and its receptor are involved in NK cell expansion and regulation of lymphocyte function. *Nature* 408: 57-63.
4. Blumberg, H., Conklin, D., Xu, W.F., Grossmann, A., Brender, T., Carollo, S., Eagan, M., Foster, D., Haldeman, B.A., Hammond, A., Haugen, H., Jelinek, L., Kelly, J.D., Madden, K., Maurer, M.F., et al. 2001. Interleukin 20: discovery, receptor identification, and role in epidermal function. *Cell* 104: 9-19.
5. Vosshenrich, C.A. and Di, Santo, J.P. 2001. Cytokines: IL-21 joins the  $\gamma$ c-dependent network? *Curr. Biol.* 11: R175-R177.

### CHROMOSOMAL LOCATION

Genetic locus: IL19 (human) mapping to 1q32.1.

### SOURCE

IL-19 (C1) is a mouse monoclonal antibody raised against a recombinant protein corresponding to amino acids 25-177 of IL-19 of human origin.

### PRODUCT

Each vial contains 100  $\mu$ g IgG<sub>2b</sub> kappa light chain in 1.0 ml of PBS with < 0.1% sodium azide and 0.1% gelatin.

### STORAGE

Store at 4° C, **\*\*DO NOT FREEZE\*\***. Stable for one year from the date of shipment. Non-hazardous. No MSDS required.

### APPLICATIONS

IL-19 (C1) is recommended for detection of IL-19 of human origin by Western Blotting (starting dilution 1:200, dilution range 1:100-1:1000), immunoprecipitation [1-2  $\mu$ g per 100-500  $\mu$ g of total protein (1 ml of cell lysate)], immunofluorescence (starting dilution 1:50, dilution range 1:50-1:500), immunohistochemistry (including paraffin-embedded sections) (starting dilution 1:50, dilution range 1:50-1:500) and solid phase ELISA (starting dilution 1:30, dilution range 1:30-1:3000).

Suitable for use as control antibody for IL-19 siRNA (h): sc-39659, IL-19 shRNA Plasmid (h): sc-39659-SH and IL-19 shRNA (h) Lentiviral Particles: sc-39659-V.

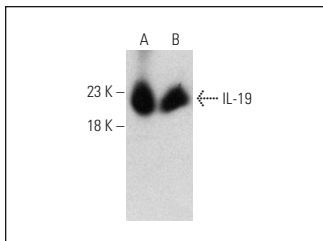
Molecular Weight of IL-19: 18 kDa.

Positive Controls: human breast extract: sc-363753 or human skin extract: sc-363777.

### RECOMMENDED SUPPORT REAGENTS

To ensure optimal results, the following support reagents are recommended: 1) Western Blotting: use m-IgG $\kappa$  BP-HRP: sc-516102 or m-IgG $\kappa$  BP-HRP (Cruz Marker): sc-516102-CM (dilution range: 1:1000-1:10000), Cruz Marker™ Molecular Weight Standards: sc-2035, TBS Blotto A Blocking Reagent: sc-2333 and Western Blotting Luminol Reagent: sc-2048. 2) Immunoprecipitation: use Protein A/G PLUS-Agarose: sc-2003 (0.5 ml agarose/2.0 ml). 3) Immunofluorescence: use m-IgG $\kappa$  BP-FITC: sc-516140 or m-IgG $\kappa$  BP-PE: sc-516141 (dilution range: 1:50-1:200) with UltraCruz® Mounting Medium: sc-24941 or UltraCruz® Hard-set Mounting Medium: sc-359850.

### DATA



IL-19 (C1): sc-517446. Western blot analysis of IL-19 expression in human breast (A) and human skin (B) tissue extracts.

### RESEARCH USE

For research use only, not for use in diagnostic procedures.

### PROTOCOLS

See our web site at [www.scbt.com](http://www.scbt.com) for detailed protocols and support products.