

PLAC9 (F7): sc-517453

BACKGROUND

PLAC9 (placenta-specific 9) is a 97 amino acid protein that is predominantly expressed in placenta and belongs to the PLAC9 family. Human PLAC9 shares 73% identity with mouse PLAC9 and is encoded by a gene that maps to human chromosome 10q22.3. Chromosome 10 encodes nearly 1,200 genes within 135 million bases, making up approximately 4.5% of the human genome. Several protein-coding genes, including those that encode for chemokines, cadherins, excision repair proteins, early growth response factors (Egrs) and fibroblast growth receptors (FGFRs), are located on chromosome 10. Defects in genes that map to chromosome 10 are associated with Charcot-Marie-Tooth disease, Jackson-Weiss syndrome, Usher syndrome, nonsyndromic deafness, Wolman's syndrome, Cowden syndrome, multiple endocrine neoplasia type 2 and porphyria.

REFERENCES

- Jabs, E.W., Li, X., Scott, A.F., Meyers, G., Chen, W., Eccles, M., Mao, J.I., Charnas, L.R., Jackson, C.E. and Jaye, M. 1994. Jackson-Weiss and Crouzon syndromes are allelic with mutations in fibroblast growth factor receptor 2. *Nat. Genet.* 8: 275-279.
- Deloukas, P., French, L., Meitinger, T. and Moschonas, N.K. 2000. Report of the third international workshop on human chromosome 10 mapping and sequencing 1999. *Cytogenet. Cell Genet.* 90: 1-12.
- Gilbert, F. 2001. *Chromosome 10. Genet. Test.* 5: 69-82.
- Berger, P., Young, P. and Suter, U. 2002. Molecular cell biology of Charcot-Marie-Tooth disease. *Neurogenetics* 4: 1-15.
- Galaviz-Hernandez, C., Stagg, C., de Ridder, G., Tanaka, T.S., Ko, M.S., Schlessinger, D. and Nagaraja, R. 2003. Plac8 and Plac9, novel placental-enriched genes identified through microarray analysis. *Gene* 309: 81-89.
- Cho, M.Y., Kim, H.S., Eng, C., Kim, D.S., Kang, S.J., Eom, M., Yi, S.Y. and Bronner, M.P. 2008. First report of ovarian dysgerminoma in Cowden syndrome with germline PTEN mutation and PTEN-related 10q loss of tumor heterozygosity. *Am. J. Surg. Pathol.* 32: 1258-1264.
- Hofmann, S., Franke, A., Fischer, A., Jacobs, G., Nothnagel, M., Gaede, K.I., Schürmann, M., Müller-Quernheim, J., Krawczak, M., Rosenstiel, P. and Schreiber, S. 2008. Genome-wide association study identifies ANXA11 as a new susceptibility locus for sarcoidosis. *Nat. Genet.* 40: 1103-1106.
- Laugel, V., Dalloz, C., Durand, M., Sauvanud, F., Kristensen, U., Vincent, M.C., Pasquier, L., Odent, S., Cormier-Daire, V., Gener, B., Tobias, E.S., Tolmie, J.L., Martin-Coignard, D., Drouin-Garraud, V., Heron, D., Journel, H., Raffo, E., Vigneron, J., Lyonnet, S., Murday, V., et al. 2010. Mutation update for the CSB/ERCC6 and CSA/ERCC8 genes involved in Cockayne syndrome. *Hum. Mutat.* 31: 113-126.

CHROMOSOMAL LOCATION

Genetic locus: PLAC9 (human) mapping to 10q22.3.

SOURCE

PLAC9 (F7) is a mouse monoclonal antibody raised against a recombinant protein corresponding to amino acids 23-97 of PLAC9 of human origin.

PRODUCT

Each vial contains 100 µg IgG_{2a} kappa light chain in 1.0 ml of PBS with < 0.1% sodium azide and 0.1% gelatin.

APPLICATIONS

PLAC9 (F7) is recommended for detection of PLAC9 of human origin by Western Blotting (starting dilution 1:200, dilution range 1:100-1:1000), immunoprecipitation [1-2 µg per 100-500 µg of total protein (1 ml of cell lysate)], immunofluorescence (starting dilution 1:50, dilution range 1:50-1:500), immunohistochemistry (including paraffin-embedded sections) (starting dilution 1:50, dilution range 1:50-1:500) and solid phase ELISA (starting dilution 1:30, dilution range 1:30-1:3000).

Suitable for use as control antibody for PLAC9 siRNA (h): sc-90450, PLAC9 shRNA Plasmid (h): sc-90450-SH and PLAC9 shRNA (h) Lentiviral Particles: sc-90450-V.

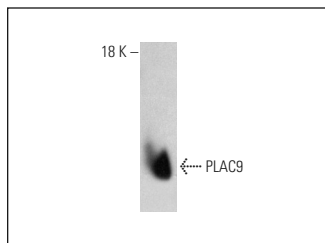
Molecular Weight of PLAC9: 10 kDa.

Positive Controls: human adipose tissue extract: sc-363750.

RECOMMENDED SUPPORT REAGENTS

To ensure optimal results, the following support reagents are recommended: 1) Western Blotting: use m-IgGκ BP-HRP: sc-516102 or m-IgGκ BP-HRP (Cruz Marker): sc-516102-CM (dilution range: 1:1000-1:10000), Cruz Marker™ Molecular Weight Standards: sc-2035, TBS Blotto A Blocking Reagent: sc-2333 and Western Blotting Luminol Reagent: sc-2048. 2) Immunoprecipitation: use Protein A/G PLUS-Agarose: sc-2003 (0.5 ml agarose/2.0 ml). 3) Immunofluorescence: use m-IgGκ BP-FITC: sc-516140 or m-IgGκ BP-PE: sc-516141 (dilution range: 1:50-1:200) with UltraCruz® Mounting Medium: sc-24941 or UltraCruz® Hard-set Mounting Medium: sc-359850.

DATA



PLAC9 (F7): sc-517453. Western blot analysis of PLAC9 expression in human adipose tissue extract.

STORAGE

Store at 4° C, **DO NOT FREEZE**. Stable for one year from the date of shipment. Non-hazardous. No MSDS required.

RESEARCH USE

For research use only, not for use in diagnostic procedures.