

HLA-E (4D12): sc-517455

BACKGROUND

Major histocompatibility complex (MHC) molecules, which include human leukocyte antigens (HLAs), form an integral part of the immune response system. They are cell-surface receptors that bind foreign peptides and present them to cytotoxic T lymphocytes (CTLs). MHC class I molecules consist of two polypeptide chains, an α or heavy chain and a non-covalently associated protein, β -2-Microglobulin. The differential structural properties of MHC class I and class II molecules account for their respective roles in activating different populations of T lymphocytes. HLA-A is a MHC class I heavy chain molecule that plays a central role in the immune system by presenting peptides derived from the endoplasmic reticulum lumen. HLA-B and HLA-C are proteins encoded by closely related genes that also exist in the MHC class I. HLA-E belongs to the HLA class I heavy chain paralogs. HLA-E is a heterodimer consisting of a heavy chain and a light chain. The heavy chain is anchored in the membrane. HLA-E binds a restricted subset of peptides derived from the leader peptides of other class I molecules.

REFERENCES

- Menier, C., et al. 2003. Characterization of monoclonal antibodies recognizing HLA-G or HLA-E: new tools to analyze the expression of nonclassical HLA class I molecules. *Hum. Immunol.* 64: 315-326.
- Mazzarino, P, et al. 2005. Identification of effector-memory CMV-specific T lymphocytes that kill CMV-infected target cells in an HLA-E-restricted fashion. *Eur. J. Immunol.* 35: 3240-3247.
- Palmisano, G.L., et al. 2005. HLA-E surface expression is independent of the availability of HLA class I signal sequence-derived peptides in human tumor cell lines. *Hum. Immunol.* 66: 1-12.
- Moya-Quiles, M.R., et al. 2005. Lack of association between HLA-E polymorphism and primary cutaneous melanoma in Spanish patients. *J. Dermatol. Sci.* 40: 62-64.
- Joly, E., et al. 2006. The orthology of HLA-E and H2-Qa1 is hidden by their concerted evolution with other MHC class I molecules. *Biol. Direct* 1: 2.
- Bhalla, A., et al. 2006. Comparison of the expression of human leukocyte antigen (HLA)-G and HLA-E in women with normal pregnancy and those with recurrent miscarriage. *Reproduction* 131: 583-589.
- Ishitani, A., et al. 2006. The involvement of HLA-E and -F in pregnancy. *J. Reprod. Immunol.* 69: 101-113.
- Lajoie, J., et al. 2006. Genetic variants in nonclassical major histocompatibility complex class I human leukocyte antigen (HLA)-E and HLA-G molecules are associated with susceptibility to heterosexual acquisition of HIV-1. *J. Infect. Dis.* 193: 298-301.

CHROMOSOMAL LOCATION

Genetic locus: HLA-E (human) mapping to 6p21.33.

SOURCE

HLA-E (4D12) is a mouse monoclonal antibody raised in HLA-B27 transgenic mice against the HLA-E protein of human origin.

PRODUCT

Each vial contains 200 μ g IgG₁ in 1.0 ml of PBS with < 0.1% sodium azide and 0.1% gelatin.

APPLICATIONS

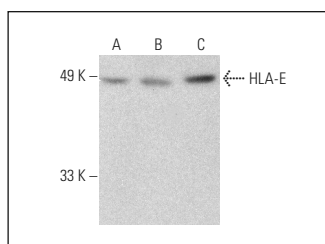
HLA-E (4D12) is recommended for detection of HLA-E of human origin by Western Blotting (starting dilution 1:200, dilution range 1:100-1:1000), immunoprecipitation [1-2 μ g per 100-500 μ g of total protein (1 ml of cell lysate)], immunofluorescence (starting dilution 1:50, dilution range 1:50-1:500) and flow cytometry (1 μ g per 1×10^6 cells).

Suitable for use as control antibody for HLA-E siRNA (h): sc-62470, HLA-E shRNA Plasmid (h): sc-62470-SH and HLA-E shRNA (h) Lentiviral Particles: sc-62470-V.

Molecular Weight of HLA-E: 40 kDa.

Positive Controls: BJAB whole cell lysate: sc-2207, CCRF-CEM cell lysate: sc-2225 or Jurkat whole cell lysate: sc-2204.

DATA



HLA-E (4D12): sc-517455. Western blot analysis of HLA-E expression in BJAB (A), CCRF-CEM (B) and Jurkat (C) whole cell lysates. Detection reagent used: m-IgG κ BP-HRP: sc-516102.

STORAGE

Store at 4° C, ****DO NOT FREEZE****. Stable for one year from the date of shipment. Non-hazardous. No MSDS required.

RESEARCH USE

For research use only, not for use in diagnostic procedures.

PROTOCOLS

See our web site at www.scbt.com for detailed protocols and support products.